



FOR NEW EQUIPMENT SALES, CALL
800.958.2555
TO SPEAK WITH AN ALTEC REPRESENTATIVE
or visit us online at altec.com

 **Altec**
TELESCOPIC ARTICULATING
AERIAL DEVICE

Courtesy of Machine.Market

AT37GW

FEATURES

- Telescopic Articulating Aerial Device
- Altec ISO-Grip® Control System
- Track-Driven Carrier with Retractable Tracks to 34 in
- Handheld Pendant Ground Drive Controls
- Insulating, ANSI Category C
- Platform Leveling Control at Lower Controls
- 180° Platform Rotator
- Hydraulic Tool Outlet at Platform
- 1,000 lb (453.6 kg) Cargo Deck Capacity
- Drive/Outrigger and Aerial Device Selector Switch
- Outrigger Boom Interlock System
- Outrigger Controls with Motion Alarms

OPTIONS

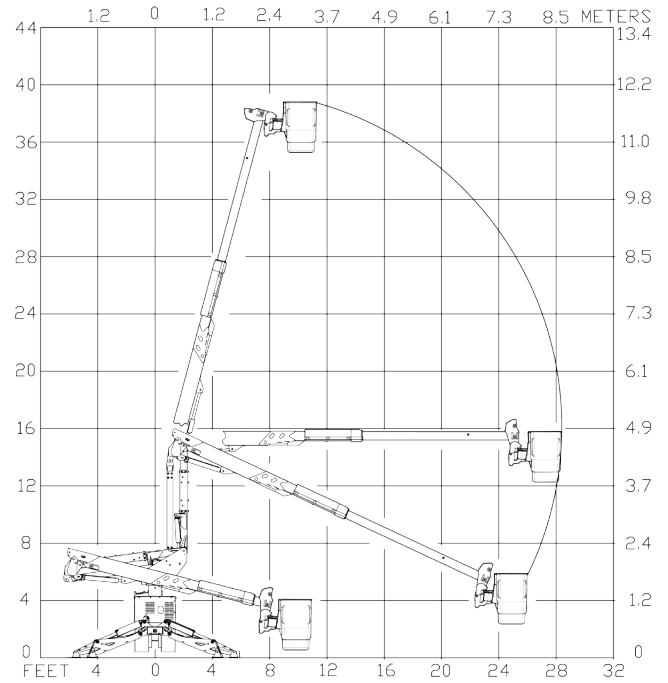
- Platform Cover
- Trailer



Recommended safety equipment, available through Altec Supply, include a platform liner, fall protection system, wheel chocks and outrigger pads.

SPECIFICATIONS	Ground to Bottom of Platform	35.3 ft (10.8 m)
	Working Height*	40.3 ft (12.3 m)
	Maximum Reach from Centerline of Rotation	28.4 ft (8.7 m)
	Platform Capacity	400 lb (181.4 kg)
	Articulating Arm Articulation	-7 to 90°
	Upper Boom Articulation	-25 to 75°
	Upper Boom Telescopic Extension	116 in (2,946.4 mm)
	Stowed Travel Height*	7.9 ft (2.4 m)
	Boom Isolation Gap	
	Minimum (When Fully Retracted)	8 in (203.2 mm)
	Maximum (When Fully Extended)	35 in (889 mm)
	Articulating Arm Isolation Gap	12 in (305 mm)
TRAILER SPECIFICATIONS		
Minimum GVWR	14,000 lb (6,350.3 kg)	
Weight of Trailer	4,500 lb (2,041.1 kg)	
Maximum Track Extension Width	46.8 in (1,188.7 mm)	
Minimum Track Retraction Width	34 in (863.6 mm)	
Track Length	78 in (1,981.2 mm)	
Maximum Drive Slope	15° Front to Back 10° Side to Side	
Weight of Machine (Including Aerial Device and Tracked Carrier)	7,600 lb (3,447.3 kg)	
*Based on a Track Trailer in Compliance with ANSI A92.2:2001 Paragraph 6.2.2.3		

REACH DIAGRAM



RADIAL OUTRIGGERS



RETRACTS TO 34 INCHES



WALK-BEHIND REMOTE CONTROL



For more complete information on Altec products and services, visit us on the web at www.altec.com. Material and specifications are subject to change without notice. Featured units in photos may include optional features. Please contact an Altec representative for all available options. Altec® and the Altec logo are registered trademarks of Altec Inc. in the United States and various other countries and may not be used without permission.
© 2015 Altec Inc. All Rights Reserved. AIOSAT37GW-0315-v1



NEW EQUIPMENT SALES | 800.958.2555 | SALES@ALTEC.COM | ALTEC.COM

Courtesy of MachineMarket