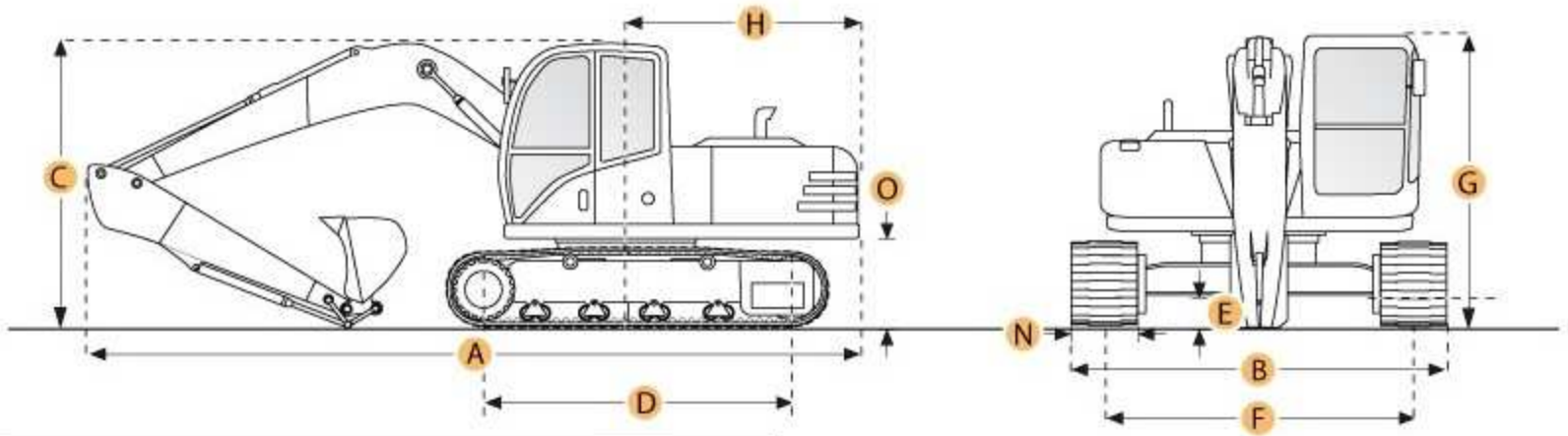


CATERPILLAR 322BL



Selected Dimensions

Boom/Stick Option		
A. SHIPPING LENGTH OF UNIT	32.7 ft in	9960 mm
C. SHIPPING HEIGHT OF UNIT	10.2 ft in	3120 mm
I. MAX CUTTING HEIGHT	31.8 ft in	9680 mm
J. MAX LOADING HEIGHT	22.1 ft in	6730 mm
K. MAX REACH ALONG GROUND	32.8 ft in	10010 mm
L. MAX VERTICAL WALL DIGGING DEPTH	18.7 ft in	5700 mm
M. MAX DIGGING DEPTH	22 ft in	6710 mm

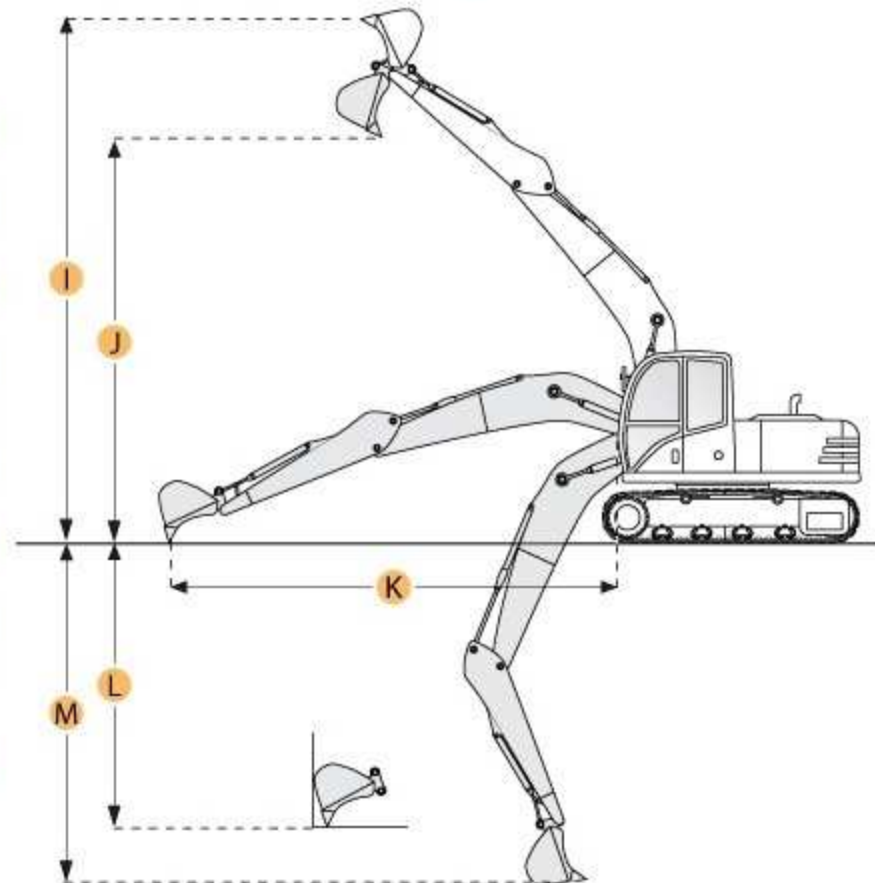
Dimensions		
B. WIDTH TO OUTSIDE OF TRACKS	10.5 ft in	3190 mm
D. LENGTH OF TRACK ON GROUND	12.6 ft in	3830 mm
E. GROUND CLEARANCE	1.5 ft in	470 mm
G. HEIGHT TO TOP OF CAB	9.8 ft in	2980 mm
H. TAIL SWING RADIUS	9.5 ft in	2900 mm
O. COUNTERWEIGHT CLEARANCE	3.6 ft in	1090 mm

Undercarriage		
F. TRACK GAUGE	8.5 ft in	2590 mm
N. SHOE SIZE	31.5 in	800 mm

Specification

Engine		
MAKE	Caterpillar	
MODEL	3116TA	
GROSS POWER	161 hp	120.1 kw
NET POWER	153 hp	114.1 kw
POWER MEASURED @	1950 rpm	
DISPLACEMENT	403 cu in	6.6 L
ASPIRATION	Turbocharged and Aftercooled	
NUMBER OF CYLINDERS	6	

Operational		
OPERATING WEIGHT	50177.2 lb	22760 kg
FUEL CAPACITY	89.8 gal	340 L



COOLING SYSTEM FLUID CAPACITY	8.3 gal	31.5 L
HYDRAULIC SYSTEM FLUID CAPACITY	70 gal	265 L
ENGINE OIL CAPACITY	5.7 gal	21.5 L
SWING DRIVE FLUID CAPACITY	2.1 gal	8 L
OPERATING VOLTAGE	24 V	
ALTERNATOR SUPPLIED AMPERAGE	55 amps	
HYDRAULIC SYSTEM RELIEF VALVE PRESSURE	4980 psi	34335.9 kPa
HYDRAULIC PUMP FLOW CAPACITY	108.3 gal/min	410 L/min

Swing Mechanism

SWING TORQUE	51850 lb ft	70299.2 Nm
--------------	-------------	------------

Undercarriage

SHOE SIZE	31.5 in	800 mm
MAX TRAVEL SPEED	3.4 mph	5.5 km/h
DRAWBAR PULL	43612.9 lb	194 kN
TRACK GAUGE	8.5 ft in	2590 mm

Buckets

REFERENCE BUCKET CAPACITY	1.4 yd ³	1.1 m ³
MINIMUM BUCKET CAPACITY	1.3 yd ³	0.99 m ³
MAXIMUM BUCKET CAPACITY	2 yd ³	1.5 m ³

Boom/Stick Option (HEX) 1

BOOM/STICK OPTION (HEX) 1	Boom 19'4" (5900mm) / Stick 9'8" (2950mm)	
SHIPPING HEIGHT OF UNIT	10.2 ft in	3120 mm
SHIPPING LENGTH OF UNIT	32.7 ft in	9960 mm
MAX DIGGING DEPTH	22 ft in	6710 mm
MAX REACH ALONG GROUND	32.8 ft in	10010 mm
MAX CUTTING HEIGHT	31.8 ft in	9680 mm
MAX LOADING HEIGHT	22.1 ft in	6730 mm
MAX VERTICAL WALL DIGGING DEPTH	18.7 ft in	5700 mm

Boom/Stick Option (HEX) 2

BOOM/STICK OPTION (HEX) 2	Boom 19'4" (5900mm) / Stick 8'2" (2500mm)	
SHIPPING HEIGHT OF UNIT	10.8 ft in	3280 mm
SHIPPING LENGTH OF UNIT	32.8 ft in	10010 mm
MAX DIGGING DEPTH	20.5 ft in	6260 mm
MAX REACH ALONG GROUND	31.5 ft in	9590 mm
MAX CUTTING HEIGHT	31.1 ft in	9480 mm
MAX LOADING HEIGHT	21.5 ft in	6540 mm
MAX VERTICAL WALL DIGGING DEPTH	17.3 ft in	5260 mm

Boom/Stick Option (HEX) 3

BOOM/STICK OPTION (HEX) 3	Mass Boom 17'5" (5300mm) / Stick 8'2" (2500mm)	
SHIPPING HEIGHT OF UNIT	11.3 ft in	3450 mm
SHIPPING LENGTH OF UNIT	30.8 ft in	9400 mm
MAX DIGGING DEPTH	19.4 ft in	5910 mm
MAX REACH ALONG GROUND	29.9 ft in	9120 mm
MAX CUTTING HEIGHT	30.1 ft in	9160 mm
MAX LOADING HEIGHT	19.6 ft in	5980 mm
MAX VERTICAL WALL DIGGING DEPTH	17 ft in	5180 mm

Dimensions

WIDTH TO OUTSIDE OF TRACKS	10.5 ft in	3190 mm
HEIGHT TO TOP OF CAB	9.8 ft in	2980 mm

GROUND CLEARANCE	1.5 ft in	470 mm
COUNTERWEIGHT CLEARANCE	3.6 ft in	1090 mm
TAIL SWING RADIUS	9.5 ft in	2900 mm
LENGTH OF TRACK ON GROUND	12.6 ft in	3830 mm

Courtesy of Machine.Market