

- **Net Horsepower**  
238 kW (320 hp)
- **Max Lifting Capacity**  
100 000 kg (220,460 lb)
- **Operating Weight**  
61 100 kg (134,700 lb)



# SB-85 PIPELAYER

- High stability and low ground pressure
- Easy operation of hydraulically controlled boom
- Two different hook speeds for raising and lowering
- Modular power train components



## ENGINE

Make and Model .....	Cummins KT-19C
Type .....	4-cycle diesel, turbocharged, direct start, direct injection
Gross Horsepower @ 2100 rpm .....	261kW (350 hp)
* Flywheel power @ 2100 rpm .....	238 kW (320 hp)
Maximum torque @ 1500 rpm .....	1530 Nm (1128 lb ft)
Number of cylinders .....	6
Displacement .....	18.8 l (1150 in <sup>3</sup> )
Bore and Stroke .....	159 x 159 mm (6.25" x 6.25")
Lubrication, full flow filtering w/bypass .....	full pressure
Number of main bearings .....	7
Electrical system .....	24V
Air Cleaner .....	two stage, exhaust aspirated, dry type with service indicator

\* Output of standard engine complete with fan, air cleaner, muffler, alternator, water pump, lubricating oil pump and fuel pump per SAE J1349

## TRANSMISSION & TORQUE CONVERTER

Modular countershaft type power shift, hydraulically controlled and actuated.  
Single stage 409 mm (16") torque converter with a 2.7:1 stall ratio drives to transmission through a double universal joint.

## TRAVEL SPEEDS

High-low power shift in each transmission gear.

Gear	Range	Forward		Reverse	
		km/h	(mph)	km/h	(mph)
1st	low	2.8	(1.7)	3.4	(2.1)
	high	3.7	(2.3)	4.5	(2.8)
2nd	low	4.8	(2.9)	5.8	(3.6)
	high	5.8	(3.6)	7.0	(4.3)
3rd	low	7.1	(4.3)	8.6	(5.3)
	high	9.3	(5.7)	11.3	(7.0)

## STEERING & BRAKING

Unique two speed geared steering module provides gradual turns while maintaining full power to both tracks plus conventional clutchbrake performance for tight or pivot turns. This type of steering system offers superior traction in all types of operations and terrain. Coupled to 3-speed transmission provides 6 speeds forward and 6 reverse. Complete steering module is removable as an assembly for superior serviceability.  
Hand levers conveniently located on the left, hydraulically actuate oil cooled, adjustment free, steering planetary gears, multiple disc clutches, and brakes in one control for each track.  
Pull back single lever to detent position for gradual turn or both levers for speed reduction. Pull lever slightly further to disengage steering clutches, fully back to brake.  
Single foot pedal applies both brakes for parking or downhill speed control. Brakes are spring applied and hydraulically released.

## FINAL DRIVES

Double-reduction module provides desired gear reduction at the sprocket. Three-piece bolt-on sprocket distributes wear evenly over track bushings letting every tooth ride free one-half of the time to reduce wear. Final drives or sprockets are replaceable without removing track frames.

## TRACK FRAME

Non-oscillating type, all-welded heavy box section track frame	
Track rollers each side .....	8
Top idlers each side .....	2
Front idlers (drum type) each side .....	1
All rollers and idlers .....	lifespan lubricated

## TRACKS

The split master link reduces chain removal and installation time.	
Track shoe width, standard .....	864 mm (34")
Track shoes each side .....	45
Ground contact area with std. shoes .....	6.74 m <sup>2</sup> (10,447 in <sup>2</sup> )
Ground pressure .....	88.8 kPa (12.9 psi)
Grouser height .....	76 mm (3")
Track adjustment .....	full hydraulic
Ground clearance .....	660 mm (26")
Fixed drawbar - height from ground to centerline of 95 mm (3.75") clevis .....	719 mm (28.3")

## REFILL CAPACITIES

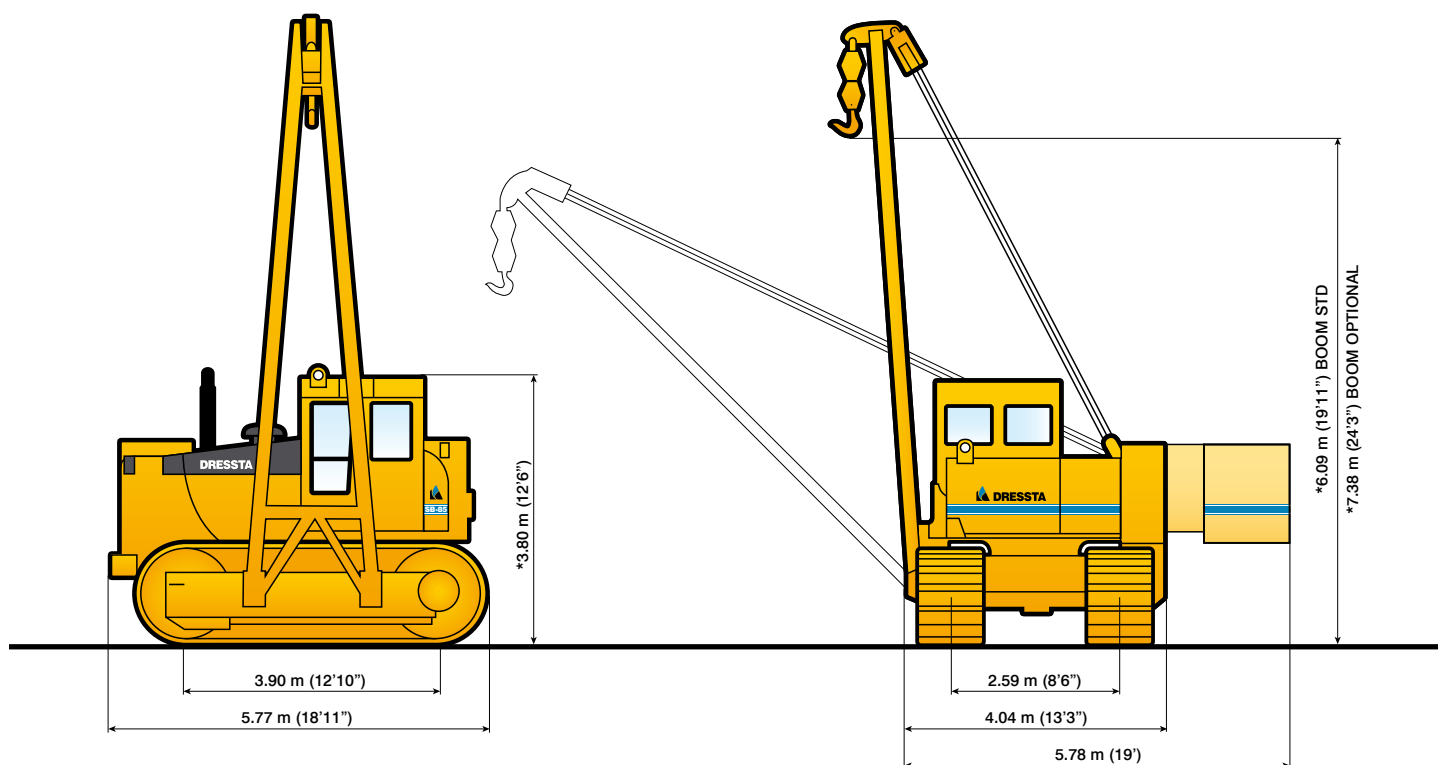
	Liter	(US gal)
Fuel tank	627	(166)
Cooling system	92	(24)
Engine lubrication, incl. filters	58	(15)
Transmission system	300	(79)
Sprocket drive, each side	77	(20)
Hydraulic system	280	(74)

## OPERATING WEIGHT

Includes std. equipment and full fuel..... 61100 kg (134,700 lb)

## OVERALL DIMENSIONS WITH EQUIPMENT

Width, counterweights retracted .....	4.04 m (13'3")
Width, counterweights extended .....	5.78 m (19')
Overall length .....	5.77 m (18'11")
Height without boom (with cab) .....	3.80 m (12'6")
Track on ground .....	3.90 m (12'10")



\* DIMENSIONS INCLUDE 76 mm (3") GROUSER HEIGHT

## PIPELAYING EQUIPMENT

### COUNTERWEIGHTS

Adjustable, hydraulically controlled:

Counterweight frames .....	2710 kg	(5,974 lb)
4 blocks at 2400 kg (5,291 lb) each .....	9600 kg	(21,164 lb)
Total weight extendable .....	12310 kg	(27,138 lb)

### LIVE POWER

Continuous power to pipelayer winches, independent of torque converter.

### WINCH TRANSMISSION

Sliding gear, 2 speeds for raising, 2 for lowering.

### DRUMS

Operated independently or simultaneously.

	HOOK	BOOM
Drum diameter .....	338 mm (13.3")	338 mm (13.3")
Flange diameter .....	690 mm (27.16")	690 mm (27.16")
Length (inside flanges) .....	426 mm (16.8")	196 mm (7.7")
Max capacity with		
22.2 mm (7/8") cable .....	106 m (347'9")	74 m (242'9")

### HOOK SPEEDS (bare drum)

Raise: .....	m/min	(ft/min)
– First .....	4.75	(15.6)
– Second .....	9.5	(31.2)

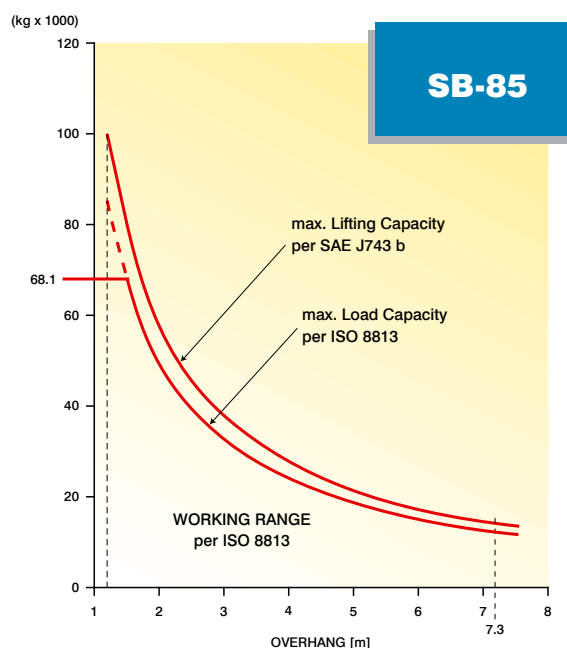
Lower:

– First .....	4.5	(14.8)
– Second .....	9.0	(29.5)

### BOOM

Welded box section. Length of standard boom - 7.3 m (24') and optional boom – 8.5 m (27'10").

### LIFTING CAPACITY



SPECIFIED EQUIPMENT  
 – 22.2 mm (7/8") WIRE ROPE, 35652 kg (78,598 lb) MINIMUM BREAKING STRENGTH  
 – 9 PART LOAD LINE  
 – 5 PART BOOM LINE  
 – COUNTERWEIGHTS EXTENDED – 9600 kg (21,164 lb)



## STANDARD EQUIPMENT

- |   |   |
|---|---|
| <ul style="list-style-type: none"> <li>• Air cleaner, dry type w/exhaust aspirated primary and safety elements and service indicator</li> <li>• Alternator, 50 A</li> <li>• Antifreeze, -37°C (-34°F)</li> <li>• Batteries, (4) 12 V, 1630 CCA, maintenance free</li> <li>• Boom kickout, uppermost position</li> <li>• Boom welded type, box-section structure, length 7 315 mm (24')</li> <li>• Brakes, wet, multiple disc, closed type, spring applied, hydraulically released</li> <li>• Bumper front</li> <li>• Cab, isolation mounted, full vision with safety glasses and lockable door, dome light, door window wiper, emergency exit window and heater/pressurizer/defroster</li> <li>• Coolant filter conditioner</li> <li>• Counterweights, adjustable, hydraulically controlled 4-blocks and 2-counterweight frames</li> <li>• Decelerator, foot operated</li> <li>• Drawbar, fixed</li> <li>• Emergency hook lowering system</li> <li>• Exhaust pipe extension</li> <li>• Fan, reversible</li> <li>• Filters, oil, full flow and by-pass with replaceable elements</li> <li>• Filters, transmission, hydraulic and fuel system</li> <li>• Fuel strainer</li> <li>• Guards: crankcase, fan, radiator, transmission</li> <li>• Heat exchanger, engine oil</li> </ul> | <ul style="list-style-type: none"> <li>• Horn electric</li> <li>• Hourmeter, electric</li> <li>• Instrument panel light</li> <li>• Instruments, in resilient mounted panel</li> <li>• Light, boom</li> <li>• Lights w/guards, 2 front on tractor, 1 rear</li> <li>• Load capacity indicator, mechanical, on boom frame</li> <li>• Muffler</li> <li>• Radiator, isolation mounted</li> <li>• Seat, suspension type with arm rests</li> <li>• Starting, 24 V</li> <li>• Steering, planetary type, 2 speed</li> <li>• Tool box</li> <li>• Torque converter, single stage</li> <li>• Track adjusters, hydraulic</li> <li>• Track chain guides, integral</li> <li>• Track chain sealed with split master link, 45 links</li> <li>• Track frames, 8 roller, 2.59 m (102") gauge, non-oscillating type, lifespan lubricated rollers and idlers</li> <li>• Track shoes 864 mm (34"), severe service</li> <li>• Transmission, power shift, 3 speeds forward, 3 reverse combined with 2 speed steering provides, 6 speeds forward, 6 reverse</li> <li>• Water separator, fuel system</li> <li>• Winches, two separate, for hook and boom, with hydrostatic drive system and planetary transmission</li> </ul> |
|---|---|

## OPTIONAL ATTACHMENTS

- |   |  |
|---|--|
| <ul style="list-style-type: none"> <li>• Air conditioner (roof mounted) and heater/pressurizer/defroster (cab side wall mounted)</li> <li>• Alarm, back-up</li> <li>• Batteries (6), 12 V, 2445 CCA, cold start</li> <li>• Ether start</li> <li>• Fuel pump, manually operated, fuel tank mounted</li> <li>• Flash beacon light</li> <li>• Guards: <ul style="list-style-type: none"> <li>– Track roller</li> <li>– Track roller, segmented</li> <li>– Sprocket dirt/rock deflector</li> </ul> </li> <li>• Light, winch</li> <li>• Lights, 2 rear, cab mounted</li> </ul> | <ul style="list-style-type: none"> <li>• Lubricated track system</li> <li>• Mirror, interior and sunshield</li> <li>• Mirrors (2), exterior, RH &amp; LH</li> <li>• Tools in metal box</li> <li>• Track shoes 1016 mm (40") clipped corner, severe service</li> <li>• Working attachments: <ul style="list-style-type: none"> <li>– boom, welded type, box section structure, length 8500 mm (27'10")</li> <li>– boom, length 7315 mm (24') for use with load limit indicator</li> <li>– boom, length 8500 mm (27'10") for use with load limit indicator</li> <li>– load limit indicator, Tensotronic</li> <li>– hook pulley block limit switch, uppermost position</li> <li>– load capacity indicator, mechanical, for 8500 mm (27'10") boom</li> </ul> </li> <li>• Vandalism protection</li> </ul> |
|---|--|

Specifications subject to change without notice. Illustrations and pictures may include optional equipment and may not include all standard equipment.

# DRESSTA Co.Ltd.

Kwiatkowskiego 1, 37-450 Stalowa Wola, P O L A N D  
tel.: +48 15 813 5252, 15 813 4556 fax: +48 15 813 4763  
sales@dressta.com.pl www.dressta.com.pl