



Dynapac CP2700


Pneumatic rollers






Technical data


 Masses	
Operating mass (incl. ROPS)	27,300 lbs
Mass with max. ballast	59,500 lbs
Mass with wet sand ballast	45,195 lbs


 Propulsion	
Speed low	4.4 mph
Speed high	0.0 mph

 Compaction	
Rolling width	91 in
Tire overlap	1.7 in
Wheel loads, without ballast	2,650 lbs
Wheel loads, with wet sand ballast	4,200 lbs
Wheel loads, with max. ballast	6,600 lbs
Tire pressure, min	36 psi
Tire pressure, max	123 psi
Tire type (smooth)	13/80 R20
Water spray system, type	Pressurized
Water spray system, tank capacity	110 gal
Water spray system, spray nozzle	one per tire
Ballast volume	106 cu. ft.

 Engine	
Manufacturer/Model	Cummins QSB 4.5 (Tier 3)
Rated power, SAE J1995	110 hp @ 2,200 rpm
Type	Water cooled turbo diesel
Fuel tank capacity	55 gal
Electrical system	24V

 Engine	
Manufacturer/Model	Cummins QSB 3.8 (Tier 4F)
Rated power, SAE J1995	97 kW (130 hp) @ 2,200 rpm

 Engine	
Manufacturer/Model	Cummins QSB 4.5 (Tier 3)
Rated power, SAE J1995	93 kW (124 hp) @ 2,200 rpm

 Hydraulic system	
Driving	Axial piston pump with variable displacement. Axial piston motors (2) with variable displacement.
Steering	Axial piston pump with variable displacement.
Service brake	2 multidisc brakes on rear wheels activated by pedal.
Parking/Emergency brake	Failsafe multidisc brakes in both gear boxes.

Find us locally at www.atlascopco.com

We reserve the right to change specifications without notice. Photos and illustrations do not always show standard versions of machines. The above information is a general description only, all informations are supplied without liability.

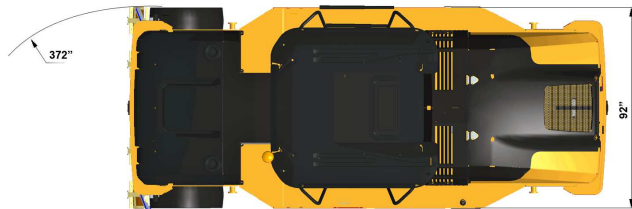
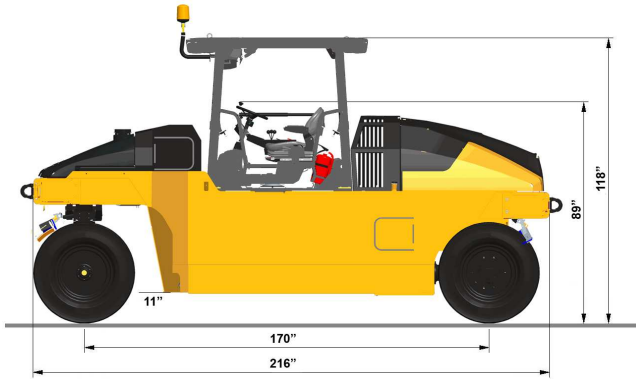
rce_cp2700_us-20160613.143748.pdf 2016-06-13 14:37

Dynapac CP2700

Pneumatic rollers

Atlas Copco

Technical data



Service and repair kits

Type of kit	P/N	Serial Number/Additional info
50h service kit	4812155998	CP2700 Teir 3 s/n 10000502x0B003898-
250h service kit	4812101896	CP2700 Teir 3 s/n 10000502x0B003898-
500h service kit	4700945806, 4812101897	CP2700 Teir 3 s/n 10000502x0B003898-
750h service kit	4812101896	CP2700 Teir 3 s/n 10000502x0B003898-
1000h service kit	4812155999, 4812101916	CP2700 Teir 3 s/n 10000502x0B003898-
50h service kit	4812316684	CP2700 Teir 4i s/n 10000507x0B003949-
250h service kit	4812316685, 4812316686	CP2700 Teir 4i s/n 10000507x0B003949-
500h service kit	4812316687, 4812316688	CP2700 Teir 4i s/n 10000507x0B003949-
750h service kit	4812316685, 4812316686	CP2700 Teir 4i s/n 10000507x0B003949-
1000h service kit	4812316689, 4812316690	CP2700 Teir 4i s/n 10000507x0B003949-
Sprinkler kit	4812155698	
Scraper kit	4812155696	
Air on the run kit	4812155751	Front
Air on the run kit	4812155751	Rear
Working lights kit	470PP81096	

Find us locally at www.atlascopco.com

We reserve the right to change specifications without notice. Photos and illustrations do not always show standard versions of machines. The above information is a general description only, all informations are supplied without liability.

rce_cp2700_us-20160613.143748.pdf 2016-06-13 14:37