

E485 ***EVOLUTION***



Net flywheel power **250 kW - 340 hp**

Maximum operating weight	E485LCH	E485BEH
	50 250 kg	49 600 kg

Bucket capacity	E485LCH	E485BEH
	1.66-2.26 m³	1.66-2.60 m³



EVOLVING TECHNOLOGY

Courtesy of Machine.Market

E485 ***EVOLUTION***

- ***Evolution in technology***
- ***Evolution in productivity and consumption***
- ***Evolution in comfort and safety***
- ***Evolution in accessibility and service***
- ***Evolution in equipment and versatility***
- ***Evolution in reliability***



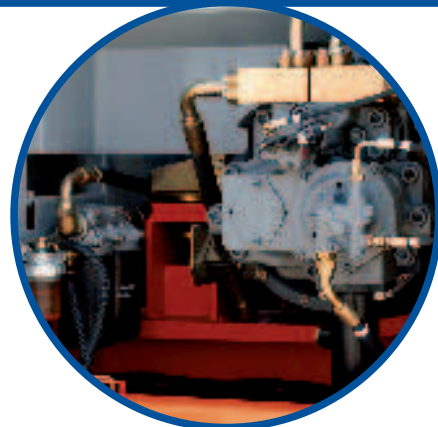
PRODUCTIVITY:

The perfect match between the top engine performances and the great delivery of hydraulic pumps lands to a productivity which is 8% higher than in the previous model.



New last generation ISUZU engine

The new engine has an adequate displacement to supply a high torque same time featuring low fuel consumption. Its conformity to the European Rules 97/68/CE TIER 2, highly respecting the environment, does not effect the exceptional power output.



Hydraulic system

The new hydraulic system S.H.S. (Smart Hydraulic System) features an electronic management of pumps delivery and of main control valve spools actuation. Precisely and promptly following manipulators strokes, the onboard computer grants an outstanding controllability and simultaneous movements.



HD track chains and severe service dippersticks

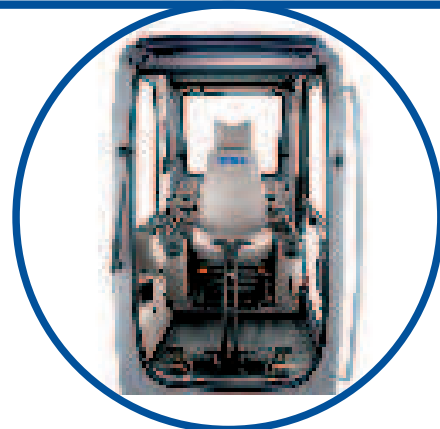
Higher class trackchains with 6% increased link pitch if compared to the previous model, grant an outstanding strength and durability on all kind of rough terrain. Moreover, special external reinforcement and wear plates are standard welded on dippersticks, thus providing maximum integrity even when digging tough grounds or handling rocks.



Automatic centralised lubrication

A standard automatic centralised lubrication system which can be programmed in advance in terms of timing, frequency and quantity of grease released, grants the necessary lubrication of all specific points.

This means shorter maintenance time, no risk of abnormal wear and greater operator comfort.



"High Space" cab

Perfect visibility in all directions thanks to the wide glass surface and transparent cab roof. The extremely low noise level thanks to elasto-viscous connection to the upperstructure and a deep study of the best ergonomic solutions make this cab really innovative and comfortable. It offers also an optimised safety package (optional) designed, tested and homologated to be fitted with a FOPS canopy along with a front windshield protective grid.

Specifications



Tier-2 emissioned engine

Net flywheel power (ISO 14396).....250 kW/340 hp
Rated rpm1950
Make and modelISUZU AA-6SD1XQY
TypeDiesel, 4 strokes, direct injection, turbocharged
Total Displacement9.8 l
Number of cylinders6
Bore x stroke120 x 145 mm
Maximum torque at 1600 rpm1275 Nm

Remote location engine oil filter and water/fuel separator for easy replacement

Engine rpm electronic control with knob selector.

Automatic idling return selector with "Auto-idling" controls in neutral
Start at -15° outside temperature as standard equipment (-25° as an optional device)

The engine conforms to 97/68/CE STAGE 2



Electrical system

Operating voltage24 V
Alternator50 Amp
Starter motor5.5 kW
Standard maintenance-free batteries2
Capacity160 Ah



Hydraulic system

New S.H.S. (Smart Hydraulic System) for outstanding controllability and complete simultaneous movements.

New generation **A.I. (Artificial Intelligence)** on-board computer

A.P.S. (Automatic Priority System device)

Hydraulic valve, rod opening and pump delivery computerised control according to manipulator travel

E.S.S.C. (Engine Speed Sensing Control) device for total use of installed hydraulic power

High definition E.T.U. (Easy to Use) multifunction monitor incorporating:

- Maintenance programme
- Self Diagnosis System
- Operating Data Storage

Mechatronic Work Selector (M.W.S.):

- **Standard Mode (W)** - Standard operating mode
- **Heavy/Mechatronic Mode (H/M)** - Maximum hydraulic power for top productivity. In this function, the machine "learns" the work cycle it operates after 2 cycles and automatically selects maximum efficiency/speed and operating precision with the A.P.S. Automatic Priority System device.
- **Attachments Mode (A)** - Possible selection and storage of supplementary implement delivery from the cab

Continuous untimed insertion **Power Boost Device**. Continuous insertion of the device, when selected, ensures maximum digging performance and productivity in the toughest applications.

Double delivery device supplied standard

Piping pressure release push button: to facilitate tooling change without oil loss from piping

Hammer/two-directional pincer system

Main pumps:

two variable delivery pumps with electronic delivery adjustment

With controls on neutral, the pumps automatically move to displacement position "0".

Maximum delivery2 x 370 l/min

Piloting circuit gear type pump

Maximum delivery28 l/min

Maximum operating pressure:

Equipment31.4 MPa
Power Boost34.3 MPa
Travel34.3 MPa
Swing25.0 MPa
Hydraulic cylindersdouble effect
- Lift (2) - Bore x Stroke170 x 1589 mm
- Penetration (1) - Bore x Stroke190 x 1970 mm
- Bucket (1) - Bore x Stroke170 x 1300 mm



Transmission

Typetwo-speed hydrostatic
Motorsaxial pistons double displacement type,
collapsible into track carriage

Brakesoil bath disc type, automatically applied
and hydraulically released

Final drivesoil bath, planetary reduction

Maximum slope70% (35°) continuous

Travel speeds:

slow0 to 3.5 km/h

high0 to 5.6 km/h

"Automatic DownShift" device: with selector on "fast" in case of need for more traction force adjusts travel motors to maximum displacement.



Swing

Swing motorstwo, axial piston type

Swing brakeoil bath disc type, automatically applied
and hydraulically released

Final driveoil bath, planetary reduction

Circlegrease bath type

Swing speed9.0 rpm



Cab and controls

Transparent opening roof.

Standard automatic conditioning

Controlspiloted

Two cross travel levers control all equipment movements and superstructure swing.

Two pedals with hand levers control all track movements, counter-rotation included.

A safety lever neutralises the piloting circuit completely.



Undercarriage

Typevariable gauge

X-design undercarriage

Sealed bushing reinforced track HD chain

Chain link pitch229 mm

E485LCH-E485BEH

Track rollers (each side) 9

Carrier rollers (each side) 3

Length of track on ground (mm) 4 400

Minimum gauge (mm) 2390

Maximum gauge (mm) 2 890

Shoes available (mm) 600-700

800-900



Capacities

Engine litres

Lube oil38

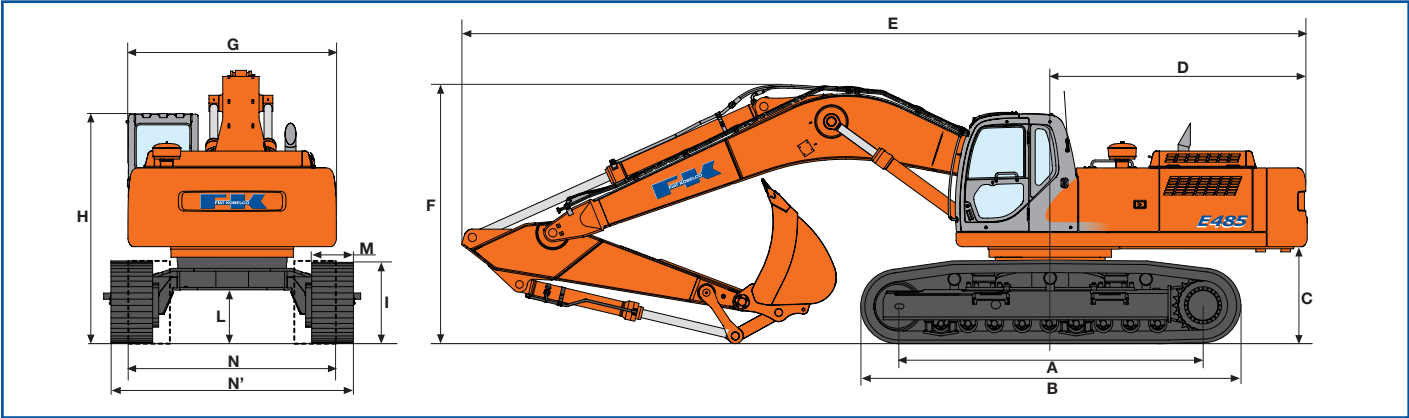
Antifreeze mixture39

Fuel663

Hydraulic tank300

E485LCH

Dimensions (mm) - Operating weights

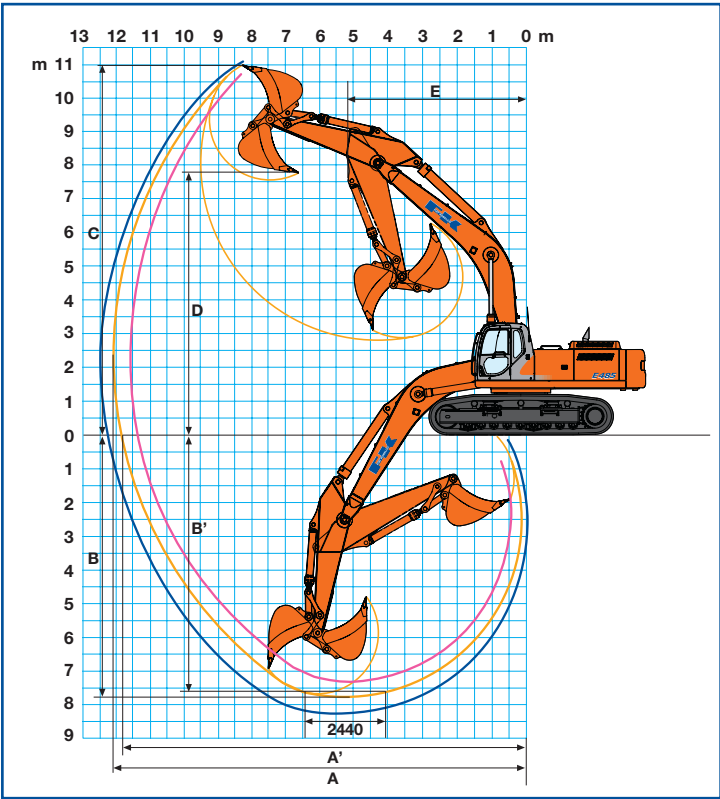


Version	A	B	C	D	E	F	G	H	I	L
					(1) 12175	(1) 3730				
E485LCH	4400	5470	1394	3342	(2) 12110	(2) 3590	3000	3310	1203	775
					(3) 12120	(3) 3610				

Dipperstick: (1) 2 900 mm - (3) 3 450 - (4) 4 040 mm

		E485LCH			
M - Shoe width	mm	600	700	800	900
N - Minimum width	mm	2990	3090	3190	3290
N' - Maximum width	mm	3490	3590	3690	3790
Operating weight	kg	48600	49150	49700	50250
Specific ground pressure	bar	0.90	0.78	0.70	0.62

Digging performance



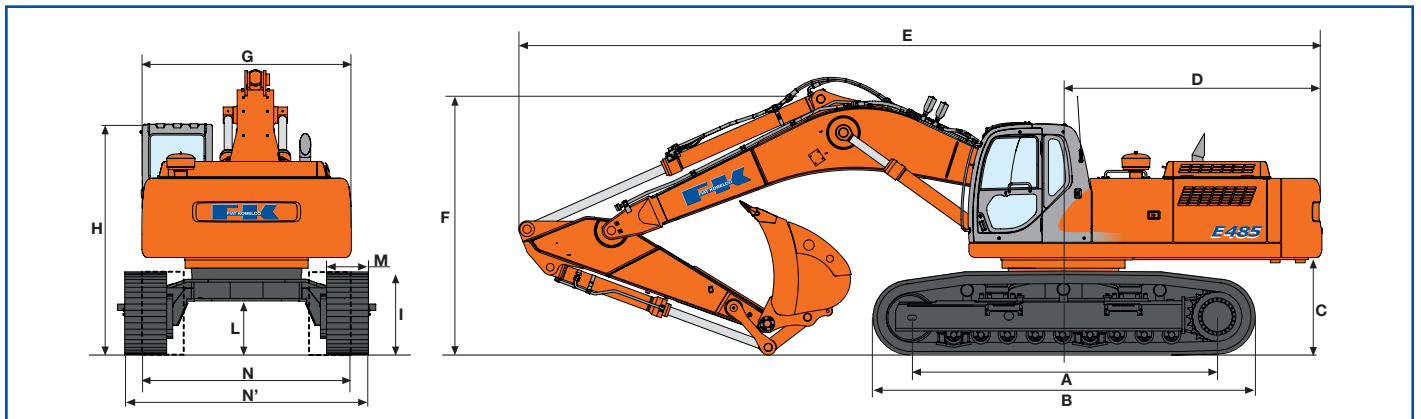
Dipperstick	mm	2900	3450	4040
A	mm	11553	12079	12577
A'	mm	11308	11845	12353
B	mm	7226	7770	8366
B'	mm	7061	7626	8237
C	mm	10707	10969	11032
D	mm	7531	7767	7884
E	mm	5237	5173	5187

Breakout force:				
Bucket	daN	24800	24800	24800
Dipperstick	daN	22800	18000	15200

With "Power Boost" on:				
Bucket	daN	27000	27000	27000
Dipperstick	daN	25200	19900	16900

E485BEH

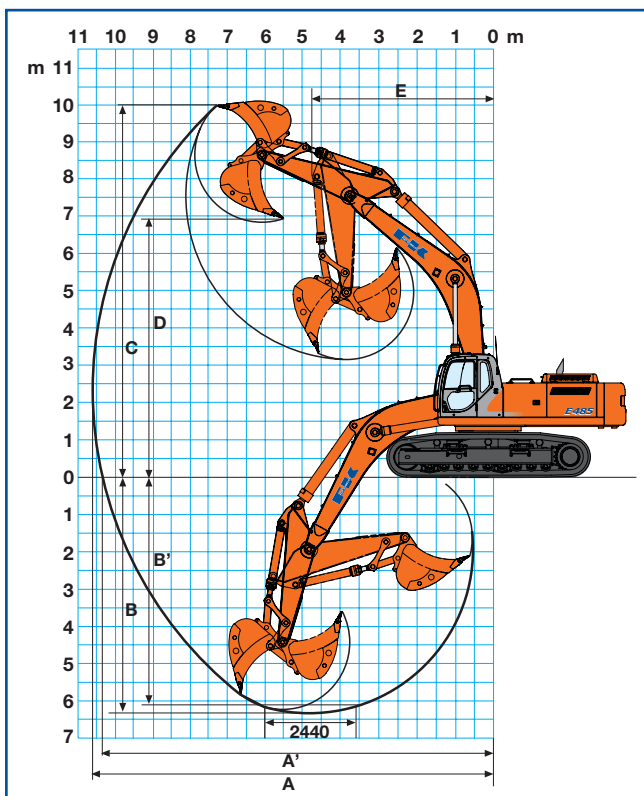
Dimensions (mm) - Operating weights



Version	A	B	C	D	E	F	G	H	I	L
E485BEH	4400	5470	1394	3700	11500	3980	3000	3310	1203	775

		E485BEH			
M - Shoe width	mm	600	700	800	900
N - Minimum width	mm	2990	3090	3190	3290
N' - Maximum width	mm	3490	3590	3690	3790
Operating weight	kg	47950	48500	49050	49600
Specific ground pressure	bar	0.89	0.77	0.68	0.61

Digging performance



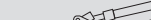
Dipperstick	mm	2600
A	mm	10633
A'	mm	10366
B	mm	6343
B'	mm	6171
C	mm	9997
D	mm	6856
E	mm	4721

Breakout force:		
Bucket	daN	24800
Dipperstick	daN	26500

With "Power Boost" on:		
Bucket	daN	27000
Dipperstick	daN	28100

E485 Evolution - Lifting capacity

Values are expressed in tonnes

	Radius of load																
	1.5 m		3.0 m		4.5 m		6.0 m		7.5 m		9.0 m		10.5 m		At max reach		Reach m
	Front	Side	Front	Side	Front	Side	Front	Side	Front	Side	Front	Side	Front	Side	Front	Side	

E485LCH - Dipperstick 2 900 mm

Height																	
+7.5 m															8.6 *	8.6 *	8.5
+6.0 m									9.2 *	9.2 *	8.7 *	8.4			8.7 *	7.9	9.3
+4.5 m					16.0 *	16.0 *	12.1 *	12.1 *	10.2 *	10.2 *	9.2 *	8.2			8.9 *	7.1	9.8
+3.0 m					20.4 *	20.4 *	14.3 *	14.3 *	11.4 *	10.4	9.8 *	7.9			9.2 *	6.7	10.0
+1.5 m					21.3 *	21.1	16.1 *	13.8	12.5 *	10.0	10.4 *	7.7			9.5 *	6.5	10.0
0 m					23.7 *	20.7	17.1 *	13.4	13.2 *	9.7	10.9 *	7.5			10.0 *	6.7	9.7
-1.5 m			17.3 *	17.3 *	23.4 *	20.7	17.3 *	13.3	13.4 *	9.6	10.9 *	7.4			10.5 *	7.2	9.2
-3.0 m			26.0 *	26.0 *	21.9 *	20.9	16.6 *	13.3	12.9 *	9.6					11.1 *	8.2	8.4
-4.5 m			25.9 *	25.9 *	19.2 *	19.2 *	14.7 *	13.6							11.7 *	10.4	7.2
-6.0 m															13.7 *	13.7 *	5.4

E485LCH - Dipperstick 3 450 mm

Height																	
+7.5 m											7.8 *	7.8 *			7.8 *	7.8 *	9.2
+6.0 m											8.0 *	8.0 *			7.9 *	7.1 *	9.9
+4.5 m									9.5 *	9.5 *	8.6 *	8.2			8.2 *	6.4	10.3
+3.0 m					18.7 *	18.7 *	13.4 *	13.4 *	10.7 *	10.5	9.3 *	7.9	8.4 *	6.1	8.4 *	6.1	10.5
+1.5 m					22.0 *	21.3	15.3 *	13.9	11.9 *	10.0	10.0 *	7.6	8.8 *	6.0	8.8 *	5.9	10.5
0 m			9.7 *	9.7 *	23.5 *	20.7	16.6 *	13.3	12.8 *	9.6	10.5 *	7.4			9.2 *	6.0	10.3
-1.5 m	11.7 *	11.7 *	15.8 *	15.8 *	23.5 *	20.5	17.1 *	12.6	13.3 *	9.4	10.8 *	7.3			9.7 *	6.4	9.8
-3.0 m	17.5 *	17.5 *	22.6 *	22.6 *	22.5 *	20.6	16.8 *	13.1	13.0 *	9.4	10.3	7.3			10.2 *	7.2	9.1
-4.5 m			28.4 *	28.4 *	20.3 *	20.3 *	15.4 *	13.3	11.8 *	9.6					10.8 *	8.8	8.0
-6.0 m					16.2 *	16.2 *	12.1 *	12.1 *							11.2 *	11.2 *	6.3

E485LCH - Dipperstick 4 040 mm

Height																	
+7.5 m											6.9 *	6.9 *			6.7 *	6.7 *	9.8
+6.0 m											7.3 *	7.3 *			6.8 *	6.5	10.4
+4.5 m									8.7 *	8.7 *	7.9 *	7.9 *	7.5 *	6.3	7.0 *	5.9	10.8
+3.0 m			13.6 *	13.6 *	16.8 *	16.8 *	12.3 *	12.3 *	10.0 *	10.0 *	8.7 *	7.9	7.9 *	6.1	7.4 *	5.6	11.0
+1.5 m			7.9 *	7.9 *	20.7 *	20.7 *	14.4 *	14.1 *	11.3 *	10.1	9.4 *	7.6	8.4 *	5.9	8.0 *	5.4	11.0
0 m	6.0 *	6.0 *	10.7 *	10.7 *	22.8 *	20.8	16.0 *	13.4	12.4 *	9.6	10.0 *	7.3	8.7 *	5.8	8.5 *	5.5	10.8
-1.5 m	10.7 *	10.7 *	15.1 *	15.1 *	23.5 *	20.4	16.8 *	13.1	13.0 *	9.4	10.6 *	7.2			8.9 *	5.8	10.3
-3.0 m	15.5 *	15.5 *	20.6 *	20.6 *	23.0 *	20.4	16.8 *	12.9	13.1 *	9.3	10.5 *	7.1			9.5 *	6.4	9.7
-4.5 m	21.0 *	21.0 *	27.6 *	27.6 *	21.3 *	20.6	15.9 *	13.0	12.3 *	9.4					10.1 *	7.7 *	8.6
-6.0 m			25.4 *	25.4 *	18.1 *	18.1 *	13.6 *	13.4							10.8 *	10.4	7.2

E485BEH - Dipperstick 2 600 mm

Height																	
+7.5 m															10.3 *	10.3 *	7.4
+6.0 m									10.3 *	10.3 *					10.2 *	9.3	8.2
+4.5 m					11.4 *	11.4 *	11.3 *	11.3 *	10.8 *	10.7					10.3 *	8.2	8.7
+3.0 m					12.1 *	12.1 *	12.1 *	12.1 *	11.5 *	10.0					10.6 *	7.6	9.0
+1.5 m					13.3 *	13.3 *	12.1 *	11.7	12.3 *	9.5					10.9 *	7.5	9.0
0 m					15.2 *	12.4	14.3 *	10.9	13.0 *	9.3					11.3 *	7.8	8.7
-1.5 m			18.8 *	14.9	17.1 *	13.0	15.3 *	11.3	13.1 *	9.5					11.7 *	8.6	8.1
-3.0 m			20.8 *	20.8 *	17.9 *	15.9	15.1 *	12.8							12.0 *	10.4	7.2
-4.5 m					15.6 *	15.6 *									11.7 *	11.7 *	5.8

As per **ISO 10567** with excavator equipped with bucket. The indicated load is no more than 87% of hydraulic system lift capacity or 75% of static tipping load. Value marked with an asterisk are limited by the hydraulic system.

Standard equipment

2600 Dipperstick (BEH version)
 2900 Dipperstick (LCH version)
 Anti-leakage main spool hydraulic control valve
 Auto-Idling
 Cell phone holder with charge socket
 Centralised automatic lubrication
 Cyclone prefilter
 Double delivery
 Double travel speed with Automatic DownShift
 Engine rpm electronic control
 Fuel transfer electrical pump
 Grease bath circle
 Hammer/pincer system predisposition
 Hammer piping on booms
 HD sealed type tracks chains and 229 mm pitch link
 Horn
 Hydraulic piping and connections with front seals
 Hydraulic travel end cylinders

Hydraulically suspended cab with transparent opening roof and automatic air conditioning system
 Maintenance-free batteries
 Mechanically suspended heated operator seat
 Mechatronic Mode Selector
 Multi-function electronic instrument panel
 Pedal or lever travel control
 Power Boost
 Radio set
 Shoes: 600 mm
 Smart Hydraulic System
 Swing and travel motors with automatic disc brakes
 New TIER 2 emission diesel engine
 Tool kit
 Two-speed intermittent windshield wiper
 Variable gauge undercarriage
 Version LCH or BEH

Optional equipment

3450 mm Dipperstick (LCH version)
 4040 mm Dipperstick (LCH version)
 Antidrop valves on dipper stick cylinder
 Antidrop valves on lift cylinders
 Compressed air suspended heated seat
 Fops protection on cab roof and front window grid
 Fuel transfer electrical pump
 Grab bucket/grass cutter bucket low delivery supplementary hydraulic function predisposition

Heavy duty, rock and special buckets with bucket/boom setting device
 Hydraulic quick coupler predisposition
 Mechanical quick coupler
 Northern country equipment
 Overhead load handling
 Piping on booms for supplementary low delivery function
 Shoes LCH/BEH: 700 mm - 800 mm - 900 mm
 Supplementary lights on cab

Note: standard and optional equipment may vary by country. Consult your FIAT KOBELCO dealer for specific details.

Buckets

SAE Capacity	CECE heaped capacity	Width	Weight
1.66 m ³	1.48 m ³	1320 mm	1231 kg
1.83 m ³	1.63 m ³	1420 mm	1328 kg
2.05 m ³	1.82 m ³	1550 mm	1409 kg
2.26 m ³	2.00 m ³	1670 mm	1468 kg
2.60 m ³ *	2.31 m ³ *	1740 mm*	1850 kg*

* Only for E485BEH

AT YOUR OWN DEALERSHIP

The information contained in this brochure is intended to be a general nature only. The FIAT KOBELCO company may at any time and from time to time, for technical or other necessary reasons, modify any of the details or specifications of the product described in this brochure. Illustrations do not necessarily show products in standard conditions. The dimensions, weights and capacities shown herein, as well as any conversion data used, are approximate only and are subject to variations within normal manufacturing techniques.

Published by FIAT KOBELCO CONSTRUCTION MACHINERY S.p.A. - <http://www.fiatkobelco.com>
 Printed in Italy - LEADER Firenze - Cod. 60087 - INB - 07/04



EVOLVING TECHNOLOGY



FIAT KOBELCO IS A BRAND OF CNH.
 CNH: THE TOTAL SOLUTIONS CHOICE FOR YOUR SPECIFIC BUSINESS NEEDS.

Courtesy of Machine.Market