



PRODUCTS

2016/17



A factory full of innovations



Where the heart of compaction beats

In the heart of Europe, surrounded by the wonderful Upper Palatinate fenland, lies Tirschenreuth. There, in 1878, Franz and Anton Hamm founded the machine factory "Maschinenfabrik Gebr. HAMM" firm. Since the beginning of the 20th century, our company has concentrated on the manufacture of rollers for road building. From that time on, HAMM has been the driving force and trendsetter in the industry. Many technologies and solutions that have become the standard in the compaction sector were developed by HAMM. Today, HAMM is the world market leader in the road roller segment.

At the parent plant in Tirschenreuth, a team of highly motivated engineers and technicians work to develop the rollers. The extensive machine programme encompasses various tandem rollers, a wide choice of compactors as well as pneumatic tyre rollers. Modern solutions with which to optimise the compaction process round off the product portfolio. They enable HAMM to offer practical, tailor-made solutions for all compaction tasks involved in road building and earth work.

All HAMM rollers as well as the drums are produced at the Tirschenreuth factory. State-of-the-art production processes allow every machine to be finished individually to customer specification. Extensive quality testing accompanies the production process.

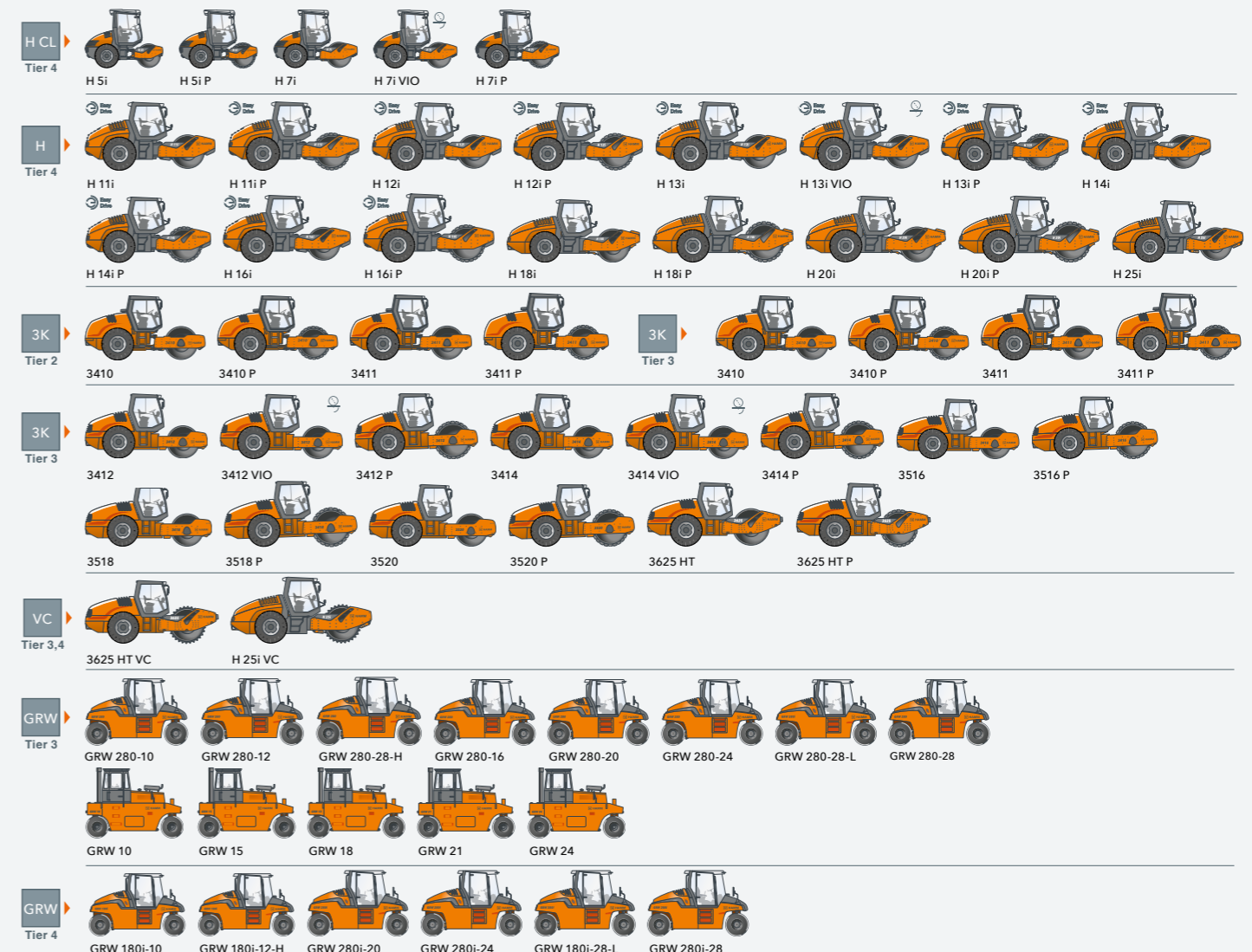
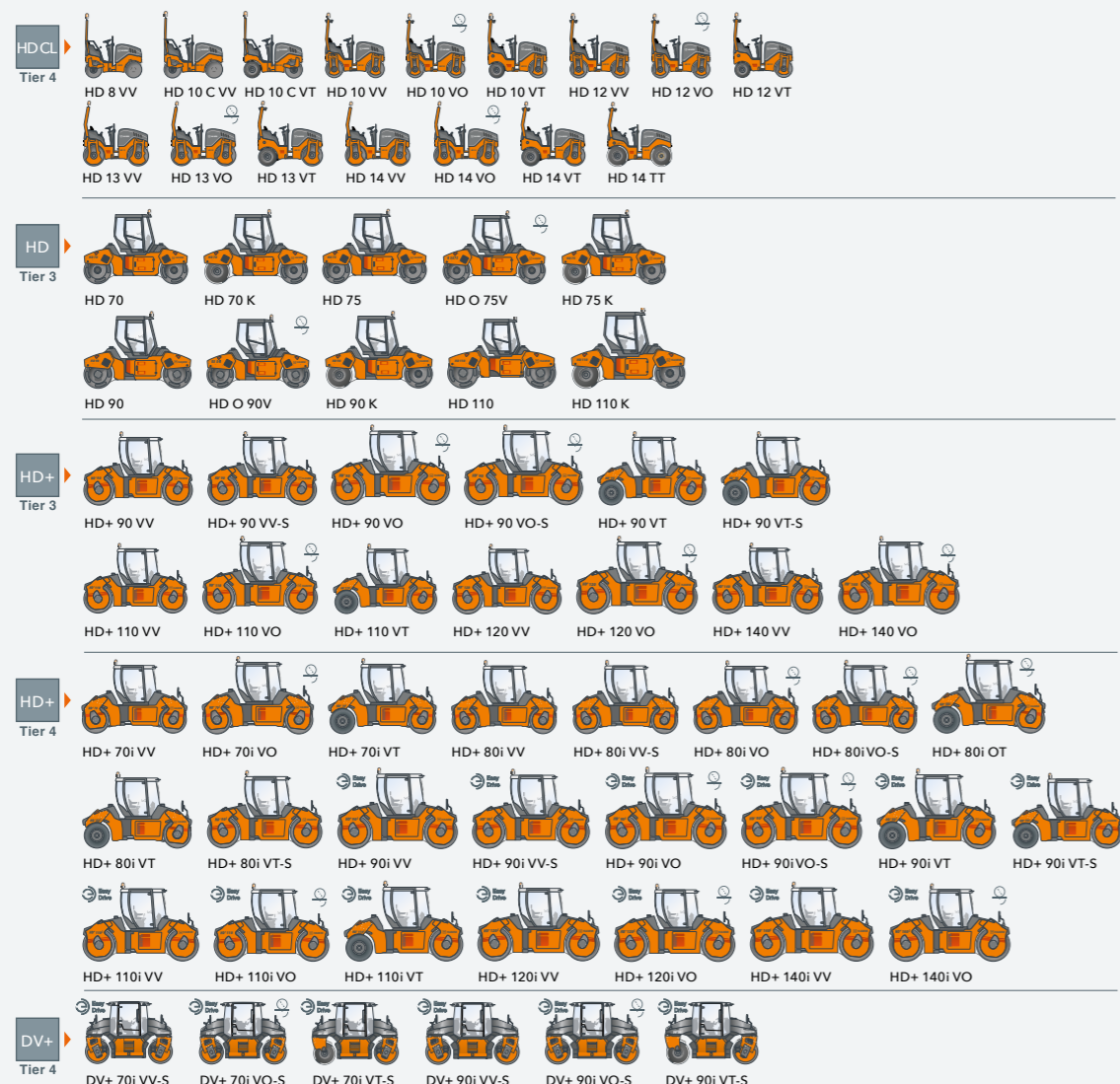


- 1** >> **ADMINISTRATIVE BUILDING**
Among other things, the administrative building houses the sales and development centre in which the engineers and technicians develop new solutions.
- 2** >> **CAR PARK**
A geothermal plant extracts underground energy from below the car park. This energy is used to heat or cool the office buildings in a particularly environment-friendly manner.
- 3** >> **ASSEMBLY HALLS**
This is where new HAMM rollers are produced day in, day out in an ultra-modern assembly line.
- 4** >> **DRUM FACTORY**
In the drum factory, the drums for all HAMM rollers are produced.

- 5** >> **LONG-TERM TEST FACILITY**
Endurance test for all pre-production machines: before series production can begin, new HAMM rollers are subjected to rigorous long-term testing over many days on the test facility with a steep slope, moguls and vibration section.
- 6** >> **CTT (CENTRE FOR TRAINING AND TECHNOLOGY)**
Roller drivers, workshop and service technicians relish a visit to the modern CTT where trainings are conducted on a regular basis.
- 7** >> **LOGISTICS CENTRE**
In the logistics centre, the despatch team prepares the rollers for delivery to customers.
- 8** >> **TESTING BENCH**
Every single HAMM roller undergoes extensive testing in the testing bench before delivery.

Product programme

State-of-the-art technology for road building and earth work



The HAMM product programme encompasses not only the machines listed here, but also the HCQ measurement and documentation system and various attachments, as well as many options. You will find details of them in the corresponding brochures.

Explanations:

- V:** Vibrating drum
- O:** Oscillation drum
- VIO:** Vibration and oscillation in one drum
- P:** Padfoot drum
- S:** Split vibrating drum
- C:** Clear Side
- T:** Set of tyres
- VC:** Crusher drum
- i:** intelligent emission control
- Oscillation
- Easy Drive

The agile all-rounders

The wasp-waist rollers



HD COMPACTLINE



VISIBILITY

The wasp waist and longitudinally mounted engine provide an excellent view of the drum edges, machine and surrounding construction site.



EASY TRANSPORT, EASY LOADING AND UNLOADING

Central lifting point and many lashing points for fast and safe loading/unloading.



COMPACT DIMENSIONS

High-quality compaction, even in cramped conditions, thanks to compact dimensions.



INTELLIGENT WATER SYSTEM

Dependable water supply thanks to triple filtration; additional activation via foot switch. Easy complete draining.



LARGE ROLLER DRUM DIAMETERS

Roller drums with large diameters actively reduce tearing and overlapping and promote high-quality compaction.

Top-quality compact rollers

The articulated compact rollers in the HD CompactLine, with operating weights between 1.4 and 4.5 t, are real all-rounders for asphalt construction, earth work and landscape gardening. Their operation is extremely easy and calls for no special language skills. Moreover, the wasp-waist rollers impress on account of their optimum visibility and outstanding driving and handling characteristics attributable primarily to the 3-point articulation.

With more than 15 models and drum widths from 0.80 to 1.38 m, the HD CompactLine covers the entire spectrum of compact rollers with vibrating, oscillation and combination rollers. In addition, there are numerous options such as chip spreaders or a cabin for the larger models, as well as various lighting options.

HD CompactLine	Basic data			Drums / variants *1			Equipment and options				
	Weight class (t)	Drum width (mm)	Engine power (kW)	Working width (mm)	VV	VO	VT	Clear-Side*2	Track offset	ROPS cabin	Chip spreader
Machines in accordance with EPA Tier 4 exhaust emission standard											
HD 8	1,5	800	14,8	856	•			•			
HD 10 C*2	1,5	1000	14,8	1056	•		•	•			
HD 10	2,5	1000	22,9	1050	•	•	•		•		•
HD 12	2,5	1200	22,9	1250	•	•	•		•		•
HD 13	4,0	1300	34,6	1350	•	•	•		•	•	•
HD 14	4,5	1380	34,6	1430	•	•	•		•	•	•

*1 VV: Vibration (front) - Vibration (rear)
VO: Vibration (front) - Oscillation (rear)
VT: Vibration (front) - Set of tyress (rear)

*2 C: Clear Side

First-class compaction

Uncompromisingly good



HD+



VISIBILITY

Safety and high compaction quality thanks to the outstanding overview of the machine and surrounding construction site from any sitting position.



OPERATION

Safe, intuitive operation thanks to clear operating elements marked in a language-neutral manner and an ergonomically optimised workspace.



HIGH COMPACTION POWER

With large drum diameters and widths, and with a working weight to match, the HD+ series rollers compact quickly and to a very high quality.



LARGE WATER TANKS

Even weight distribution on account of two large water tanks with interconnecting pipework.



3-POINT ARTICULATION

The special kinematics ensure even weight distribution, first-rate directional stability and outstanding driving stability.



Outstanding handling, high compaction power

The articulated tandem rollers in the HD+ series cover the range between 7 and 14 t with over 30 models. The XXL cabin or platform offers spacious and comfortable working conditions. From this workspace, drivers have an excellent overview of the drums, water sprinkling system and surrounding area.

With their exceptionally favourable weight distribution, the HD+ series rollers stand out in terms of handling and compaction characteristics. Whether straights, slopes, bends or roundabouts: these rollers quickly produce perfectly smooth surfaces. With easy edge-finishing in mind, HAMM has made the track offset extra large. And last but not least, the HD+ series rollers are equipped with large water and diesel tanks for long working days without refilling stops. This greatly boosts productivity.



HD+	Basic data				Drums / variants*						Equipment and options			
	Weight class (t)	Drum width (mm)	Engine power (kW)	Max. working width (mm)	VV	VV-S	VO	VO-S	VT	VT-S	OT	Easy Drive	Track offset	Chip spreader
Machines in accordance with EU Stage IIIB / EPA Tier 4 exhaust emission standards														
HD+ 70i	7	1500	55,4	1635	•		•		•				•	•
HD+ 80i	8	1680	55,4	1815	•	•	•	•	•	•	•		•	•
Machines in accordance with EU Stage IIIA / EPA Tier 3 exhaust emission standards														
HD+ 90	9	1680	100	1850	•		•		•				•	•
HD+ 110	11	1680	100	1850	•		•		•				•	•
HD+ 120	12	1980	100	2150	•		•						•	
HD+ 140	14	2140	100	2310	•		•						•	
Machines in accordance with EU Stage IV / EPA Tier 4 exhaust emission standards														
HD+ 90i	9	1680	85	1850	•	•	•	•	•	•			•	•
HD+ 110i	11	1680	85	1850	•		•		•				•	•
HD+ 120i	12	1980	115	2150	•		•						•	•
HD+ 140i	14	2140	115	2310	•		•						•	•

* VV: Vibration (front) - Vibration (rear)
VV-S: Vibration, split (front) - Vibration, split (rear)

VO-S: Vibration, split (front) - Oscillation (rear)
VT: Vibration (front) - Set of tyres (rear)

VT-S: Vibration, split (front) - Set of tyres (rear)
OT: Oscillation (front) - Set of tyres (rear)

Rollers with clear vision

Powerful, precise and productive



DV+



VISIBILITY

Safety and high compaction quality thanks to the outstanding overview of the machine and surrounding construction site from any sitting position.



EASY DRIVE

Safe, intuitive operation thanks to clear operating elements marked in a language-neutral manner and an ergonomically optimised workspace.



LONG WORKING INTERVALS

Maximum possible productivity thanks to generously dimensioned fuel and water tanks.



WATER SYSTEM

Even weight distribution on account of two large water tanks with interconnecting pipework. Fast, safe replenishment via central pressurised filling system.



STEERING

Precise steering in all situations thanks to pivot steering with large turning angles, large track offset and four steering modes.



The premium class for asphalt compaction

On the pivot-steered tandem rollers in the DV+ series, the Easy Drive operating concept ensures top-class ergonomics and ease of operation. From the fully glazed panoramic cabin with optimum visibility, the driver enjoys a good view of the drum edges, the edge pressing and cutting equipment and the construction site at all times. Additional viewing panels in the cabin floor also allow him an uninterrupted view of the drums or wheels.

Thanks to their pivot steering with very large track offset, the DV+ series rollers can be controlled very precisely in four different steering modes. In addition, the rollers are fitted with split vibrating drums as standard. Together with the uniform weight distribution and the automatic soft ramps for gentle acceleration and braking, they produce asphalt surfaces of impeccable smoothness - even in tight curves.

DV+	Basic data				Drums / variants *			Equipment and options		
	Weight class (t)	Drum width (mm)	Engine power (kW)	Max. working width (mm)	VV-S	VO-S	VT-S	Easy Drive	Electric adjustment of the seat-operating unit	Chip spreader
Machines in accordance with EU Stage IIIB / EPA Tier 4 exhaust emission standards										
DV+ 70i	7	1500	54,6	2770	•	•	•	•	•	•
Machines in accordance with EU Stage IIIB / EPA Tier 4i exhaust emission standards										
DV+ 90i	9	1680	74,4	3050	•	•	•	•	•	•

* VV-S: Vibration, split (front) - Vibration, split (rear)
 VO-S: Vibration, split (front) - Oscillation (rear)
 VT-S: Vibration, split (front) - Set of tyres (rear)



Innovation on 8 wheels

The most up-to-date pneumatic tyre roller



GRW

180 / 280



VISIBILITY
Excellent overview of the machine and construction site from every sitting position for safe, high-quality compaction.



LARGE DRIVER PLATFORM / CABIN
Large, well-appointed panoramic cabin or large operator's platform.



EASY SERVICING
Convenient access way to the operator's platform, can easily be folded down. Large footplates provide quick and easy access to the maintenance platform on the engine.



BALLASTING CONCEPT
Variable ballasting concept enables fast, optimum equipping of the machine.



SAFETY
Extremely powerful braking system for maximum safety.

Intelligent design for top-class compaction

The GRW 180/280 series rollers win many friends with their spacious operator's platform with panoramic cabin and outstanding visibility – mainly on account of the asymmetric frame with sight channels. Another feature is the language-neutral operation. It makes work easier for drivers and ensures safe operation.

In addition, the most up-to-date pneumatic tyre roller in the world features easy handling, optimum weight distribution, a special suspension system with levelling feature and modern power train to provide the very best conditions for high-quality compaction. One special detail is the intelligent ballasting concept which also makes the GRW 180/280 the most flexible pneumatic tyre roller on the market.

HD CompactLine	Basic data				Equipment and options		
	Weight class (t)	Working width (mm)	Engine power (kW)	Wheel load (t)	Track offset	ROPS cabin	Chip spreader
Machines in accordance with EPA Tier 4 exhaust emission standards							
HD 14 TT	4	1276	34,6	0,5	•	•	•

GRW 180/280	Basic data						Equipment and options			
	Weight class (t)	Working width (mm)	Engine power (kW)	Wheel load (t)	Operating weight min. (t)*1	Operating weight max. (t)*1	Front axle brake*2	Seat-operating unit moveable and rotatable	Tyre heating (incl. thermal aprons)	Thermal aprons
Machines in accordance with EU Stage IIIB / EPA Tier 4 exhaust emission standards										
GRW 180i-10	10	2084	55,4	1,1	8,785	14,365	•	•	•	•
GRW 180i-12H	12	2084	55,4	1,5	11,490	17,070	•	•	•	•
Machines in accordance with EU Stage IIIA / EPA Tier 3 exhaust emission standards										
GRW 280-10	10	2084	100	1,1	8,785	20,850	•	•	•	•
GRW 280-12	12	2084	100	1,4	8,785	20,850	•	•	•	•
GRW 280-12-H	12	2084	100	1,4	11,490	26,830	•	•	•	•
GRW 280-16	16	2084	100	1,9	11,720	23,785	•	•	•	•
GRW 280-20	20	2084	100	2,4	11,720	23,785	•	•	•	•
GRW 280-24	24	2084	100	2,9	12,165	24,230	•	•	•	•
GRW 280-28	28	2084	100	3,3	14,765	26,830	•	•	•	•
GRW 280-28-L	16	2084	100	1,9	14,765	26,830	•	•	•	•
Machines in accordance with EU Stage IIIB / EPA Tier 4i exhaust emission standards										
GRW 280i-20	10	2084	85	2,4	11,720	23,785	•	•	•	•
GRW 280i-24	24	2084	85	2,9	12,165	24,230	•	•	•	•
GRW 280i-28	28	2084	85	3,3	14,765	26,830	•	•	•	•
GRW 280i-28-L	16	2084	85	1,9	14,765	26,830	•	•	•	•

*1 based on the flexible ballast weights

*2 front axle brake compulsory on machines with an operating weight of 20 t or more

GRW

Road-building classics



Sound technology, robustly built

The robustly built GRW series pneumatic tyre rollers can be found on asphalt and earth work sites the whole world over. An even weight distribution on all tyres and good handling

characteristics make for reliable compaction results. The rollers can operate in all climatic zones and are extremely easy to operate and maintain.

GRW	Basic data				Equipment and options	
	Weight class (t)	Working width (mm)	Engine power (kW)	Wheel load (t)	Ballasting	Dual operator's platform
Machines in accordance with EU Stage IIIA / EPA Tier 3 exhaust emission standards						
GRW 10	10	1980	85	1,2	•	•
GRW 15	12	1980	85	1,5	•	•
GRW 18	15	1980	85	1,8	•	•
GRW 21	21	1980	85	2,7	•	•
GRW 24	24	1980	85	3,0		•



HD

The asphalt professionals

At home on every construction site

The HD series tandem rollers are highly valued professionals for asphalt construction the whole world over. From the ergonomically optimised operator's platform or spacious cabin, the driver has everything in view: the drum, the water sprinkling system and the surrounding construction site. High-quality compaction is assured thanks to the 3-point articulation, very small turning circle and large track offset.



HD	Basic data				Drums / variants *			Options	
	Weight class (t)	Drum width (mm)	Engine power (kW)	Max. working width (mm)	VV	VO	VT	Track offset	Edge pressing and cutting equipment
Machines in accordance with EU Stage IIIA / EPA Tier 3 exhaust emission standards									
HD 70	7	1500	55,4	1600	•		•	•	•
HD 75	8	1680	55,4	1780	•	•	•	•	•
HD 90	9	1680	100	1780	•	•	•	•	•
HD 110	11	1680	100	1780	•		•	•	•

* VV: Vibration, split (front) - Vibration, split (rear)
 VO: Vibration, split (front) - Oscillation (rear)
 VT: Vibration, split (front) - Set of tyres (rear)

Compact climbers

All-rounders for earth work



H COMPACTLINE



VISIBILITY
Safety and high compaction quality thanks to the outstanding overview of the machine and surrounding construction site from any sitting position.



SLOPE ANGLE AND CLIMBING ABILITY
Large slope angle and high-performance power train enable compaction on inclines of up to 60%.



ERGONOMIC WORKSPACE
Seat with multiple adjustment options and operating elements provide an ergonomic workspace for long, concentrated working.



COMPACT DIMENSIONS
Easy to manoeuvre, even on cramped construction sites, thanks to the compact design.



3-POINT ARTICULATION
Ensures optimum driving comfort and outstanding off-road mobility, absorbs shocks and enables safe manoeuvring, even on rough terrain.



Great compaction force - even for small sites

The exceptionally small compactors in the H CompactLine series offer an enormous climbing ability of up to 60% and maximum ground clearance, because the drive is provided via modern wheel motors. In addition, the 3-point articulation together with a very short wheel base ensures optimum driving and handling characteristics. The H CompactLine machines are also very short, making them predestined for cramped construction sites and compaction on uneven ground.

The operator's platform or cabin of the H CompactLine stand out for their exceptional visibility and ease of operation. In addition, drivers can very quickly adjust the ergonomically optimised workspace to their individual height and weight. This makes the H CompactLine models perfect for machine rental.

H CompactLine	Basic data			Drums / variants *			Equipment and options	
	Weight class (t)	Drum width (mm)	Engine power (kW)	V	VIO	P	Padfoot segments	Dozer blade
Machines in accordance with EU Stage IIIB / EPA Tier 4 exhaust emission standards								
H 5i	5	1370	54,6	•		•	•	•
H 7i	7	1680	54,6	•	•	•	•	•

* V: Vibration, split (front) - Vibration, split (rear)
VIO: Vibration, split (front) - Oscillation (rear)
P: Padfoot drum

Powerful heavyweights for earth work

Powerful and easy to operate



SLOPE ANGLE AND CLIMBING ABILITY

Large slope angle and high-performance power train enable compaction on inclines in excess of 60%.



VISIBILITY

Safety and high compaction quality thanks to the outstanding overview of the machine and surrounding construction site from any sitting position.



LARGE LINEAR LOAD

Extremely high linear loads - up to 78 kg/cm according to the model.



ERGONOMIC WORKSPACE

The Easy Drive operating concept and many convenience options make for an ergonomic workspace and long, concentrated working.



3-POINT ARTICULATION

Ensures optimum driving comfort and outstanding off-road mobility, absorbs shocks and enables safe manoeuvring, even on rough terrain.

Clean compaction force

The H series compactors are powerful professionals with great compaction force for today's earth work. Off-road, the compactors display their qualities to the full because, thanks to the 3-point articulation and the large slope angles at the front and rear, they are extremely manoeuvrable with optimum driving stability. Here, modern engines with future-proof technology ensure very low emissions.

The cabin or operator's platform is ergonomically optimised and the compactors are especially convenient and simple to operate thanks to Easy Drive. In addition, there is an excellent view of the drum and the working environment around the machine. Maintenance, too, is straightforward thanks to the wide-opening engine hood. This simplifies access to the filters and daily maintenance points.

H	Basic data			Drums / variants *			Equipment and options				
	Weight class (t)	Drum width (mm)	Engine power (kW)	V	VIO	P	Easy Drive	Vibration plate	Auxiliary heating	Dozer blade	Padfoot segments
Machines in accordance with EU Stage IIIB / EPA Tier 4i exhaust emission standards											
H 18i	18	2140	160	•		•			•	•	
H 20i	20	2140	160	•		•			•	•	
H 25i	25	2140	160	•					•		
Machines in accordance with EU Stage IV / EPA Tier 4 exhaust emission standards											
H 11i	11	2140	85	•		•	•		•	•	•
H 12i	12	2140	85	•		•	•		•	•	•
H 13i	13	2140	115	•	•	•	•	•	•	•	•
H 14i	14	2140	115	•		•	•	•	•	•	•
H 16i	16	2140	115	•		•	•	•	•	•	•

* VV: Vibration (front)
 VIO: Vibration (front) - Oscillation (rear)
 P: Padfoot drum

One roller for two jobs

Rock crushing and compacting



VC



ROBUST SPECIFICATION

Extremely robust design with heavy-duty components.



CLIMBING ABILITY

High-performance power train and Hammtronic electronic machine management system fitted as standard enable an exceptional climbing ability of up to 60%.



VC QUICK-CHANGE TOOLHOLDER SYSTEM

Fast tool-changing for high productivity. May also be easily carried out on-site.



HIGH POINT LOAD

High crushing force thanks to maximum point load of up to 50 t per cutting tool.



3-POINT ARTICULATION

Ensures outstanding traction and off-road mobility, absorbs shocks and enables safe manoeuvring, even on rough terrain.



Great versatility thanks to VC quick-change toolholder system

The VC compactors with crusher drum crush and compact rock in one operation. This significantly simplifies and speeds up many processes, ultimately saving time and resources.

The VC quick-change toolholder system is used to equip the drums with special cutting tools. With these tools, they can crush stone, loosen rock, grade or prepare routes in rocky terrain, maintain underground accessways and much more besides. A further option is to fit the tool holders with padfoot inserts, making the VC compactor ready to compact cohesive soils.

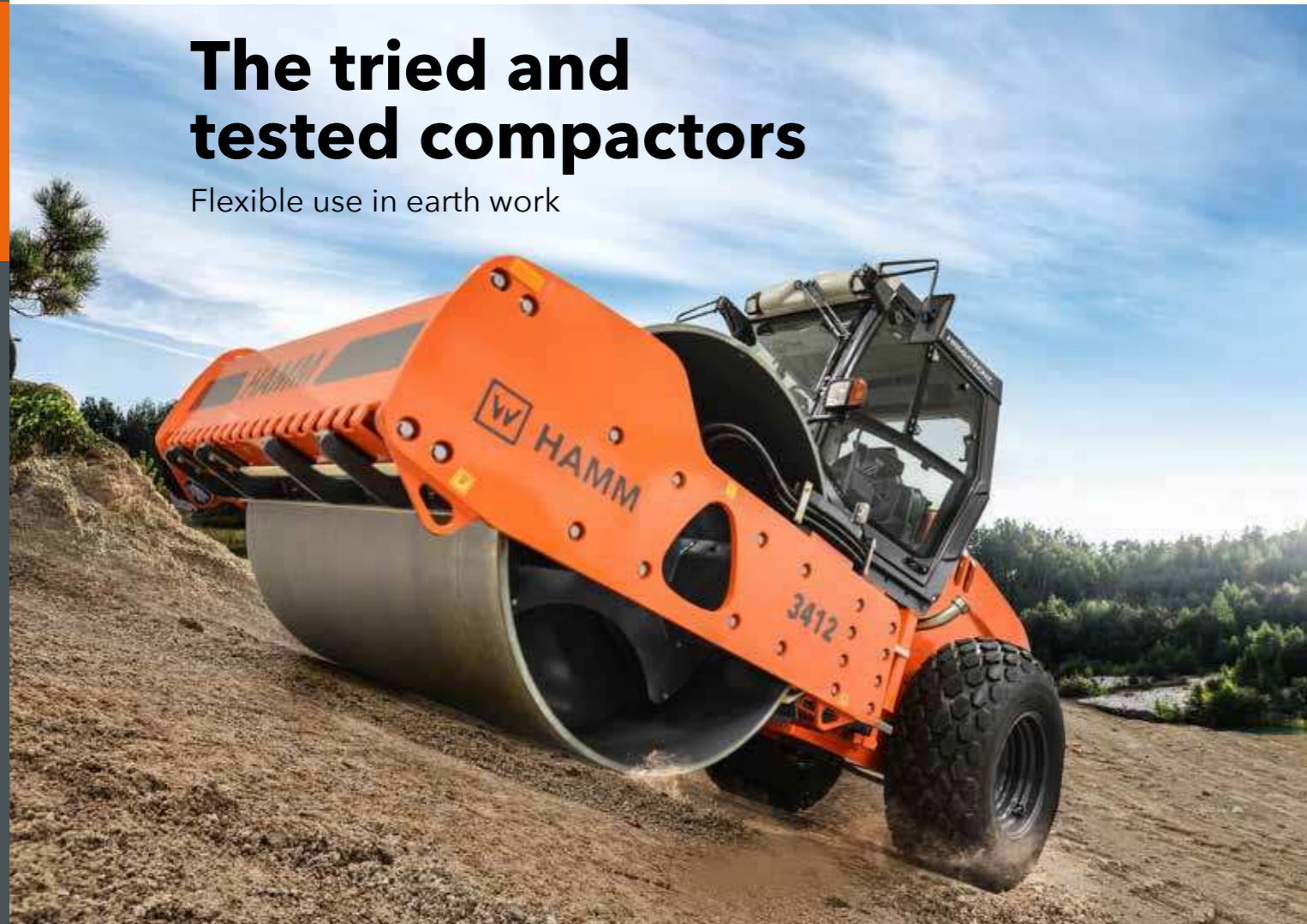
In order to master these tasks effortlessly, the VC compactors are equipped as heavy-duty machines, able to tackle slopes of up to 60%, crushing and compacting as they go, thanks to their high-performance power trains.



VC	Basic data			Equipment and options		
	Weight class (t)	Drum width (mm)	Engine power (kW)	Hammtronic	HAMM Compaction Meter	VC quick-change toolholder system
Machines in accordance with EU Stage IIIA / EPA Tier 3 exhaust emission standards						
3625 HT VC	25	2220	155	•	•	•
Machines in accordance with EU Stage IIIB / EPA Tier 4i exhaust emission standards						
H 25i VC	25	2220	160	•	•	•

The tried and tested compactors

Flexible use in earth work



3000



VISIBILITY
Safety and high compaction quality thanks to the outstanding overview of the machine and surrounding construction site from any sitting position.



ROBUST ENGINEERING
The intelligent design has proved its worth for many years all over the world and stands out for its robust execution.



3-POINT ARTICULATION
Ensures optimum driving comfort as well as outstanding traction and off-road mobility, absorbs shocks and enables safe manoeuvring, even on rough terrain.



CLIMBING ABILITY
The ingenious power train concept provides great climbing ability, especially on rollers equipped with Hammtronic.



SIMPLE MAINTENANCE AND SERVICING
All daily maintenance points are located in readily accessible positions on the same side of the machine - the most important prerequisite for fast checks.



Robust engineering for all markets

The compactors of series 3000 greet drivers with a spacious cabin or operator's platform and an inviting workspace. Operation of the compactors is extremely easy and the visibility they offer is also top-class.

While carrying out compaction work on-site, the compactors stand out for their high compaction power, small turning circle and low noise emissions. Their fuel consumption is also impressively low, especially on the models equipped with the Hammtronic machine management system. It is also responsible for a very good climbing ability of over 60%.

3000	Basic data			Drums / variants*			Equipment and options		
	Weight class (t)	Drum width (mm)	Engine power (kW)	V	VIO	P	Hammtronic	Padfoot segments	Dozer blade
Machines in accordance with EU Stage II / EPA Tier 2 exhaust emission standards									
3410	10	2140	98	•		•		•	
3411	11	2140	98	•		•		•	
Machines in accordance with EU Stage II / EPA Tier 3 exhaust emission standards									
3410	10	2140	100	•		•		•	•
3411	11	2140	100	•		•		•	•
3412	12	2140	100	•	•	•	•	•	•
3414	14	2140	100	•	•	•	•	•	•
3516	16	2140	155	•		•	•	•	•
3518	18	2220	155	•		•	•	•	•
3520	20	2220	155	•		•	•	•	•
3625	25	2220	155	•		•	•		

* VV: Vibration (front)
VIO: Vibration (front) - Oscillation (rear)
P: Padfoot drum

HAMM AG
Hamstrasse 1
D-95643 Tirschenreuth
Tel +49 9631/ 80-0
Fax +49 9631/ 80-111
www.hamm.eu



HAMM