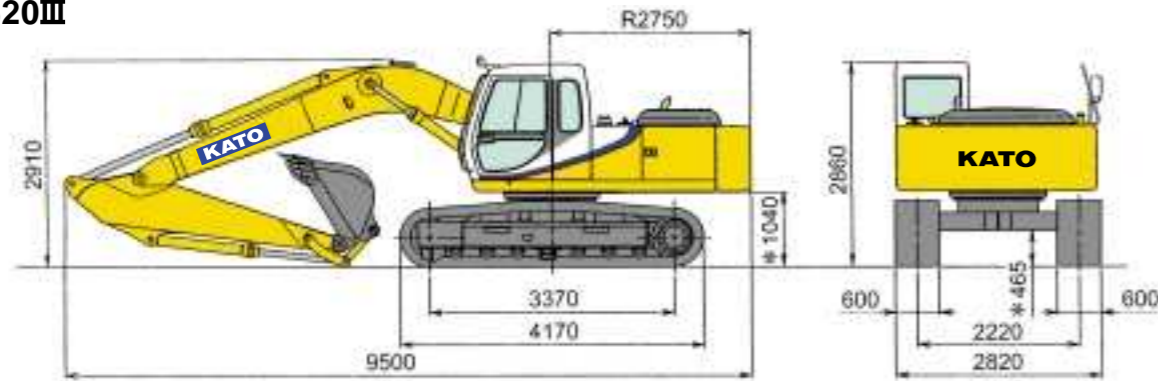


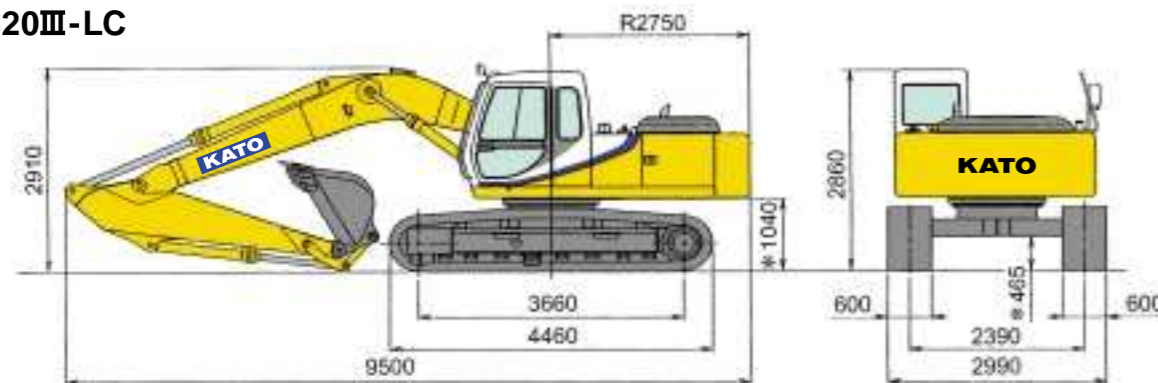
Dimensions

HD820Ⅲ

(Unit: mm)



HD820Ⅲ-LC



*Less grouser bar

Address inquiries to :

NOTE : Illustrations may include optional equipment. KATO products and specifications are subject to improvements and changes without notice.



KATO

QUALITY & EXPERIENCE
SINCE 1895

KATO WORKS CO.,LTD.

9-37, Higashi-ohi 1-chome, Shinagawa-ku, Tokyo 140-0011 Japan.

Tel. : Head Office Tokyo(03)3458-1111

Overseas Marketing Department Tokyo(03)3458-1115

Fax. : Tokyo(03)3458-1152

URL <http://www.kato-works.co.jp>

KATO

**SUPER
EXCEED®**

HD820Ⅱ HD820Ⅱ-LC

FULLY HYDRAULIC EXCAVATOR

Bucket capacity: 0.45m³ - 1.1m³(ISO)
Engine output: 110kW/2,050min⁻¹(ISO Net)
Operating weight: 19,500kg (HD820Ⅱ)/
20,300kg (HD820Ⅱ-LC)





.....Mitsubishi 6D34-TLE2A, 4 cycle intercooler turbo
charged diesel engine

.....6

.....104mm

.....

.....

.....

.....

.....

.....

.....

.....

.....

.....

.....

.....

.....

.....

.....

.....

.....

.....

.....

.....

.....



.....

.....

.....

.....

.....

.....

.....

.....

.....

.....

.....

.....



.....

.....

.....

.....

.....

.....

.....

.....

.....

.....

.....

.....

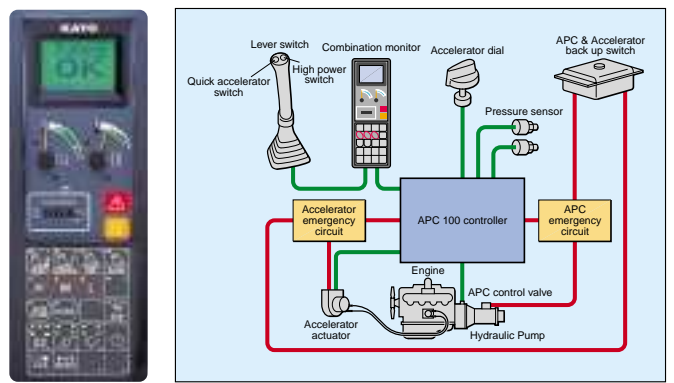
.....

.....

.....

.....

.....



.....

.....

.....

.....

.....

.....

.....

.....

.....

.....

.....

.....


.....

.....

.....

.....



[illegible]