

# 60Z<sup>IV</sup>-2



 **Kawasaki**

# THE VERSATILE **60Z<sup>IV</sup>-2**

## A COMPLETE SOLUTION

- Emissions-compliant 109 HP Cummins diesel
- 2.1 cu. yard bucket standard
- Accepts a wide assortment of attachments to handle many jobs
- High visibility ROPS cab optimizes productivity
- Ride Control option provides stable load handling
- Single hydraulic control for easy operation
- Powershift transmission with three forward and reverse speeds
- Four-wheeled sealed wet disc brakes for reliability and long service life
- Torque-proportioning differentials for improved traction and longer brake life
- Easy access to drains, filters and fittings



*The 60Z<sup>IV</sup>-2 can be equipped to tackle a wide array of tasks such as material handling in concrete, asphalt plants and millyards.*

## THE POWER TO PERFORM!

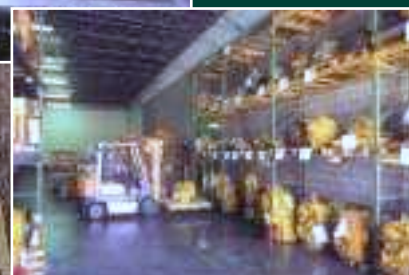
The 60Z<sup>IV</sup>-2 loader is a versatile, high productivity wheel loader for a wide range of applications from agriculture to road construction. Featuring a Cummins B5.9C diesel engine producing 109 flywheel horsepower, a 2.1 cu. yard bucket, a certified ROPS cab and a host of other features that provide high operating efficiency, ease of maintenance and safety, the 60Z<sup>IV</sup>-2 is becoming the wheel loader of choice.



## OPERATOR PRODUCTIVITY AND SAFETY

The 60Z<sup>IV</sup>-2 features a ROPS cab with an operator's compartment that offers unmatched comfort and is designed to maximize efficiency and productivity. The cab is accessible by ladders on both sides, has front and rear wipers and includes many other features which contribute to improved safety, visibility and comfort.





*Kawasaki and their dealer organization offer comprehensive support and service programs designed to keep you on the job.*

## **PUTTING THE 60Z-2 TO WORK**

Like all Kawasaki loaders, the 60Z-2 has a 35-year heritage of strength and reliability. The 60Z-2 is designed with the heaviest Z-linkage lift arms in its class for high breakout force. Single lever hydraulic control and single twist-grip transmission control offer ease of operation.

The 60Z-2 comes equipped with a 2.1 cubic yard bucket with a bolt-on cutting edge. A third spool valve, control lever, linkage and line are available to handle a number of attachments and extend the 60Z-2's versatility. Other buckets, Quick Couplers and attachments are also available.

The sealed wet disc brakes are designed for long life and easy access and overhaul. Standard spin-on filters, remote mounted grease fittings and oil drain simplify maintenance. The standard 15.5 x 25-12PR(10) L-2 tires and optional 17.5 x 25 tires use heavy duty rims.



helps eliminate unnecessary maintenance and helps find problems before they occur. Kawasaki also stocks an array of cost-effective rebuilt components.

## **UNMATCHED SUPPORT**

Kawasaki maintains a large inventory of new components to ensure outstanding parts availability and minimal downtime. In addition, a predictive oil analysis program

## **BUILT TO STAY ON THE JOB**

Kawasaki loaders are designed with the durability to provide years of service. Backed by a dealer network of heavy equipment experts and a dedicated support staff in the Kawasaki parts and service organization, your investment in a Kawasaki loader is an excellent choice that will pay dividends for years to come.



# POWER AND PERFORMANCE UNMATCHED PRODUCTIVITY

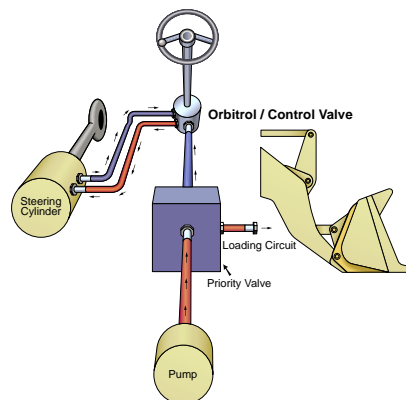
The Kawasaki **60Z-2** means business. It incorporates the best in design and technology, giving your operators the tool they need to get the job done.

Because Kawasaki specializes in the design and manufacture of articulated wheel loaders, you get a machine with a 35-year heritage of successful innovations. The power and productivity that the **60Z-2** brings to the job is a result of that experience.



## WORLD-CLASS ENGINES

- 109 HP emissions-compliant Cummins B5.9C diesel
- Compliant with tough new emissions standards for 2001
- Totally reengineered for longer service life
- Reliable and fuel efficient
- Extensive distribution system
- 24 volt battery system for reserve power



## HIGH EFFICIENCY HYDRAULIC SYSTEM

- Dry, reliable
- Cast iron gear pump
- Energy efficient, steering circuit supplements main
- Large oil reservoir keeps oil cooler



## TRANSMISSION

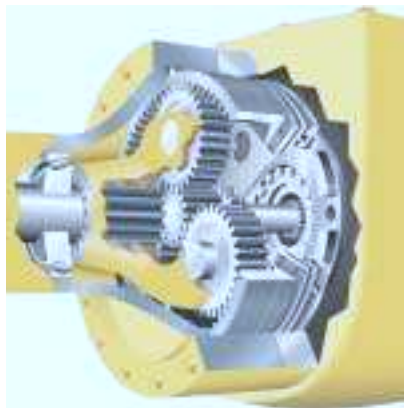
- Three-speed transmission with powershift
- Single lever control
- Transmission declutch selector switch activates left brake pedal declutch

# PROVIDE



## AXLES

- Torque-proportioning differentials offer increased traction in sand and mud while extending tire life
- 15.5 x 25-12PR (L-3) tires standard
- 17.5 x 25 x 12 (L-2 & L-3) tires available
- 4-wheel drive
- Oscillation range  $\pm 12^\circ$  (total  $24^\circ$ )



## BRAKES

- Four-wheel, dual-circuit wet disc brakes
- High capacity
- Long life
- Easy inspection and service



## LIFT ARMS/BUCKETS

- Heaviest in the class
- Z-linkage
- High breakout force
- 2.1 cu. yard bucket standard
- Easy loading
- Excellent load retention
- Full assortment of edges and teeth
- Complete array of attachments available
- Heel plates extend bucket life
- Bucket leveler standard
- Automatic boom height positioner

## STRONG, RUGGED CHANNEL FRAME

- Massive center pins and bearings
- High strength loader tower
- Heavy channel frame



# THE COMFORT ZONE

## CAB

- Excellent visibility
- Certified ROPS
- Isolation-mounted to reduce vibration
- Doors latch back
- Side windows slide down
- Wrap-around tinted windshields for excellent visibility
- Front and rear wipers and washers
- AM/FM cassette radio, standard
- One rearview and two side mirrors
- Reduced sound levels
- Air conditioner available
- Pressurized air control
- Heater, standard

## SEAT

- Seven-way adjustable seat with headrest and adjustable armrests standard
- Heavy-duty suspension
- Lumbar support

## CONTROLS

- Single lever hydraulic control standard
- Single, twist-grip transmission lever
- Gauges including speedometer
- All systems monitored with lights and alarms

## OPTIONAL FEATURES

- Air ride seat





# EASY ACCESS SIMPLIFIES SERVICING

- Hinged grille makes radiator cleaning easy
- Engine side covers open wide for optimum access
- Filters positioned within easy reach
- Easy access to drains, filters and fittings
- Grease fittings are grouped for easy lubrication
- Readily available Fleetguard and Donaldson filters
- Starters and alternators available through Cummins national distribution network
- Ladders on both sides of the machine
- Pressurized air control reduces dust in cab and control boxes



## OPTIONS

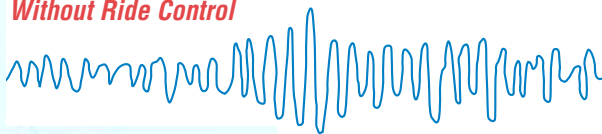
### QUICK COUPLER ATTACHMENT

The JRB Quick Coupler, can be used in conjunction with a variety of attachments, including:

- General and multi-purpose buckets
- Side dump bucket
- Construction utility forks
- Utility pallet forks
- Extendable boom
- Paddle top clamp forks
- Grapple bucket
- Loader rake and loader rake with hydraulic clamps



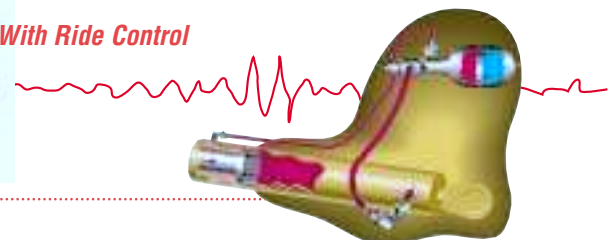
*Without Ride Control*



*Illustration representative of similar models.*



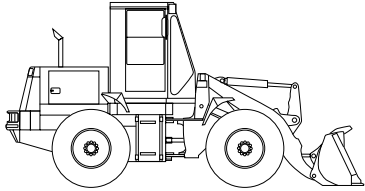
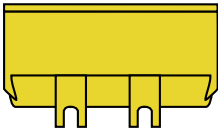
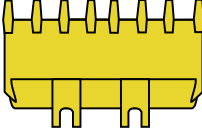
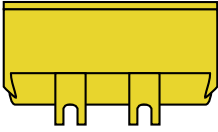
*With Ride Control*



### RIDE CONTROL

- Stable load handling
- Reduces operator fatigue
- Cuts vibration and equipment wear
- Improves safety and productivity
- Less spillage
- Faster travel speed

# 60Z<sup>IV</sup>-2 BUCKET DATA

			General Purpose		Material Handling
			With Bolt-on Cutting Edge	With Teeth	With Bolt-on Cutting Edge
					
Capacity	Heaped	yd <sup>3</sup> (m <sup>3</sup> )	2.1 (1.6)	2.0 (1.5)	2.4 (1.8)
	Struck	yd <sup>3</sup> (m <sup>3</sup> )	1.8 (1.4)	1.7 (1.3)	2.0 (1.5)
Maximum dumping clearance		ft-in (mm)	8'7 <sup>7</sup> / <sub>8</sub> " (2640)	8'7 <sup>7</sup> / <sub>8</sub> " (2555)	8'4 <sup>1</sup> / <sub>2</sub> " (2585)
Dumping reach (to front of bucket edge or tooth)		ft-in (mm)	3'6 <sup>1</sup> / <sub>2</sub> " (1085)	3'8 <sup>5</sup> / <sub>8</sub> " (1135)	3'8 <sup>1</sup> / <sub>4</sub> " (1125)
Bucket hinge pin height		ft-in (mm)	11'4 <sup>1</sup> / <sub>8</sub> " (3460)	11'4 <sup>1</sup> / <sub>8</sub> " (3460)	11'4 <sup>1</sup> / <sub>8</sub> " (3460)
Digging depth		ft-in (mm)	4 <sup>1</sup> / <sub>8</sub> " (105)	4 <sup>5</sup> / <sub>8</sub> " (120)	4 <sup>1</sup> / <sub>8</sub> " (105)
Breakout force		lb (kg)	17,600 (8000)	19,000 (8600)	16,300 (7400)
Bucket tilt-back angle	at ground level		42°	42°	42°
	at carry position		51°	51°	51°
Overall	Length	ft-in (mm)	21'5 <sup>9</sup> / <sub>16</sub> " (6540)	21'6" (6555)	21'4 <sup>7</sup> / <sub>8</sub> " (6525)
	Height	ft-in (mm)	10'1 <sup>1</sup> / <sub>2</sub> " (3085)	10'1 <sup>1</sup> / <sub>2</sub> " (3085)	10'1 <sup>1</sup> / <sub>2</sub> " (3085)
Width (outside tire)		ft-in (mm)	7'5" (2260)	7'5" (2260)	7'5" (2260)
Width (outside bucket)		ft-in (mm)	8'1 <sup>1</sup> / <sub>2</sub> " (2450)	8'1 <sup>1</sup> / <sub>2</sub> " (2450)	8'1 <sup>1</sup> / <sub>2</sub> " (2450)
Wheel base		ft-in (mm)	8'8 <sup>3</sup> / <sub>8</sub> " (2650)	8'8 <sup>3</sup> / <sub>8</sub> " (2650)	8'8 <sup>3</sup> / <sub>8</sub> " (2650)
Minimum turning radius	at outside bucket	ft-in (mm)	17'6" (5335)	17'7 <sup>1</sup> / <sub>4</sub> " (5365)	17'6 <sup>7</sup> / <sub>8</sub> " (5355)
	at center of outside tire	ft-in (mm)	15'2 <sup>3</sup> / <sub>4</sub> " (4640)	14'11 <sup>7</sup> / <sub>8</sub> " (4570)	14'11 <sup>7</sup> / <sub>8</sub> " (4570)
Minimum ground clearance		ft-in (mm)	1'2 <sup>3</sup> / <sub>4</sub> " (375)	1'2 <sup>3</sup> / <sub>4</sub> " (375)	1'2 <sup>3</sup> / <sub>4</sub> " (375)
Full articulation angle		degree	40°	40°	40°
Operating weight (with ROPS Cab)		lb (kg)	19,045 (8638)	18,725 (8488)	18,855 (8548)
Static tipping load (with ROPS Cab)	Straight	lb (kg)	16,016 (7265)	16,330 (7405)	16,170 (7335)
	Full turn	lb (kg)	13,774 (6248)	14,010 (6358)	13,860 (5838)

Measured in accordance with SAE J732C & J742

Materials and specifications are subject to change without notice and without obligation on the part of the manufacturer. The specifications supplied, while believed to be completely reliable, are not to be taken as warranty for which we assume legal responsibility.

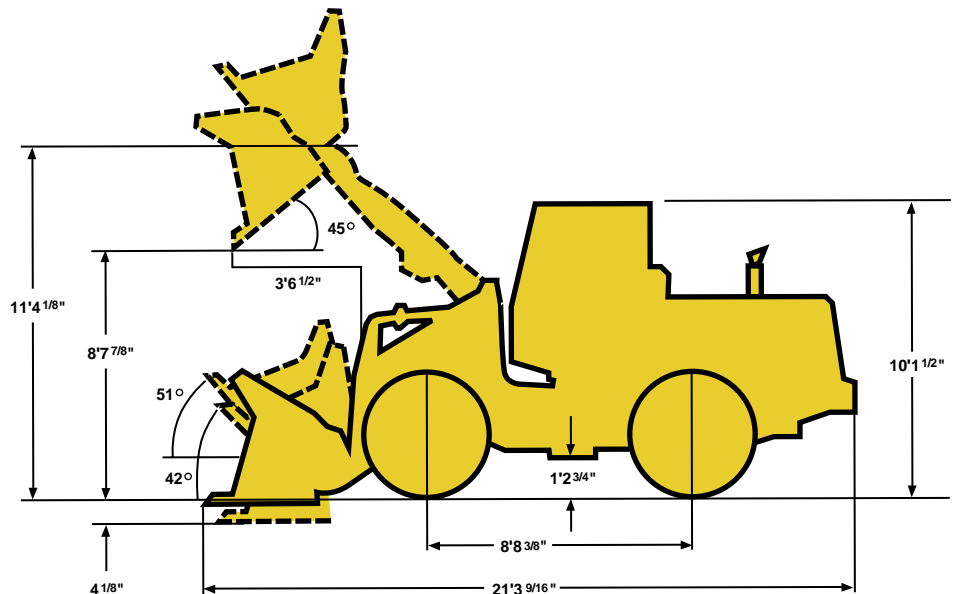


# 60Z<sup>IV</sup>-2 OPERATING SPECIFICATIONS

## WEIGHTS AND DIMENSIONS (SUPPLEMENTAL DATA)

		Operating Weight	Tipping Load			Overall Width (Outside Tire)	Vertical Dimensions	Overall Length
			Straight	Full Turn				
ROPS Canopy (Instead of ROPS Cab)	lb (kg)	-530 (-240)	-490 (-220)	-420 (-190)	in (mm)		-2" (-50)	
Remove ROPS Canopy and Cab (for transport only)	lb (kg)	-995 (-450)	-895 (-405)	-785 (-355)	in (mm)		-14" (-355)	
Counterweight (Deduct) (Instead of rear tire ballast)	lb (kg)	-615 (-278)	-1180 (-535)	-1010 (-458)	in (mm)			+2" (+50)
Tires:								
17.5-25-12PR (L-2), (L-3)	lb (kg)	+200 (+90)	+130 (+60)	+110 (+50)	in (mm)	+1' 1/8" (+30)	+1' 1/8" (+30)	-1' 1/8" (-30)
15.5-25-12PR (L-2), (L-3) with 75% CaCl	lb (kg)	+925 (+420)	+1190 (+540)	+1045 (+475)	in (mm)			
17.5-25-12PR (L-2), (L-3) with 75% CaCl	lb (kg)	+1410 (+640)	+1810 (+820)	+1600 (+730)	in (mm)	+1' 1/8" (+30)	+1' 1/8" (+30)	-1' 1/8" (-30)
Air conditioner	lb (kg)	+150 (+70)	+130 (+60)	+110 (+50)	in			
Belly Guard (rear frame)	lb (kg)	+90 (+40)	+75 (+35)	+65 (+30)	in			

Tread ..... 6'1 1/4" (1860mm)  
 Width (outside tire) ..... 7'5" (2260mm)  
 Width (outside bucket) ..... 8'1/2" (2450mm)  
 Equipped with GSC bucket 2.1 yd<sup>3</sup> with bolt on cutting edge  
 15.5-25-12PR (L-2) Tire and ROPS Cab



The weight and load figure include Enclosed ROPS Cab. 15.5-25-12PR (L-2) tires. Full fuel tank and operator, optional counterweight.

# 60Z<sup>IV</sup>-2 OPERATING SPECIFICATIONS

## ENGINE

Make/Model/Fuel Type	Cummins/B5.9-C/Diesel
Type	4-cycle, watercooled, direct injection
Net flywheel horsepower	109HP/2400 RPM
Torque	325 ft. lbs./1600 RPM
Number of cylinders	6
Bore and stroke	4.02" x 4.72" (102mm x 120mm)
Total displacement	359 in <sup>3</sup> (5883 cm <sup>3</sup> )
Alternator	DC24V-1200w (50amp)
Starting motor	24V-4.5kw (6HP)
Battery	12V-65AH, 2 units
Governor	All-speed, mechanical type

## TORQUE CONVERTER AND TRANSMISSION

Torque converter	3 elements, single stage
Torque stall ratio	3.02:1
Main clutches	Wet hydraulic, multi-disc type
Cooling method	Forced circulation type
Transmission	Full power shift, 3 forward, 3 reverse
Forward & reverse (maximum speed)	1st: 4.8 MPH (7.8 km/hr) 2nd: 9.5 MPH (15.3 km/hr) 3rd: 20.1 MPH (32.4 km/hr)

## SERVICE REFILL CAPACITY

LOCATION	CAPACITY:	Gallons	Liters
Engine (coolant)		8.50	(32)
Fuel tank (diesel fuel)		46.25	(175)
Engine oil (oil pan)		3.75	(14)
Front axle (gear oil)		5.25	(20)
Rear axle (gear oil)		5.25	(20)
Torque converter and transmission (engine oil)		5.25	(20)
Hydraulic system including tank (hydraulic oil)		26.50	(100)
Brake oil tank (engine oil)		0.50	(2)

## HYDRAULIC AND STEERING SYSTEM

Steering type	Articulated frame steering	
Steering mechanism	Hydraulic power steering (Orbitrol)	
Lift (boom) cylinder	Two (2) double-acting piston type: 4 3/8" x 25 1/4" (110mm x 641mm)	
Tilt (bucket) cylinder	One (1) double-acting piston type: 4 3/4" x 18 1/4" (120mm x 464mm)	
Steering cylinder	Two (2) double-acting piston type: 2 3/8" x 16" (60mm x 405mm)	
Main oil pump	Gear type: 31 GPM/1000psi @2400 RPM (117 LPM/70kg/cm <sup>2</sup> @2400 RPM)	
Relief valve set pressure	Loading	3000 psi (210 kg/cm <sup>2</sup> )
	Steering	2490 psi (175 kg/cm <sup>2</sup> )
HYDRAULIC CYCLE TIME*		
Lifting time (at full load)	6.0 sec.	
Lowering time (empty)	3.0 sec.	
Bucket dumping time	1.2 sec.	
TOTAL	10.2 sec.	

\* Measured in accordance with SAE J732C

## AXLE SYSTEM

Drive system	4-wheel drive	
Front and rear axle	Semi-floating banjo type	
Tires	Standard	15.5 x 25-12PR (L-2)
	Optional	15.5 x 25-12PR (L-3) 17.5 x 25-12PR (L-2) 17.5 x 25-12PR (L-3)
Reduction and differential gear	Spiral bevel/gear, 1 stage reduction, torque proportioning type	
Final reduction gear	Internal planetary gear (5.44:1) inboard mounted	
Oscillation angle	±12°/ 1'3 3/8" (390mm)	

## BRAKE SYSTEM

Service brakes	4-wheel fully hydraulic wet disc brakes with independent systems for front and rear wheels with inching system (inboard mounted)	
Parking/Emergency brake	Mechanical, located on front drive shaft.	



# 60Z<sup>IV-2</sup> EQUIPMENT DATA

## STANDARD EQUIPMENT

Air Cleaner (Double Element Donaldson) Alarms (Audible): Brake Oil Level Brake Oil Pressure Engine Oil Pressure Parking Brake with T/M Engaged Alarms (Visual): Air Filter Battery Discharge Brake Oil Level Brake Oil Pressure Engine Oil Pressure Engine Coolant Temperature Converter Oil Temperature Parking Brake Alternator (24V, 40 amp) AM/FM Cassette Radio	Batteries: 12V-65AH (2 units) Brake (Parking) Mechanical Drum type Brakes (Service) Oil Actuation Enclosed Wet Disc Dual System Bucket Control Lever (Single) Bucket Leveler Boom Kickout Cold Start Aid Drawbar Electrical System (24 volt) Engine Water Expansion Tank Fan (Blower) Fenders (Front and Rear) Gauges: Fuel Level Hour Meter	Hydraulic Oil Level Speedometer Heater/Pressurizer (40,000 BTU) Hoodside (Hinged) Horn (Electric) Indicators: High Beam Transmission Declutch Working Light Linkage (Z-type, Sealed) Lights: 4 Front 2 Rear 2 Stop/Tail 2 Backup 2 ROPS Muffler Neutral Safety Start Operator's Manual Box	Radiator: Heavy Duty Plate Fin Type Radiator Grille, Hinged Reverse Alarm ROPS Cab: Enclosed cab with sound suppression, front lights, front and rear wipers and washers, one rear and two side mirrors, tinted glass, and sliding side windows Safety Articulation Locking Bar Seat (Deluxe, adjustable sus- pension with headrest and adjustable armrests) Seat Belt, 3" wide Torque Proportioning Differentials Transmission Declutch Selector Switch Vandalism Protection
--	--	---	---

## OPTIONAL EQUIPMENT

Air conditioner (with heater & defroster) (R134a refrigerant) Belly Guard Bolt-on Counterweight Bucket Control Lever: Dual Cushion Dump Valve Hi-Lift Arms	Hydraulic System three (3) spool valve, control lever, linkage & lines No spin differential Precleaner Quick Coupler and Attachments	Ride Control ROPS Canopy Seat, Air Ride Tires: 15.5-25-12PR (L-3), 17.5-25-12PR (L-2), 17.5-25-12PR (L-3)	Tire Rims—3-Piece Turn Signal With Four-way Flasher Vandalism Cover For Operation Panel
--	--	--	---

# KAWASAKI LOADERS

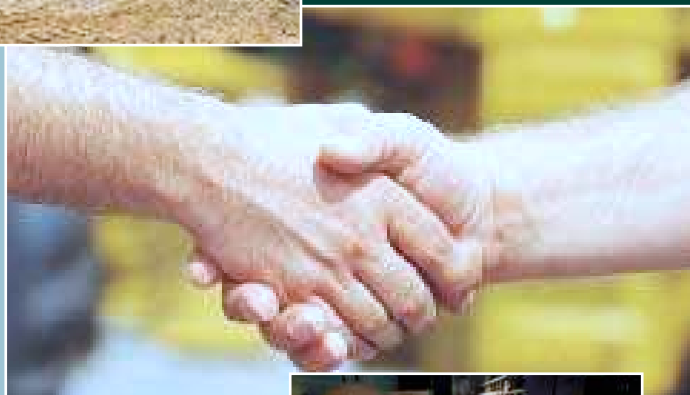
## *More Than A Machine, A Complete Solution*

Kawasaki Construction Machinery Corp. of America, a division of Kawasaki Heavy Industries, is a leading supplier of a full range of high quality wheel loaders. In fact, Kawasaki is the oldest on-going manufacturer of articulated, rubber-tired wheel loaders in the world. With over 35 years of proven performance history, Kawasaki wheel loaders have continuously evolved to bring you the best in equipment and support services, backed by a carefully selected dealer network.

Kawasaki articulated wheel loaders incorporate innovative design features coupled with extensive knowledge and experience gained from real-world applications. Kawasaki pioneered Z-Link design to provide unmatched utility, high breakout force and efficiency in its machines. Powered by proven emissions-compliant Cummins diesel engines, durability and serviceability are designed into every Kawasaki loader.

Kawasaki loaders are assembled at the company's modern facilities in Newnan, GA. Service and support operations are headquartered in Kennesaw, GA.

A state-of-the-art parts distribution system links dealers with the main parts warehouse, allowing them to order parts directly. Qualified craftsmen rebuild components for all Kawasaki models at our fully-equipped rebuild center, making component exchange easier and faster. An independent oil analysis program allows monitoring of critical systems to reduce unscheduled downtime.



The independent dealers that represent and support Kawasaki loaders are experts in their markets and are dedicated to providing you with the best service available. Together, we are committed to making your investment in a Kawasaki loader a sound business decision that will pay dividends for years to come.



 **Kawasaki**  
KAWASAKI CONSTRUCTION MACHINERY  
CORP. OF AMERICA

2140 Barrett Park Drive • Suite 101  
P.O. Box 1657  
Kennesaw, Georgia 30144  
Tel: 770-499-7000  
Fax: 770-421-6842  
[www.kawasakiloaders.com](http://www.kawasakiloaders.com)

