

115Z^{IV}

Kawasaki



Get What You Need

115Z^{IV}

The new **115Z^{IV}** offers everything you ever wanted in a wheel loader: productivity, durability, versatility. The **115Z^{IV}** has it all ... including support you can rely on ... close to home.

More Than 30 Years of Quality Wheel Loaders

Kawasaki Construction Machinery Corp. of America, a division of Kawasaki Heavy Industries, is a leading supplier of a full range of high-quality wheel loaders. With over 30 years of proven performance history, Kawasaki wheel loaders have continuously evolved to bring you the best in equipment and support services, backed by a carefully selected dealer network.

Kawasaki articulated wheel loaders incorporate innovative design features coupled with extensive knowledge and experience gained from real-world applications. Kawasaki pioneered Z-Link design to provide unmatched utility, high breakout force and efficiency in its machines. Powered by proven emissions-compliant Cummins diesel engines, durability and serviceability are designed into every Kawasaki loader.

Kawasaki loaders are assembled at the company's modern manufacturing facilities in Newnan, GA. Service and support operations are headquartered in Kennesaw, GA.

A state-of-the-art parts distribution system links dealers with the main parts warehouse, allowing them to order parts directly. Qualified craftsmen rebuild components for all Kawasaki models at our fully equipped rebuild center, making component exchange easier and faster. An independent oil analysis program allows monitoring of critical systems to reduce unscheduled downtime.

The independent dealers that represent and support Kawasaki loaders are experts in their markets and are dedicated to providing you with the best service available. Together, we are committed to making your investment in a Kawasaki loader a sound business decision that will pay dividends for years to come.



In A Heavy-Duty Loader...

Improved Operator Comfort Means Greater Productivity

CAB

- Certified ROPS, FOPS
- Isolation-mounted to reduce vibration
- Low noise level
- Doors latch back
- Side windows slide down
- Tinted windshields
- Front & rear wipers and washers
- AM/FM cassette player available

SEAT

- Best seat in the industry
- New six-way adjustable seat with lumbar support
- Heavy-duty suspension
- Side bolsters

CLIMATE CONTROL STANDARD

- 25,000 BTU air conditioner available
- 40,000 BTU heater
- Pressurizer reduces dust
- Touch pad controls



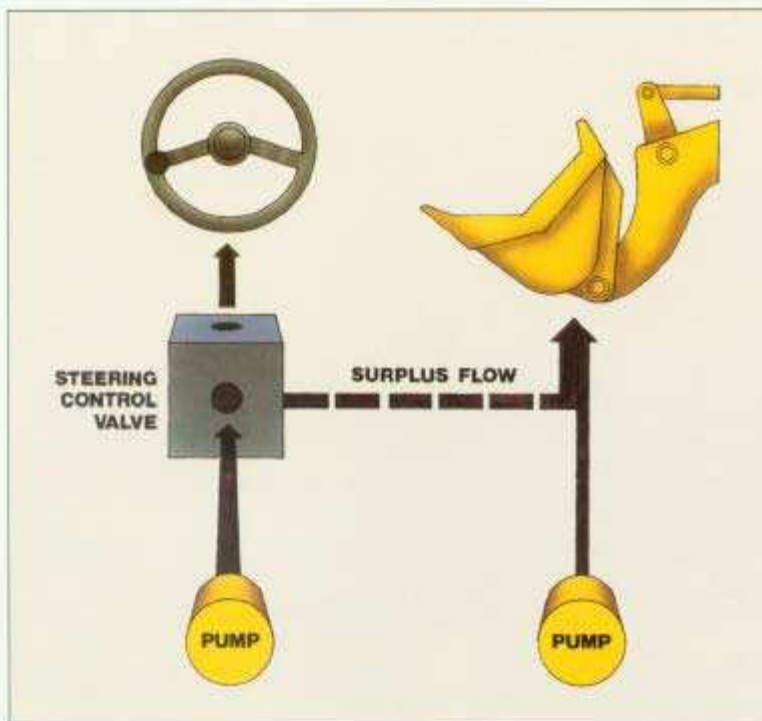
CONTROLS

- Dual, pilot-assisted hydraulic controls—fingertip control
- Adjustable wrist-rest
- Low-effort steering
- Tilt steering wheel adjusts to the operator's needs
- Single, twist-grip transmission lever
- Low profile dash improves visibility
- Gauges include tachometer
- Systems monitored with lights and alarms
- Transmission declutch switch activates left brake pedal as declutch

Kawasaki



Kawasaki Powertrain Compo

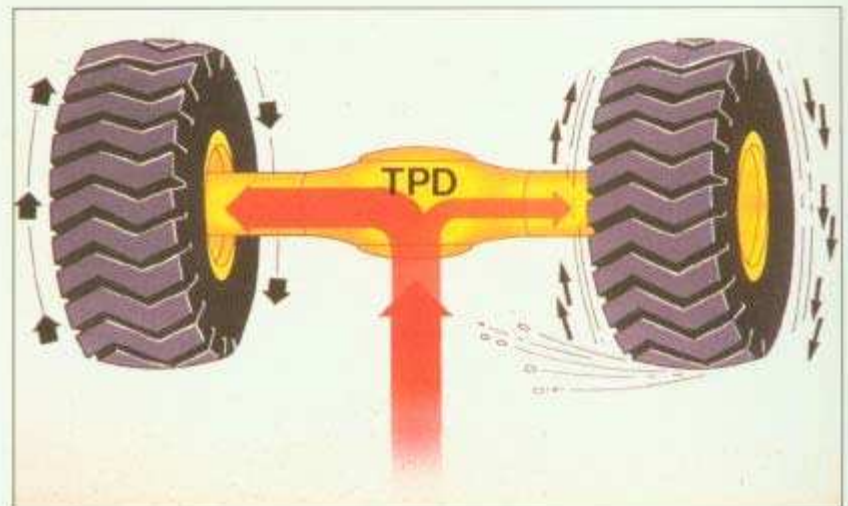


ENGINE

- Cummins QSK19
- 410 flywheel horsepower
- High torque, fuel efficient
- Cummins electrical components
- Reliable
- Worldwide distribution system

A HYDRAULIC SYSTEM DESIGNED FOR EFFICIENT PERFORMANCE

- Dry, reliable
- Cast iron gear pumps
- Energy efficient system, steering supplements main
- Easy access to two-spool control valve
- SAE flange type hoses
- Large oil reservoir — (keeps oil cooler)



AXLES

- Heavy-duty torque proportioning differentials
- Outboard-mounted, 4-plant gear, final drives
- Improved rear axle trunnion sealing
- 35/65 - 33 - 24PR (L4) tires standard
- L5 radial tires available

115Z TRV

ments Offer Built-In Reliability

TRANSMISSION

- Four-speed, planetary powershift
- Heavy duty design increases reliability
- Automatic shift speeds cycles
- Autobrake prevents overspeeding
- Standard SAE universal joints
- Larger drivelines

Kawasaki

BRAKES

- Outboard wet disc brakes
- High capacity, dual system for safety
- Long life
- Unique design — mounted to low torque side
- Easy access — mounted directly behind planetaries
- Fewer brake discs needed
- Auto-adjusters maintain brake feel

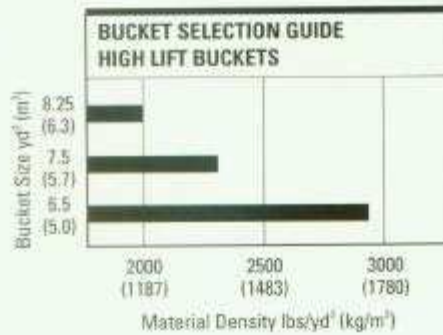
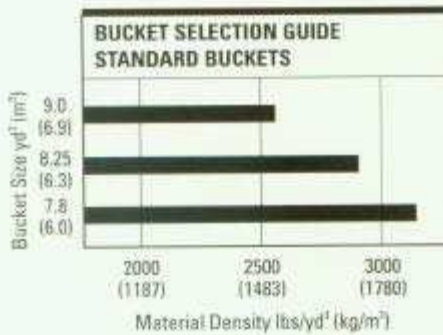
RIDE CONTROL (optional)

- Reduces bounce
- Speeds cycles
- Increased operator comfort
- Reduce spillage
- Load sensitive
- Automatic

Kawasaki **115Z** Loaders Are Built

BUCKETS

- Rugged and durable rock buckets
- Box floor for rigidity
- Easy loading
- Excellent load retention
- Full assortment of edges and teeth
- ESCO zipper lip available
- Bolt-on wear plates standard



FRAME

- Heavy, full box-section rear chassis
- Large center pins and bearings
- High strength loader tower

LIFT ARMS

- Heaviest in the class
- Unique dual Z-linkage spreads load and improves visibility
- Special triple-sealed lower bucket pins



For Performance And Durability



**Kawasaki Delivers Service and Support...
Because You Just Don't Buy a Loader, You Live With It.**

SERVICEABILITY

- Hinged radiator grille improves access
- Common key for ignition and vandalism covers
- Engine side covers open wide for better access to engine
- Donaldson & Fleetguard filters—easily accessible
- Remote engine oil and coolant drain
- Grease fittings are grouped for efficient lubrication
- Fusible link protects against electrical surges

SUPPORT

- Economical, effective, "KLEW" oil sampling system
- Factory rebuilt exchange program includes six month warranty
- Outstanding parts availability
- Extended powertrain warranty available
- Extensive qualified independent distribution network

115Z_{TR}

Kawasaki



Operating Specifica

ENGINE

Make/Model/Fuel Type	Cummins QSK19
Type	4-cycle, watercooled, turbocharged direct injection
Net flywheel horsepower	410HP/2000 RPM
Maximum torque	1300 ft/lb @ 1300 RPM
Number of cylinders	6
Bore and stroke	6.25" x 6.25" (159mm x 159mm)
Total displacement	1150 in ³ (18,853 cm ³)
Alternator	AC24V-1800W (75 amp)
Starting motor	24V-8.9kw (12HP)
Battery	12V-200AH, 2 units
Governor	All-speed, mechanical type

TORQUE CONVERTER AND TRANSMISSION

Torque converter	3 elements, single stage, 1-phase
Torque stall ratio	3.0:1
Main clutches	Wet hydraulic, multi-disk type
Cooling method	Forced circulation type
Transmission	Full powershift, 4 forward, 3 reverse with automatic mode (2nd-4th) with downshift switch for 2nd-1st downshifting. Autobrake protects transmission from overspeeding
Speeds Forward	1st: 4.1 MPH (6.6km/hr) 2nd: 7.6 MPH (12.2km/hr) 3rd: 12.7 MPH (20.4 km/hr) 4th: 19.3 MPH (31.1 km/hr)
Speeds Reverse	1st: 4.4 MPH (7.1 km/hr) 2nd: 8.1 MPH (13.1 km/hr) 3rd: 13.5 MPH (21.8 km/hr)

SERVICE REFILL CAPACITY

LOCATION	CAPACITY:	Gallons	Liters
Engine (coolant)		34	(128)
Fuel tank (diesel fuel)		164	(620)
Engine (oil pan)		18	(67)
Front axle (gear oil)		48	(180)
Rear axle (gear oil)		48	(180)
Torque converter and transmission (engine oil)		22	(85)
Hydraulic system including tank (hydraulic oil)		124	(470)
Brake oil tank (engine oil)		1.1	(4)

HYDRAULIC AND STEERING SYSTEM

Steering type	Articulated frame steering	
Steering mechanism	Hydraulic power steering unit, pilot operated type	
Lift (boom) cylinder	Two (2) double-acting piston type: 8 ⁷ / ₁₆ " x 3' 8 ⁷ / ₁₆ " (225mm x 1132mm)	
Tilt (bucket) cylinder	Two (2) double-acting piston type: 7 ¹ / ₂ " x 2' 6 ⁷ / ₁₆ " (190mm x 767mm)	
Steering cylinder	Two (2) double-acting piston type: 4 ⁷ / ₁₆ " x 2' 4 ⁷ / ₁₆ " (110mm x 720mm)	
Steering oil pump (double section)	Gear type: 110.4 GPM @ 2000 RPM (418 LPM @ 2000 RPM)	
Main oil pump	Gear type: 52 GPM @ 2000 RPM (197 LPM @ 2000 RPM)	
Pilot/Brake oil pump	Gear type: 24 GPM @ 2000 RPM (90.9 LPM @ 2000 RPM)	
Relief set pressure	Loading	3000 psi (210 kg/cm ²)
	Steering	3000 psi (210 kg/cm ²)
HYDRAULIC CYCLE TIME*		
Lifting time (at full load)	8.7 sec.	
Lowering time (empty)	4.4 sec.	
Bucket dumping time	2.1 sec.	
TOTAL	15.2 sec.	

* Measured in accordance with SAE J732G

AXLE SYSTEM

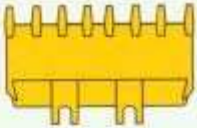
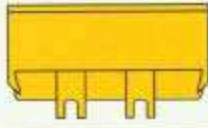
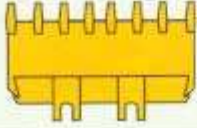
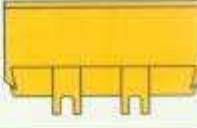
Drive system	4-wheel drive	
Front and rear axle	Full floating banjo type	
Tires	Standard	35/36-33-24PR (L-4)
	Optional	35/65-33-24PR (L-5) 29.5-29-28PR (L-3) (L-4) (L-5)
Reduction & differential gear	Spiral bevel gear, 1 stage reduction	
Final reduction gear	Outboard mounted, internal planetary gear	
Oscillation angle	±13° (total 26°)	

BRAKE SYSTEM


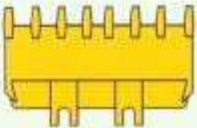
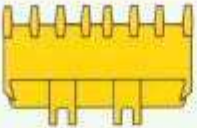
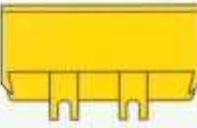
Service brakes	4 wheel adjustment-free, wet multiple disk brake. Controlled by full hydraulic system. Dual circuit
Parking/Emergency brake	Spring applied air released and oil applied accumulator type, located in front driveline.

Specifications and Bucket Data



			Standard Boom			
			Rock-V-Edge		Rock-Straight	General Purpose
			With Teeth	Without Teeth	With Teeth	With Bolt-on Cutting Edge
						
Capacity	Heaped	yd ³ (m ³)	7.8 (6.0)	7.8 (6.0)	7.8 (6.0)	8.25 (6.3)
	Struck	yd ³ (m ³)	6.9 (5.3)	6.9 (5.3)	6.7 (5.1)	7.0 (5.3)
Maximum dumping clearance		ft-in (mm)	10'10 ³ / ₁₆ " (3320)	11'9 ¹ / ₄ " (3600)	11'5" (3480)	11'10" (3605)
Dumping reach (to front of bucket edge or tooth)		ft-in (mm)	6'5 ⁷ / ₁₆ " (1970)	5'11" (1800)	5'11 ¹ / ₄ " (1810)	5'8 ⁷ / ₈ " (1750)
Bucket hinge pin height		ft-in (mm)	16'6 ¹ / ₂ " (5040)	16'6 ¹ / ₂ " (5040)	16'6 ¹ / ₂ " (5040)	16'6 ¹ / ₂ " (5040)
Digging depth		ft-in (mm)	7 ¹ / ₁₆ " (180)	3 ³ / ₁₆ " (90)	7 ¹ / ₁₆ " (180)	5 ¹ / ₈ " (130)
Breakout force:		lb (kg)	84,900 (38,500)	84,900 (38,500)	101,000 (45,800)	86,900 (39,400)
Bucket tilt-back angle:	at ground level		43°	43°	43°	43°
	at carry position		50°	50°	50°	50°
Overall	Length	ft-in (mm)	36'10 ¹ / ₈ " (11230)	35'5" (10795)	36'1 ¹ / ₁₆ " (11000)	35'6 ⁵ / ₈ " (10830)
	Height	ft-in (mm)	13'5 ⁷ / ₁₆ " (4110)	13'5 ⁷ / ₁₆ " (4110)	13'5 ⁷ / ₁₆ " (4110)	13'5 ⁷ / ₁₆ " (4110)
	Width (outside tire)	ft-in (mm)	11'8 ⁹ / ₁₆ " (3570)	11'8 ⁹ / ₁₆ " (3570)	11'8 ⁹ / ₁₆ " (3570)	11'8 ⁹ / ₁₆ " (3570)
	Width (outside bucket)	ft-in (mm)	12'4 ⁹ / ₁₆ " (3770)	12'4 ⁹ / ₁₆ " (3770)	12'4 ⁹ / ₁₆ " (3770)	12'4 ⁹ / ₁₆ " (3770)
Wheel base		ft-in (mm)	13'3 ⁷ / ₁₆ " (4050)	13'3 ⁷ / ₁₆ " (4050)	13'3 ⁷ / ₁₆ " (4050)	13'3 ⁷ / ₁₆ " (4050)
Minimum turning radius:	at outside bucket	ft-in (mm)	27'2" (8280)	26'9 ¹ / ₄ " (8160)	27'2" (8280)	27 ³ / ₈ " (8240)
	at center of outside tire	ft-in (mm)	22'7 ¹ / ₄ " (6890)	22'7 ¹ / ₄ " (6890)	22'7 ¹ / ₄ " (6890)	22'7 ¹ / ₄ " (6890)
Minimum ground clearance		ft-in (mm)	1'9 ¹ / ₂ " (550)	1'9 ¹ / ₂ " (550)	1'9 ¹ / ₂ " (550)	1'9 ¹ / ₂ " (550)
Full articulation angle		degree	40°	40°	40°	40°
Operating weight (with ROPS Cab)		lb (kg)	96,420 (43,730)	95,800 (43,450)	95,980 (43,530)	95,920 (43,500)
Static Tipping Load (with ROPS cab)	Straight	lb (kg)	61,300 (27,800)	60,070 (28,150)	62,180 (28,200)	61,740 (28,000)
	Full turn	lb (kg)	52,480 (23,800)	53,250 (24,150)	53,360 (24,200)	52,920 (24,000)

The weight and lead figure includes optional counterweight, Enclosed ROPS Cab, 36/65-33-24PR tires. Full fuel tank and operator.

			High Lift Boom			
			Rock-V-Edge		Rock-Straight	General Purpose
			With Teeth	Without Teeth	With Teeth	With Bolt-on Cutting Edge
						
Capacity	Heaped	yd ³ (m ³)	6.5 (5.0)	6.5 (5.0)	6.5 (5.0)	7.5 (5.6)
	Struck	yd ³ (m ³)	5.6 (4.3)	5.6 (4.3)	5.5 (4.3)	6.5 (5.0)
Maximum dumping clearance		ft-in (mm)	12'7" (3835)	13'6" (4115)	13'1 1/2" (4000)	13'7 1/2" (4150)
Dumping reach (to front of bucket edge or tooth)		ft-in (mm)	6'6 1/8" (1995)	5'11 1/4" (1825)	6' 1/8" (1830)	5'8 1/8" (1750)
Bucket hinge pin height		ft-in (mm)	18 1/2" (5490)	18 1/2" (5490)	18 1/2" (5490)	18 1/2" (5490)
Digging depth		ft-in (mm)	7 1/8" (180)	3 5/8" (90)	7 1/8" (180)	5 1/8" (130)
Breakout force		lb (kg)	90,400 (41,000)	90,400 (41,000)	108,900 (49,400)	94,800 (43,000)
Bucket tilt-back angle	at ground level		43°	43°	43°	43°
	at carry position		50°	50°	50°	50°
Overall	Length	ft-in (mm)	38' 11 1/16" (11600)	36' 8 3/16" (11,200)	37' 3 1/8" (11,370)	36' 6 1/16" (11,130)
	Height	ft-in (mm)	13' 5 3/16" (4110)	13' 5 1/16" (4110)	13' 5 3/16" (4110)	13' 5 3/16" (4110)
	Width (outside tire)	ft-in (mm)	11' 8 9/16" (3570)	11' 8 9/16" (3570)	11' 8 9/16" (3570)	11' 8 9/16" (3570)
	Width (outside bucket)	ft-in (mm)	12' 4 1/8" (3770)	12' 4 1/8" (3770)	12' 4 1/8" (3770)	12' 4 1/8" (3770)
Wheel base		ft-in (mm)	13' 3 1/16" (4050)	13' 3 1/16" (4050)	13' 3 1/16" (4050)	13' 3 1/16" (4050)
Minimum turning radius	at outside bucket	ft-in (mm)	22' 7 1/4" (6890)	22' 7 1/4" (6890)	22' 7 1/4" (6890)	22' 7 1/4" (6890)
	at center of outside tire	ft-in (mm)	27' 9 1/2" (8460)	27' 3 1/2" (8330)	27' 9 1/8" (8460)	27' 6 1/4" (8400)
Minimum ground clearance		ft-in (mm)	1' 9 1/8" (550)	1' 9 1/8" (550)	1' 9 1/8" (550)	1' 9 1/8" (550)
Full articulation angle		degree	40°	40°	40°	40°
Operating weight (with ROPS Cab)		lb (kg)	97,840 (44,370)	97,220 (44,090)	97,420 (44,180)	96,760 (43,880)
Static Tipping Load (with ROPS cab)	Straight	lb (kg)	56,890 (25,800)	57,770 (26,200)	57,550 (26,100)	57,330 (26,000)
	Full turn	lb (kg)	48,730 (22,100)	49,390 (22,400)	49,170 (22,300)	48,950 (22,200)

tions and Equipment Data

WEIGHTS AND DIMENSIONS (SUPPLEMENTAL DATA)

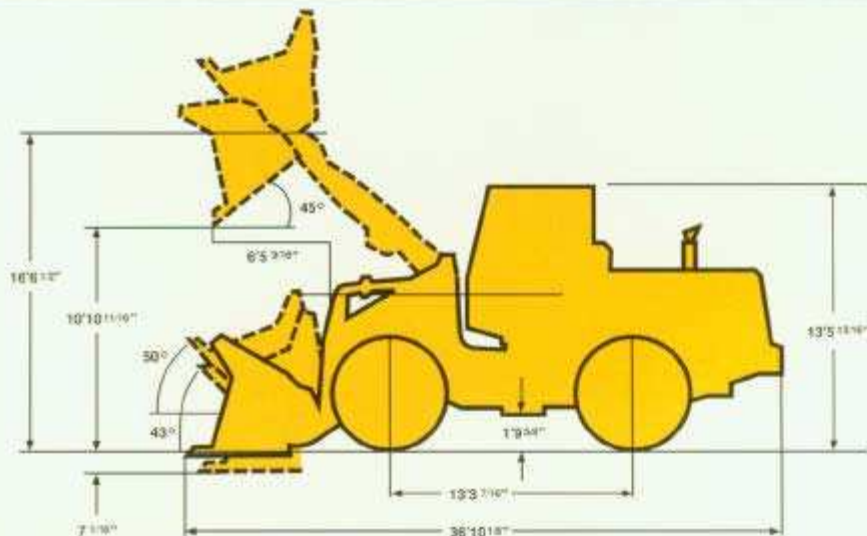
		Operating Weight	Tipping Load		Overall Width (Outside Tire)	Tread	Vertical Dimensions	Overall Length
			Straight	Full Turn				
ROPS Canopy (Instead of ROPS Cab)	lb (kg)	-800 (-360)	-620 (-280)	-620 (-280)	in (mm)			
Remove ROPS Canopy and Cab (for transport only)	lb (kg)	-2770 (-1260)			in (mm)		-1'5 1/16" (-43)	
Counter Weight	lb (kg)	+1340 (+610)	+3240 (+1470)	+2690 (+1220)	in (mm)			
Tires: 35/65-33-24PR (L-5)	lb (kg)	+1500 (+680)	+10600 (+480)	+930 (+420)	in (mm)		+1" (+25)	+1" (-25)
29.5-29-28PR (L-3)	lb (kg)	-4070 (-1850)	-2890 (-1310)	-2530 (-1150)	in (mm)	-4 3/4" (-120)	-3 1/8" (-80)	+3 1/8" (+80)
29.5-29-28PR (L-4)	lb (kg)	-2200 (-1000)	-1540 (-700)	-1370 (-620)	in (mm)	-4 3/4" (-120)	-1 1/2" (-40)	+1 1/2" (+40)
29.5-29-28PR (L-5)	lb (kg)	-1210 (-550)	-830 (-380)	-750 (-340)	in (mm)	-4 3/4" (-120)	-1 1/2" (-40)	+1 1/2" (+20)
35/65-33-24 (L-4) (75% CaCl ₂)	lb (kg)	+5950 (+2700)	+8420 (+3820)	+7430 (+3370)	in (mm)			
35/65-33-24 (L-5) (75% CaCl ₂)	lb (kg)	+7450 (+3380)	+10540 (+4780)	+9300 (+4220)	in (mm)		+1" (+25)	+1" (-25)
29.5-29-28PR (L-3) (75% CaCl ₂)	lb (kg)	+500 (+250)	+770 (+350)	+680 (+310)	in (mm)	-4 3/4" (-120)	-3 1/8" (-80)	+3 1/8" (+80)
29.5-29-28PR (L-4) (75% CaCl ₂)	lb (kg)	+2430 (+1100)	+3420 (+1550)	+3020 (+1370)	in (mm)	-4 3/4" (-120)	-1" (-40)	+1" (+40)
29.5-28PR (75% CaCl ₂)	lb (kg)	+3420 (+1550)	+48300 (+2190)	+4250 (+1930)	in (mm)	-4 3/4" (-120)	-1 1/2" (-40)	+1 1/2" (+20)
Air conditioner	lb (kg)	+220 (+100)	+310 (+140)	+260 (+120)	in (mm)			
Belly Guard (Rear Frame)	lb (kg)	+310 (+140)	+420 (+190)	+375 (+170)	in (mm)			

Tread 8 8 1/16" (2050mm)

Width (outside tire) 11' 8 1/16" (3570mm)

Width (outside bucket) 12' 4 1/16" (3770mm)

Equipped with Rock-V-Edge bucket with bolt on cutting edge
35/65-33-24PR (L-4) Tire and ROPS Cab



115Z^{IV}



Kawasaki
KAWASAKI CONSTRUCTION MACHINERY
CORP. OF AMERICA

2140 Barrett Park Drive, Suite 101
Kennesaw, GA 30144
Tel: (770) 499-7000
Fax: (770) 421-6842

STANDARD EQUIPMENT

Adjustable Steering Column	(Dual, Pilot Assisted)	2 Stop/Tail
Air Cleaner (Double element Donaldson with Precleaner)	Bucket Leveler	Linkage (Dual Z-type sealed)
Air Conditioner/Heater/ Pressurizer	Boom Kickout	Muffler
Alarms Audible:	Coat Hook	Neutral Safety Start
Auto Brake	Cold Start Aid	Operator's Manual Box
Brake Fluid Level	Cup Holder	Radiator: Heavy Duty Plate Fin Type
Brake Oil Pressure	Downshift Button	Radiator Grille: Hinged
Engine Oil Pressure	Drawbar	Radio Ready
Alarms Visual:	Electrical System (24 Volt)	Reverse Alarm
Air Filter	Fan (Blower)	ROPS Cab:
Auto Brake	Fenders (Front & Rear)	Enclosed cab with sound suppression, front lights, front & rear wipers and washers, 2 rear view and 2 side mirrors, tinted glass, sliding side windows
Battery Discharge	Gauges:	Safety Locking Bar
Brake Fluid Level	Converter Oil Temperature	Seat (Super Deluxe, Adjustable, Suspension)
Brake Oil Pressure	Engine Water Temperature	Seat Belt, Retractable, 3" wide
Converter Oil Pressure	Fuel Level	Shift Control for Automatic Shift
Engine Oil Pressure	Hour Meter	Transmission Declutch Switch
Engine Water Temperature	Hydraulic Oil Level	Vandalism Protection
Parking Brake	Tachometer	Wrist Rest, Adjustable
Alternator: 75 amp Delco	Hoodsides (Hinged)	
Auto Brake	Horn (Electric)	
Belly Guard Protection for Engine	Indicators:	
Brake Line Protection (Front)	Declutch Function	
Brake (Parking)	High Beam	
Brakes (Service):	Parking Brake	
Oil/Oil Actuation	Transmission Switch Monitor	
Enclosed Wet Disc	Working Light	
Dual System	Lights:	
Bucket Control Lever	2 Front	
	2 Rear	

OPTIONAL EQUIPMENT

AM/FM Cassette Player	Counterweight	Hydraulic System, 3-Spool Valve
Belly Guard	Cushion Dump Valve	K-Lever Stick Steering
Bolt-On Cutting Edge Segments	Emergency Steering	Lighting System
Bucket Teeth	High Lift Arm	Turn Signal w/4 way flasher