

Kawasaki

95 Z^{IV}



Get What You Need

95 Z^{IV}

The new **95 Z^{IV}** offers everything you ever wanted in a wheel loader: productivity, durability, versatility. The **95 Z^{IV}** has it all ... including support you can rely on ... close to home.

More Than 30 Years of Quality Wheel Loaders

Kawasaki Construction Machinery Corp. of America, a division of Kawasaki Heavy Industries, is a leading supplier of a full range of high-quality wheel loaders. With over 30 years of proven performance history, Kawasaki wheel loaders have continuously evolved to bring you the best in equipment and support services, backed by a carefully selected dealer network.

Kawasaki articulated wheel loaders incorporate innovative design features coupled with extensive knowledge and experience gained from real-world applications. Kawasaki pioneered Z-Link design to provide unmatched utility, high breakout force and efficiency in its machines. Powered by proven emissions-compliant Cummins diesel engines, durability and serviceability are designed into every Kawasaki loader.

Kawasaki loaders are assembled at the company's modern manufacturing facilities in Newnan, GA. Service and support operations are headquartered in Kennesaw, GA.

A state-of-the-art parts distribution system links dealers with the main parts warehouse, allowing them to order parts directly. Qualified craftsmen rebuild components for all Kawasaki models at our fully equipped rebuild center, making component exchange easier and faster. An independent oil analysis program allows monitoring of critical systems to reduce unscheduled downtime.

The independent dealers that represent and support Kawasaki loaders are experts in their markets and are dedicated to providing you with the best service available. Together, we are committed to making your investment in a Kawasaki loader a sound business decision that will pay dividends for years to come.



In A Heavy-Duty Loader...

Improved Operator Comfort Means Greater Productivity

CAB

- Certified ROPS, FOPS
- Isolation-mounted to reduce vibration
- Doors latch back
- Side windows slide down
- Tinted windshields
- Front & rear wipers and washers

SEAT

- Best seat in the industry
- New six-way adjustable seat with lumbar support
- Heavy-duty suspension
- Side bolsters

CLIMATE CONTROL

- 25,000 BTU air conditioner available
- 40,000 BTU heater standard
- Pressurizer reduces dust, standard
- Touch pad controls



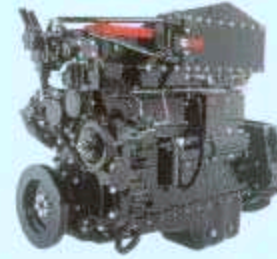
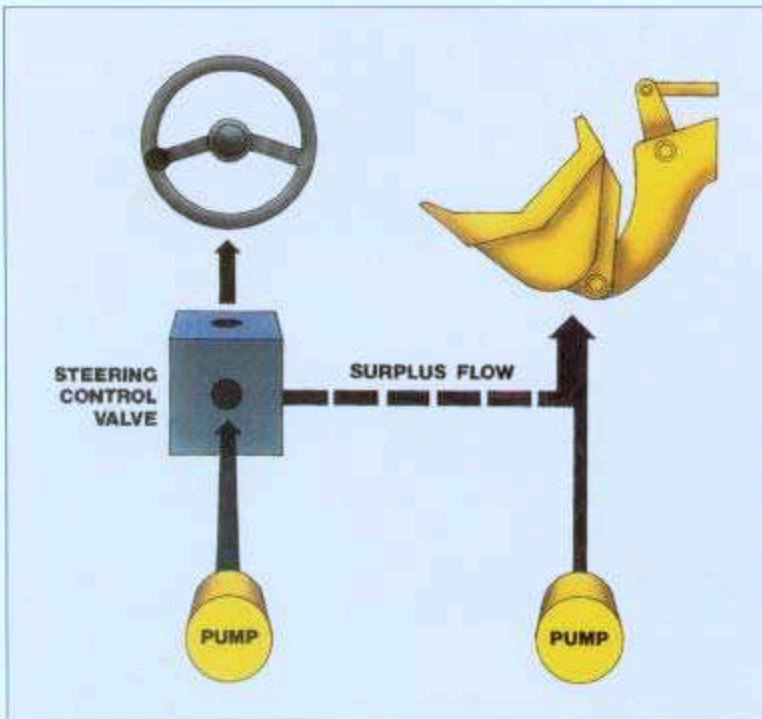
CONTROLS

- Dual, pilot-assisted hydraulic controls—fingertip control
- Adjustable wrist-rest
- Low-effort steering
- Tilt steering wheel adjusts to the operator's needs
- Single, twist-grip transmission shift lever
- Low profile dash improves visibility
- Gauges include tachometer
- Systems monitored with lights and alarms
- Transmission declutch switch activates left brake pedal as declutch

Kawasaki



Kawasaki Powertrain Components

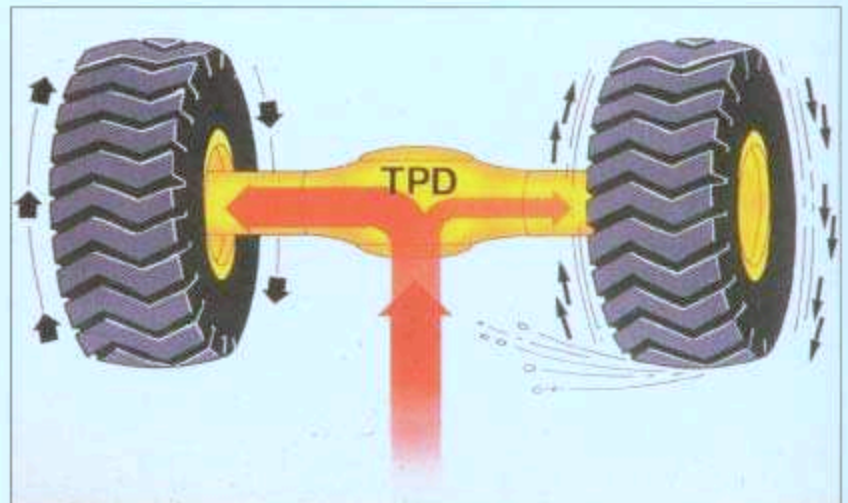


ENGINE

- Cummins N14-C
- 315 flywheel horsepower
- High torque, fuel efficient
- Cummins electrical components
- Reliable
- Worldwide distribution system

A HYDRAULIC SYSTEM DESIGNED FOR EFFICIENT PERFORMANCE

- Dry, reliable
- Cast iron gear pumps
- Energy efficient system, steering supplements main
- Easy access to two-spool control valve
- SAE flange type hoses
- Large oil reservoir — (keeps oil cooler)



AXLES

- Heavy-duty torque proportioning differentials
- Outboard-mounted final drives
- Improved rear axle trunnion sealing
- 29.5 x 25 22PR (L3) tires standard
- L4, L5 and radial tires available

95 Z

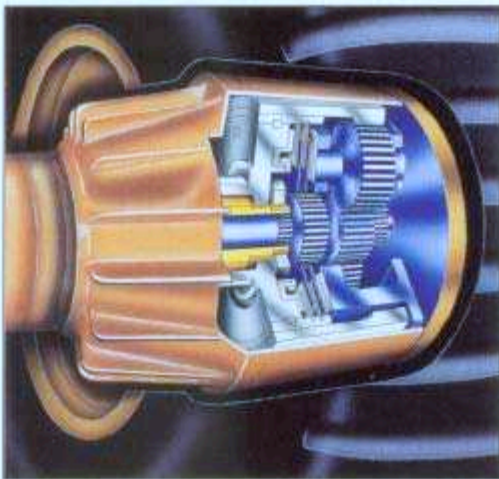
ments Offer Built-In Reliability



TRANSMISSION

- Four-speed, planetary powershift
- Heavy duty design increases reliability
- Automatic shift speeds cycles
- Autobrake prevents overspeeding
- Large, Standard SAE universal joints

Kawasaki



BRAKES

- Outboard wet disc brakes
- High capacity, dual system for safety
- Long life
- Unique design—mounted to low torque side
- Easy access—mounted directly behind planetaries
- Fewer brake discs needed
- Auto-adjusters maintain brake feel

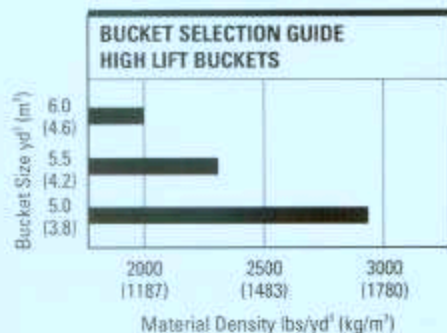
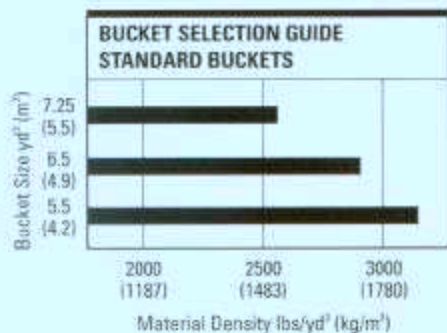
RIDE CONTROL (optional)

- Reduces bounce
- Speeds cycles
- Increased operator comfort
- Reduce spillage
- Load sensitive
- Automatic

Kawasaki 95Z Loaders Are Built

BUCKETS

- Rugged and durable buckets
- Box floor for rigidity
- Easy loading
- Excellent load retention
- Full assortment of edges and teeth
- Bolt-on wear plates standard



FRAME

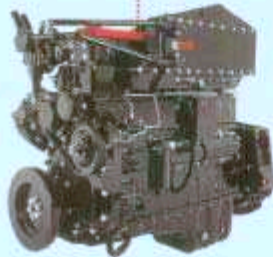
- Heavy, full box-section rear chassis
- Large center pins and bearings
- High strength loader tower

LIFT ARMS

- Heaviest in the class
- Unique dual Z-linkage spreads load and improves visibility
- Special triple-sealed lower bucket pins



It For Performance And Durability



Kawasaki Delivers Service and Support... Because You Just Don't Buy a Loader, You Live With It.

SERVICEABILITY

- Hinged radiator grille improves access
- Common key for ignition and vandalism covers
- Engine side covers open wide for better access to engine
- Donaldson & Fleetguard filters—easily accessible
- Remote engine oil and coolant drain
- Grease fittings are grouped for efficient lubrication
- Fusible link protects against electrical surges

SUPPORT

- Economical, effective, "KLEW" oil sampling system
- Factory rebuilt exchange program includes six month warranty
- Outstanding parts availability
- Extended powertrain warranty available
- Extensive qualified independent distribution network

95 Z

Kawasaki



Operating Specifica

ENGINE

Make/Model/Fuel Type	Cummins N14-C Diesel
Type	4-cycle, watercooled, turbocharged and after cooled, direct injection
Net flywheel horsepower	315HP/2100 RPM
Maximum torque	960 ft/lb @ 1400 RPM
Number of cylinders	6
Bore and stroke	5.5" x 6" (140mm x 152mm)
Total displacement	855 in ³ (14,010 cm ³)
Alternator	AC24V - 1800W (75 amp)
Starting motor	24V - 7.3kw (9.8HP)
Battery	12V - 200AH, 2 units
Governor	All-speed, mechanical type

TORQUE CONVERTER AND TRANSMISSION

Torque converter	3 elements, single stage, 1-phase
Torque stall ratio	3.08:1
Main clutches	Wet hydraulic, multi-disk type
Cooling method	Forced circulation type
Transmission	Full powershift, 4 forward, 3 reverse with automatic mode (2nd-4th) with downshift switch for 2nd - 1st downshifting. Autobrake protects transmission from overspeeding
Speeds - Forward	1st: 4.8 MPH (7.7km/hr) 2nd: 9.0 MPH (14.5km/hr) 3rd: 14.1 MPH (22.7 km/hr) 4th: 21.8 MPH (35.0 km/hr)
Speeds - Reverse	1st: 5.0 MPH (8.1 km/hr) 2nd: 9.5 MPH (15.3 km/hr) 3rd: 14.6 MPH (23.5 km/hr)

SERVICE REFILL CAPACITY

LOCATION	CAPACITY:	Gallons	Liters
Engine (coolant)		22.5	(85)
Fuel tank (diesel fuel)		107.0	(405)
Engine oil (oil pan)		11.4	(43)
Front axle (gear oil)		26.4	(100)
Rear axle (gear oil)		26.4	(100)
Torque converter and transmission (engine oil)		17.2	(65)
Hydraulic system (including tank hydraulic oil)		69.0	(260)
Brake oil tank (engine oil)		1.2	(4.7)

HYDRAULIC AND STEERING SYSTEM

Steering type	Articulated frame steering	
Steering mechanism	Hydraulic power steering unit pilot operated type	
Lift (boom) cylinder	Two (2) double-acting piston type 7.48" x 37.52" (190mm x 953mm)	
Tilt (bucket) cylinder	Two (2) double-acting piston type 6.3" x 23.82" (160mm x 605mm)	
Steering cylinder	Two (2) double-acting piston type 3.54" x 23.62" (90mm x 600mm)	
Steering oil pump	Gear type: 73 GPM @ 2100 RPM (273 LPM @ 2100 RPM)	
Main oil pump	Gear type: 50 GPM @ 2100 RPM (190 LPM @ 2100 RPM)	
Pilot oil pump	Gear type: 21.8 GPM @ 2100 RPM (82.8 LPM @ 2100 RPM)	
Relief valve set pressure	Loading	3000 psi (210 kg/cm ²)
	Steering	3000 psi (210 kg/cm ²)
HYDRAULIC CYCLE TIME*		
Lifting time (at full load)	7.0 sec.	
Lowering time (empty)	4.0 sec.	
Bucket dumping time	1.5 sec.	
TOTAL	12.5 sec.	

* Measured in accordance with SAE J732C


AXLE SYSTEM

Drive system	4-wheel drive	
Front and rear axle	Full floating banjo type	
Tires	Standard	29.5 x 25-22PR (L-3)
	Optional	29.5 x 25-22PR (L-4) (L-5) 26.5 x 25-24PR (L-3) (L-4) (L-5) 26.5-R25 26.5-R25
Reduction and differential gear	Spiral bevel gear, 1 stage reduction torque proportioning	
Final reduction gear	Outboard mounted, internal planetary gear	
Oscillation angle	±13° (total 26°)	


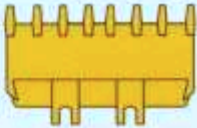
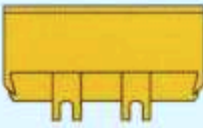
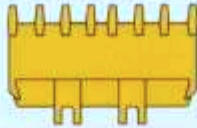
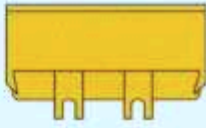
BRAKE SYSTEM

Service brakes	4 wheel, adjustment-free, wet multiple disk brake, controlled by full hydraulic system. Dual circuit
Parking/Emergency brake	Spring applied air released and oil applied accumulator type, located in front driveline.

Specifications and Bucket Data

			Standard Boom						
			General Purpose		Rock Straight		Rock-V-Edge		Light Material
			Straight Edge With Bolt-on Cutting Edge	Straight Edge With Teeth	Straight Edge Without Teeth	Straight Edge With Teeth	Spade Nose Edge Without Teeth	Spade Nose With Teeth	Straight Edge With Bolt-on Cutting Edge
Capacity	Heaped	yd ³ (m ³)	6.5 (5.0)	6.3 (4.7)	5.5 (4.2)	5.5 (4.2)	5.5 (4.2)	5.5 (4.2)	7.25 (5.5)
	Struck	yd ³ (m ³)	5.5 (4.2)	5.4 (4.1)	4.7 (3.6)	4.7 (3.6)	4.7 (3.6)	4.7 (3.6)	6.1 (4.6)
Maximum dumping clearance		ft-in (mm)	10'6 ¹ / ₄ " (3220)	10'2 ¹ / ₄ " (3105)	10'10 ¹ / ₈ " (3320)	10'2" (3100)	10'4 ¹ / ₈ " (3165)	9'8 ¹ / ₈ " (2970)	10'4 ¹ / ₄ " (3189)
Dumping reach (to front of bucket edge or tooth)		ft-in (mm)	4'5 ¹ / ₈ " (1350)	4'7 ¹ / ₈ " (1420)	4'3" (1295)	4'8 ¹ / ₈ " (1425)	4'9 ¹ / ₈ " (1450)	5'1" (1550)	5'2 ¹ / ₄ " (1595)
Bucket hinge pin height		ft-in (mm)	14'8 ¹ / ₈ " (4490)	14'8 ¹ / ₄ " (4490)	14'8 ¹ / ₄ " (4490)	14'8 ¹ / ₄ " (4490)	14'8 ¹ / ₄ " (4490)	14'8 ¹ / ₄ " (4490)	14'8 ¹ / ₄ " (4490)
Digging depth		ft-in (mm)	3'1 ¹ / ₈ " (80)	4'1 ¹ / ₄ " (110)	1'1 ¹ / ₈ " (50)	4'1 ¹ / ₄ " (110)	1'1 ¹ / ₈ " (50)	4'1 ¹ / ₄ " (110)	3'1 ¹ / ₄ " (80)
Breakout force		lb (kg)	54,670 (24,800)	59,080 (26,800)	59,080 (26,800)	59,080 (26,800)	55,780 (25,300)	55,780 (25,300)	49,750 (22,570)
Bucket tilt-back angle	at ground level		43°	43°	43°	43°	43°	43°	43°
	at carry position		51°	51°	51°	51°	51°	51°	51°
Overall	Length	ft-in (mm)	30'2 ¹ / ₈ " (9210)	30'7 ¹ / ₂ " (9330)	29'9 ¹ / ₄ " (9085)	30'8" (9345)	30'6 ¹ / ₈ " (9310)	31'2 ¹ / ₈ " (9520)	30'5 ¹ / ₈ " (9290)
	Height	ft-in (mm)	12'8 ¹ / ₈ " (3870)	12'8 ¹ / ₈ " (3870)	12'8 ¹ / ₈ " (3870)	12'8 ¹ / ₈ " (3870)	12'8 ¹ / ₈ " (3870)	12'8 ¹ / ₈ " (3870)	12'8 ¹ / ₈ " (3870)
	Width (outside tire)	ft-in (mm)	10'6" (3200)	10'6" (3200)	10'6" (3200)	10'6" (3200)	10'6" (3200)	10'6" (3200)	10'6" (3200)
	Width (outside bucket)	ft-in (mm)	11'3 ¹ / ₈ " (3450)	11'4 ¹ / ₂ " (3465)	11'3 ¹ / ₈ " (3450)	11'4 ¹ / ₂ " (3465)	11'3 ¹ / ₈ " (3450)	11'4 ¹ / ₂ " (3465)	11'3 ¹ / ₈ " (3450)
Wheel base		ft-in (mm)	11'8 ¹ / ₈ " (3560)	11'8 ¹ / ₈ " (3560)	11'8 ¹ / ₈ " (3560)	11'8 ¹ / ₈ " (3560)	11'8 ¹ / ₈ " (3560)	11'8 ¹ / ₈ " (3560)	11'8 ¹ / ₈ " (3560)
Minimum turning radius	at outside bucket	ft-in (mm)	23'10 ¹ / ₂ " (7275)	24'1 ¹ / ₄ " (7320)	23'8 ¹ / ₈ " (7235)	24'1 ¹ / ₄ " (7320)	23'8 ¹ / ₈ " (7235)	24'1 ¹ / ₄ " (7320)	24'1 ¹ / ₄ " (7325)
	at center of outside tire	ft-in (mm)	20'1 ¹ / ₄ " (6100)	20'1 ¹ / ₄ " (6100)	20'1 ¹ / ₄ " (6100)	20'1 ¹ / ₄ " (6100)	20'1 ¹ / ₄ " (6100)	20'1 ¹ / ₄ " (6100)	20'1 ¹ / ₄ " (6100)
Minimum ground clearance		ft-in (mm)	1'7 ¹ / ₈ " (500)	1'7 ¹ / ₈ " (500)	1'7 ¹ / ₈ " (500)	1'7 ¹ / ₈ " (500)	1'7 ¹ / ₈ " (500)	1'7 ¹ / ₈ " (500)	1'7 ¹ / ₈ " (500)
Full articulation angle		degree	40°	40°	40°	40°	40°	40°	40°
Operating weight (with ROPS Cab)		lb (kg)	63,670 (28,880)	63,290 (28,710)	64,180 (29,110)	64,680 (29,340)	64,450 (29,240)	64,970 (29,470)	64,575 (29,290)
Static Tipping Load (with ROPS cab)	Straight	lb (kg)	48,680 (22,080)	49,080 (22,260)	48,020 (21,780)	47,510 (21,550)	47,310 (21,460)	46,800 (21,230)	47,220 (21,420)
	Full turn	lb (kg)	40,930 (18,320)	40,760 (18,490)	39,730 (18,020)	39,220 (17,790)	39,090 (17,730)	38,580 (17,500)	39,700 (18,010)

The weight and load figure includes optional counterweight, Enclosed ROPS Cab, 29.5x25-22PR (L-3) tires, Full fuel tank and operator.

			High Lift Boom			
			Rock-V-Edge		Rock-Straight	General Purpose
			With Teeth	Without Teeth	With Teeth	With Bolt-on Cutting Edge
						
Capacity	Heaped	yd ³ (m ³)	5.0 (3.8)	5.0 (3.8)	5.0 (3.8)	5.5 (4.2)
	Struck	yd ³ (m ³)	4.2 (3.2)	4.2 (3.2)	4.2 (3.2)	4.7 (3.6)
Maximum dumping clearance		ft-in (mm)	11'4 1/4" (3460)	11'11 1/8" (3650)	11'9 1/4" (3590)	12'2" (3710)
Dumping reach (to front of bucket edge or tooth)		ft-in (mm)	4'11 1/8" (1515)	4'7 7/8" (1420)	4'6 1/4" (1390)	4'3 1/8" (1305)
Bucket hinge pin height		ft-in (mm)	16 7/8" (4900)	16 7/8" (4900)	16 7/8" (4900)	16 7/8" (4900)
Digging depth		ft-in (mm)	4 1/2" (115)	1 7/8" (50)	4 1/2" (115)	3 3/4" (85)
Breakout force		lb (kg)	63,230 (28,680)	63,230 (28,680)	65,260 (29,600)	60,160 (27,290)
Bucket tilt-back angle	at ground level		43°	43°	43°	43°
	at carry position		51°	51°	51°	51°
Overall	Length	ft-in (mm)	31'9 1/2" (9690)	31'1 1/4" (9480)	31'6 1/8" (9605)	31' 1/2" (9460)
	Height	ft-in (mm)	12'8 3/4" (3870)	12'8 3/4" (3870)	12'8 3/4" (3870)	12'8 3/4" (3870)
	Width (outside tire)	ft-in (mm)	10'6" (3200)	10'6" (3200)	10'6" (3200)	10'6" (3200)
	Width (outside bucket)	ft-in (mm)	11'4 1/2" (3465)	11'3 1/4" (3450)	11'4 1/2" (3465)	11'3 1/4" (3450)
Wheel base		ft-in (mm)	11'8 1/4" (3560)	11'8 1/4" (3560)	11'1 1/8" (3400)	11'8 1/4" (3560)
Minimum turning radius	at outside bucket	ft-in (mm)	24'6 1/4" (7490)	24'3 3/4" (7410)	23' 3/8" (7020)	24'5 1/4" (7450)
	at center of outside tire	ft-in (mm)	20' 1/4" (6100)	20' 1/4" (6100)	19' 3/8" (5800)	20' 1/4" (6100)
Minimum ground clearance		ft-in (mm)	1'7 3/8" (500)	1'7 3/8" (500)	20' 1/4" (515)	1'7 3/8" (500)
Full articulation angle		degree	40°	40°	40°	40°
Operating weight (with ROPS Cab)		lb (kg)	64,950 (29,460)	64,440 (29,230)	48,655 (20,070)	63,650 (28,870)
Static Tipping Load (with ROPS cab)	Straight	lb (kg)	39,260 (17,810)	39,770 (18,040)	29,100 (13,200)	40,630 (18,430)
	Full turn	lb (kg)	32,410 (14,700)	39,920 (14,930)	24,690 (11,200)	37,750 (15,310)

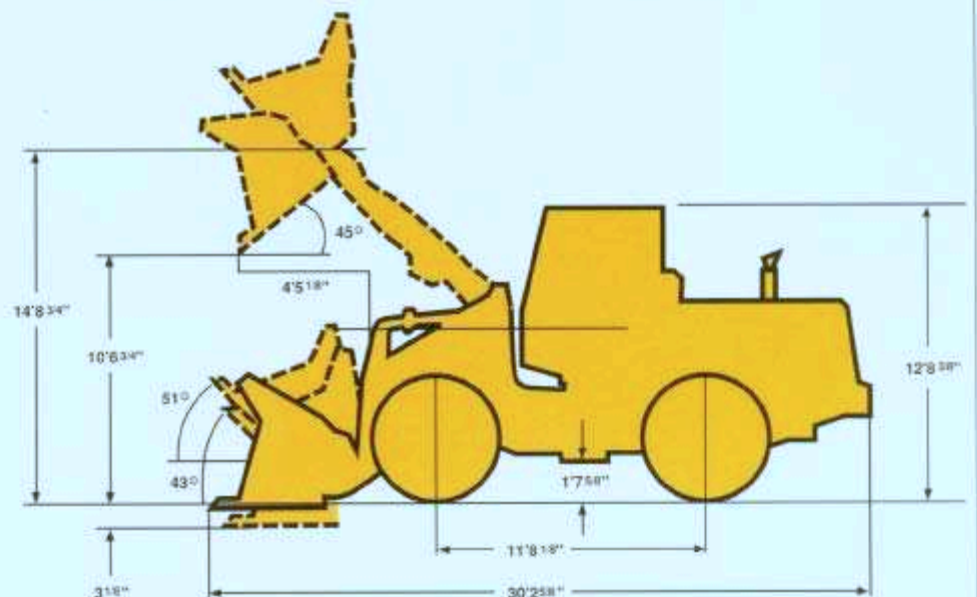
tions and Equipment Data

WEIGHTS AND DIMENSIONS (SUPPLEMENTAL DATA)

	lb (kg)	Operating Weight	Tipping Load		in (mm)	Overall Width (Outside Tire)	Tread	Vertical Dimensions	Overall Length
			Straight	Full Turn					
ROPS Canopy (Instead of ROPS Cab)	lb (kg)	-790 (-360)	-710 (-320)	-680 (-310)	in (mm)				
Remove ROPS Canopy and Cab (for transport only)	lb (kg)	-2160 (-980)			in (mm)		-1'11 1/2" (-605)		
Counter Weight	lb (kg)	+730 (+330)	+1830 (+830)	+1520 (+690)	in (mm)				
Air conditioner	lb (kg)	+220 (+100)	+200 (+90)	+200 (+90)	in (mm)				
Belly Guard (Rear Frame)	lb (kg)	+220 (+100)	+240 (+110)	+220 (+100)	in (mm)				
Tires: 26.5-25-24PR (L-3)	lb (kg)	-930 (-420)	-710 (-320)	-620 (-280)	in (mm)	-3 1/8" (-90)	-2" (-50)	+1 1/8" (+40)	
26.5-25-24PR (L-4)	lb (kg)	-45 (-20)	-45 (-20)	-22 (-10)	in (mm)	-2 3/8" (-60)	-3/8" (-20)	+7/8" (+20)	
26.5-25-24PR (L-5)	lb (kg)	+1260 (+570)	+950 (+430)	+840 (+380)	in (mm)	-2 3/8" (-60)	-3/8" (-10)	+7/8" (+10)	
29.5-25-22PR (L-4)	lb (kg)	+1610 (+730)	+1215 (+550)	+1080 (+490)	in (mm)	+3/8" (+10)	+1 7/8" (+35)	-1 1/2" (-30)	
29.5-25-22PR (L-5)	lb (kg)	+2380 (+1080)	+1810 (+820)	+1590 (+720)	in (mm)	+3/8" (+10)	+1 1/8" (+40)	-1 1/8" (-40)	
26.5-25-24PR (L-3) (75% CaCl ₂)	lb (kg)	+2160 (+980)	+3990 (+1810)	+3530 (+1600)	in (mm)	-3 3/8" (-90)	-2" (-50)	+1 1/8" (+40)	
29.5-25-22PR (L-3) (75% CaCl ₂)	lb (kg)	+4190 (+1900)	+6370 (+2890)	+5620 (+2550)	in (mm)				

Base Tire 29.5-25-22PR (L-3)

Tread 7' 11" (2420mm)
 Width (outside tire) 10' 6" (3200mm)
 Width (outside bucket) 11' 3 3/4" (3450mm)
 Equipped with GSC bucket with bolt on cutting edge
 29.5-25-22PR (L-3) Tire and ROPS Cab



95 Z^{IV}



Kawasaki
KAWASAKI CONSTRUCTION MACHINERY
 CORP. OF AMERICA

2140 Barrett Park Drive, Suite 101
 Kennesaw, GA 30144
 Tel: (770) 499-7000
 Fax: (770) 421-6842

STANDARD EQUIPMENT

Adjustable Steering Column	Bucket Leveler	Lights: 2 Front 2 Rear 2 Stop/Tail
Air Cleaner (Double element Donaldson with Precleaner)	Boom Kickout	Linkage (Dual Z-type sealed)
Alarms Audible: Auto Brake Brake Fluid Level Brake Oil Pressure Engine Oil Pressure Transmission Control	Coat Hook	Muffler
Alarms Visual: Air Filter Auto Brake Battery Discharge Brake Fluid Level Brake Oil Pressure Converter Oil Pressure Engine Oil Pressure Engine Water Pressure Parking Brake Transmission Control	Cold Start Aid	Neutral Safety Start
Alternator: 75 amp Delco	Cup Holder	Operators Manual Box
Auto Brake:	Downshift Button	Radiator: Heavy Duty Plate Fin Type
Brake (Parking)	Drawbar	Radiator Grille, Hinged
Brake Line Protection (Front)	Electrical System (24 Volt)	Radio Ready
Brakes (Service): Oil/Oil Actuation Enclosed Wet Disc Dual System	Engine Coolant Expansion Tank	Reverse Alarm
Bucket Control Lever (Dual, Pilot Assisted)	Fan (Blower)	ROPS Cab: Enclosed cab with sound sup- pression, front lights, front & rear wipers and washers, 2- rear view and 2 side mirrors, tinted glass, sliding side win- dows
	Fenders (Front & Rear)	Safety Locking Bar
	Gauges: Converter Oil Temperature Engine Water Temperature Fuel Level Hour Meter Hydraulic Oil Level Tachometer	Seat (Super Deluxe, Adjustable, Suspension)
	Heater/Pressurizer (40,000 BTU)	Seat Belt, Retractable, 3" wide
	Hoodsides (Hinged)	Shift Control for Automatic Shift
	Horn (Electric)	Torque Proportioning Differential
	Indicators: High Beam Parking Brake Transmission Switch Monitor Working Light	Transmission Declutch Switch
		Vandalism Protection
		Wrist Rest, Adjustable

OPTIONAL EQUIPMENT

Air Conditioner (R134 Refrigerant)	Bucket Teeth	High Lift Arm	Lighting System
AM/FM Cassette Player	Counterweight	Hydraulic System, 3-Spool Valve	Rear Cab Light
Belly Guard	Cushion Dump Valve	K-Lever Stick Steering	Turn Signal w/4 way flasher
Bolt-On Cutting Edge Segments	Emergency Steering (Special Option)		