

# 95ZIII





# 95ZIII

## SUMMARY OF FEATURES

- The reliable, fuel efficient Cummins NTA-855 turbocharged engine supplies a big 310 HP.
- Z-type linkage for high breakout force and easy digging in tough materials.
- Dual bucket cylinders for excellent visibility to the bucket plus distribution of loads evenly across the torque tube.
- High tipping loads for excellent stability.
- Large 29.5 x 25 tire provides excellent flotation and high load capacity.
- Safety features include seat belt, separate brake systems front and rear, emergency brake, major component monitor system, reverse alarm, neutral start and optional emergency steering.
- Operator features include adjustable steering column, single twist grip transmission lever, wrist rest, fingertip hydraulic controls, isolated/sound suppressed cab, optional air conditioner/heater, suspension seat, bucket leveler and boom kickout.
- Service features include sealed linkage pins, remote mounted grease fittings, SAE hydraulic hoses, spin on engine and fuel filter, multiple use of common hoses, hinged hoodsides and special tool kit.
- Wet disc brakes offer protection from external contamination, longer life and excellent braking capacity.
- KLEW - Kawasaki Loaders Early Warning Oil Analysis program measures wear metals and contaminants in the oil to monitor wear rates of major components. This sophisticated test allows overhauls to be scheduled to reduce downtime and costs.

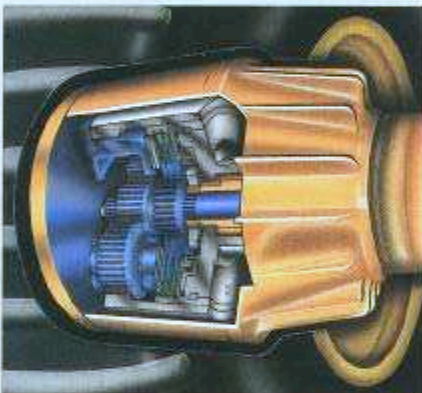


## CUMMINS ENGINE

The state-of-the-art Cummins NTA-855 turbocharged diesel provides a big 310 flywheel horsepower. With outstanding torque characteristics; this engine also offers excellent fuel economy. The turbo-charger permits efficient operation at high altitude or high ambient conditions. Reliable Delco Remy electrical components make service easy. Ether cold start is standard. Resilient engine mounts reduce vibration and noise. Two stage Donaldson air cleaner protects the engine.

## WET DISC BRAKES

The 95ZIII wet disc brakes offer excellent capacity, protection and long life. Mounted in each wheel are the multiple, sintered alloy clutches that offer excellent heat capacity and rotate to provide greater cooling. The clutches are



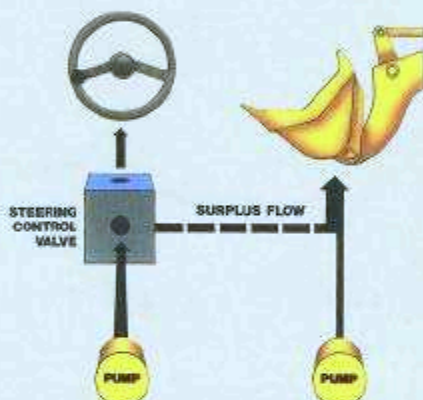
mounted on the low-torque, input side of the planetary. This permits the use of fewer parts and easier accessibility to reduce overhaul time.

## PLANETARY TRANSMISSION WITH S.C.U.

The big four-speed transmission offers excellent performance and reliability. Speed selection is made easy by the Shift Control Unit (S.C.U.) which allows four options: Hold in First, Hold in Second, Automatic 1-2, Automatic 1-2-3-4. The single twist grip shift lever allows the operator to select the speed range best suited to the job. The S.C.U. insures proper shifting to protect the transmission and extend service life.

## ENERGY EFFICIENT HYDRAULICS

The ZIII series loaders all incorporate energy efficient hydraulics. The unused steering fluid is utilized by the loading circuit. This gives excellent performance with low horsepower drain. The 95ZIII tank is pressurized to keep hydraulic oil cleaner, longer. The large system capacity reduces oil temperature and heat on hoses, seals and other components. This adds life, keeping the 95ZIII dry longer. To insure these high standards of quality, Kawasaki extensively tests each loader.



## AUTO BRAKE

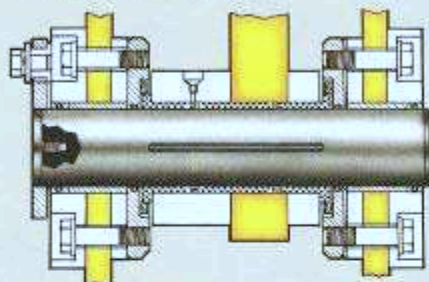
The S.C.U. also has an Auto Brake feature for protection against transmission overspeeding. If overspeeding conditions exist the Auto Brake senses the condition, partially applies the service brakes and shifts the transmission to neutral until a proper speed for the gear range is achieved.





## SEALED PINS

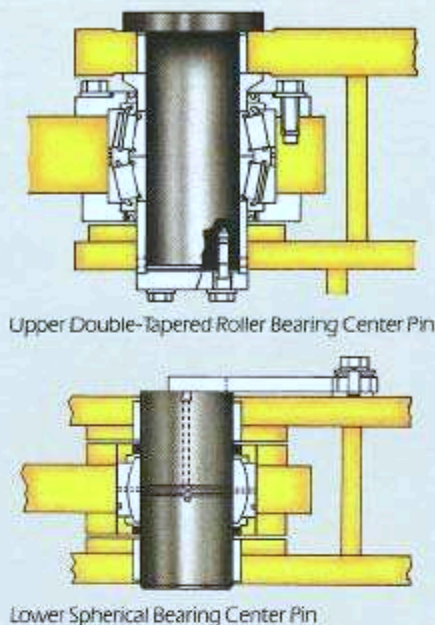
The lower bucket hinge pins use a patented design triple seal on each end of the pin to insure that dirt cannot enter. This pin uses grease as a lubricant rather than oil to provide greater durability and longer life. All other linkage pins use conventional lip type seals to retain grease and extend service life. Service interval for all pins is 100 hours.



Lower Bucket Hinge Pin

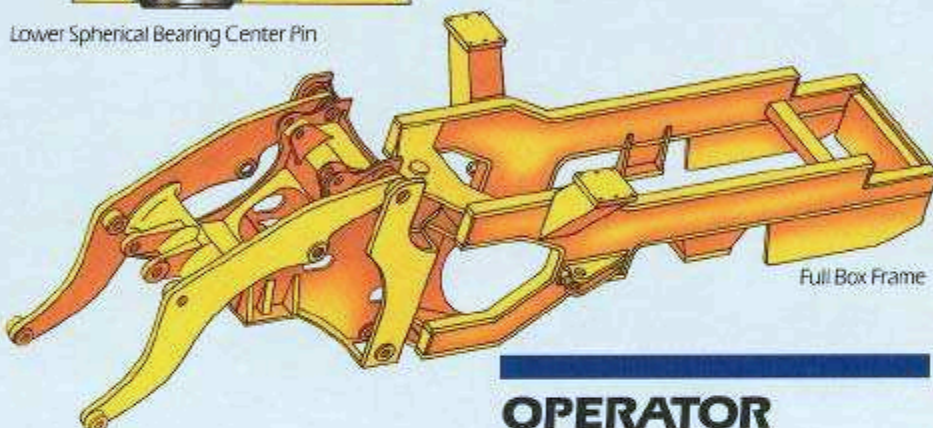
## DUAL Z-LINKAGE

The Z-linkage provides high breakout force for digging tough material. The 50° bucket rollback permits carrying the full load without spillage. The dual tilt cylinders spread the load more evenly across the torque tube and provide a clear line of sight to the bucket.



Upper Double-Tapered Roller Bearing Center Pin

Lower Spherical Bearing Center Pin



Full Box Frame

## TOUGH STRUCTURES

The 95ZIII is built to handle the tough jobs. The solid lift arms are made from high strength alloy steel for excellent durability. The large center pins are supported by massive structures and use tapered roller bearings and spherical bearings to handle the load in this critical area. The rear frame is a heavy full-box section frame to provide long, trouble-free service.

## OPERATOR COMFORT

The roomy ROPS cab is rubber mounted, reducing both vibration and sound levels to 82 dBA. The cab is well equipped with tinted glass, sliding windows, front and rear wipers and washers, defroster fan, available floor mounted heater/air conditioner, and exterior and interior rear view mirrors. Operator comfort is further enhanced by a 3-way adjustable suspension seat, pilot operated fingertip hydraulic controls, wrist rest and adjustable steering column. Bucket cylinder design results in excellent bucket visibility, and the bucket leveler and boom kick-out reduce fatigue and quicken cycle time.

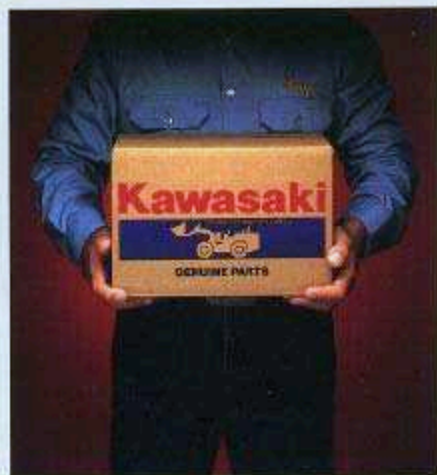
## SERVICEABILITY FEATURES

To insure proper efficient servicing, the Kawasaki 95ZIII offers many features. All grease fittings are located for easy access. Convenient panels and hinged hood sides along with spin-on engine, oil and fuel filters make routine service checks simple. All flange fittings use SAE threads for easy, convenient replacement. Most of the hoses are used in several locations, allowing a minimal stock of hoses to support the entire machine. A special tool kit is standard.





## KAWASAKI ZIII SUPPORT



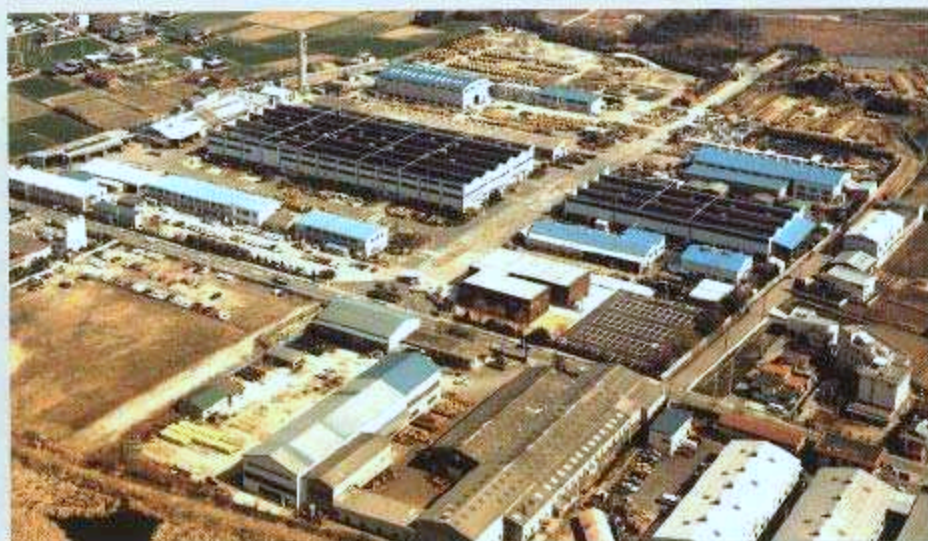
### KAWASAKI'S PDO

Kawasaki understands the need for timely delivery of parts to any of its users. To provide an unsurpassed level of service in this area, Kawasaki maintains an extremely high level of parts availability and fast response from our parts distribution network and dealers.



### KAWASAKI LOADERS MANUFACTURING CORP., USA

The Kawasaki commitment has been further demonstrated with the establishment of Kawasaki Loaders Manufacturing Corp., USA (KLMC). This new factory, located southwest of Atlanta, is dedicated to providing the same high quality product Kawasaki has become known for. The outstanding support we offer through dedicated independent dealers completes this commitment to you.



### KAWASAKI HISTORY

The dependable Kawasaki loader is manufactured by Kawasaki Heavy Industries. Kawasaki is a large industrial manufacturer of ships, aircraft, locomotives, robots, plants, hydraulic components, and motorcycles, as well as a variety of construction equipment. The first Kawasaki articulated loader was manufactured in 1962, making Kawasaki a true pioneer in the loader market. Kawasaki loaders are sold in over 100 countries and Kawasaki is one of the largest loader manufacturers in the world today.



## OPERATING SPECIFICATIONS

# 95ZIII

### ENGINE

Make/Model/Fuel type	CUMMINS/NTA-855-C 335/Diesel
Type	4 cycle, watercooled, turbo-charged, & after cooled, direct injection
Net flywheel horsepower	310 HP/2100 rpm
Max Torque	1,005 lb. ft. (139 kg.m.)/1400 rpm
Number of cylinders	6
Bore and stroke	5.5" x 6" (140mm x 152mm)
Total Displacement	855 in <sup>3</sup> (14,010cm <sup>3</sup> )
Alternator	AC24V - 1,800 W (75 AMP)
Starting motor	24V - 7.5KW (10.1 HP)
Battery	12V - 200 Ah, 2 units
Governor	all speed, mechanical type

### TORQUE CONVERTER AND TRANSMISSION SPECIFICATIONS

Torque converter	three elements, single stage, 1-phase
Torque stall ratio	2.6:1
Main clutch	wet hydraulic, multi-disk type
Cooling method	forced circulation type
Transmission	full power shift, 4 forward, 3 reverse
Forward	1st: 4.6 MPH (7.5 km/hr) 2nd: 9.1 MPH (14.5 km/hr) 3rd: 14.0 MPH (22.6 km/hr) 4th: 22.7 MPH (36.6 km/hr)
Reverse	1st: 5.1 MPH (8.2 km/hr) 2nd: 9.4 MPH (15.1 km/hr) 3rd: 15.1 MPH (24.2 km/hr)

### SERVICE REFILL CAPACITY

LOCATION	CAPACITY	Gal	(Lit)
Engine (Coolant)		22.5	(85)
Fuel Tank		107.0	(405)
Engine (Oil pan)		11.4	(43)
Front axle		26.4	(100)
Rear axle		26.4	(100)
Torque converter and transmission		17.2	(65)
Hydraulic system (including tank)		108.0	(410)
Brake oil tank		0.9	(3.5)

### HYDRAULIC AND STEERING SYSTEM

Type	articulated frame steering
Steering Mechanism	hydraulic power steering unit pilot operated type
Lift (boom) cylinder	two (2) double-acting piston type: φ 7.48" x 37.52" (φ 190mm x 953mm)
Tilt (bucket) cylinder	two (2) double-acting piston type: φ 6.3" x 23.82" (φ 160mm x 605mm)
Steering cylinder	two (2) double-acting piston type: φ 3.54" x 23.62" (φ 90mm x 600mm)
Steering oil pump	gear type: 73 GPM/1000psi @ 2100 rpm (275 LPM/70 kg/cm <sup>2</sup> @ 2100 rpm)
Main pump	gear type: 50 GPM/1000psi @ 2100 rpm (190 LPM/70 kg/cm <sup>2</sup> @ 2100 rpm)
Relief set pressure	Loading 3000 psi (210 kg/cm <sup>2</sup> ) Steering 3000 psi (210 kg/cm <sup>2</sup> )
HYDRAULIC CYCLE TIME*	
Lifting time (at full load)	7.3 sec
Lowering time (empty)	3.5 sec
Bucket dumping time	1.7 sec
TOTAL	12.5 sec

\*Measured in accordance with SAE J1732C.

### AXLE SYSTEM

Drive system	4-wheel drive
Front and rear axle	full floating banjo type
Tires Standard	29.5-25-22PR (L-3) 29.5-25-22PR (L-4, L-5) 26.5-25-24PR (L-3, L-4, L-5)
Reduction and differential gear	spiral bevel gear, 1 stage reduction torque proportioning
Final reduction gear	outboard mounted, internal planetary gear
Oscillation angle	± 13° (total 26°)

### BRAKE SYSTEM

Service brakes	4-wheel, adjustment-free, wet multiple disk brake, controlled by full hydraulic system
Parking brake	spring applied oil pressure released type, located on front drive shaft
Emergency brake	same as parking, applying on failure in brake control line



# OPERATING SPECIFICATIONS / BUCKET DATA

## 95ZIII STANDARD BOOM



			General Purpose		Rock Straight		Rock-V-Edge	
			Straight Edge With Bolt on Cutting Edge	Straight Edge With Teeth	Straight Edge Without Teeth	Straight Edge With Teeth	Spade Nose Edge Without Teeth	Spade Nose With Teeth
Capacity	Heaped	yd <sup>3</sup> (m <sup>3</sup> )	6.5 (4.9)	6.25 (4.7)	5.5 (4.2)	5.5 (4.2)	5.5 (4.2)	5.5 (4.2)
	Struck	yd <sup>3</sup> (m <sup>3</sup> )	5.5 (4.2)	5.4 (4.1)	4.7 (3.6)	4.7 (3.6)	4.7 (3.6)	4.7 (3.6)
Maximum Dumping Clearance		ft-in (mm)	10'6" (3200)	10'1 1/4" (3080)	10'9 1/16" (3300)	10'1 1/4" (3080)	10'3 7/8" (3140)	9'8 1/8" (2950)
Dumping Reach (to front of bucket edge or teeth)		ft-in (mm)	4'5 1/8" (1355)	4'8 1/16" (1440)	4'3 7/16" (1310)	4'8 1/16" (1440)	4'9 1/8" (1470)	5'1 1/8" (1565)
Bucket Hinge Pin Height		ft-in (mm)	14'8" (4470)	14'8" (4470)	14'8" (4470)	14'8" (4470)	14'8" (4470)	14'8" (4470)
Digging Depth		ft-in (mm)	3 1/4" (95)	4 1/16" (125)	2 7/8" (60)	4 1/16" (125)	2 7/8" (60)	4 1/16" (125)
Breakout Force		lb (kg)	52,450 (23,790)	56,660 (25,700)	56,660 (25,700)	56,660 (25,700)	53,330 (24,190)	53,330 (24,190)
Bucket tilt- back angle	(at ground level)		42°	42°	42°	42°	42°	42°
	(at carry position)		50°	50°	50°	50°	50°	50°
Overall	Length	ft-in (mm)	29'4 1/16" (8955)	29'10 1/4" (9100)	29'5 1/8" (8855)	29'10 1/16" (9105)	29'9 1/8" (9075)	30'5 1/16" (9285)
	Height	ft-in (mm)	12'7 15/16" (3860)	12'7 15/16" (3860)	12'7 15/16" (3860)	12'7 15/16" (3860)	12'7 15/16" (3860)	12'7 15/16" (3860)
	Width (Outside Tire)	ft-in (mm)	10'5 7/16" (3190)	10'5 7/16" (3190)	10'5 7/16" (3190)	10'5 7/16" (3190)	10'5 7/16" (3190)	10'5 7/16" (3190)
	Width (Outside Bucket)	ft-in (mm)	11'3 1/8" (3450)	11'4 1/8" (3465)	11'3 1/8" (3450)	11'4 1/8" (3465)	11'3 1/8" (3450)	11'4 1/8" (3465)
Wheel Base		ft-in (mm)	11'8 1/8" (3560)	11'8 1/8" (3560)	11'8 1/8" (3560)	11'8 1/8" (3560)	11'8 1/8" (3560)	11'8 1/8" (3560)
Min. Turning Radius	at outside bucket	ft-in (mm)	23'10 1/2" (7275)	24' 1/8" (7320)	23'8 7/8" (7235)	24' 1/8" (7320)	23'8 7/8" (7235)	24' 1/8" (7320)
	at center of outside tire	ft-in (mm)	20' 1/4" (6100)	20' 1/4" (6100)	20' 1/4" (6100)	20' 1/4" (6100)	20' 1/4" (6100)	20' 1/4" (6100)
Minimum Ground Clearance		ft-in (mm)	1'7 1/16" (490)	1'7 1/16" (490)	1'7 1/16" (490)	1'7 1/16" (490)	1'7 1/16" (490)	1'7 1/16" (490)
Full Articulation Angle		degree	40°	40°	40°	40°	40°	40°
Operating Weight (with ROPS cab)		lb (kg)	62,410 (28,305)	62,030 (28,135)	62,940 (28,550)	63,410 (28,760)	63,230 (28,680)	63,690 (28,890)
Static Tipping Load (with ROPS cab)	Straight	lb (kg)	44,580 (20,220)	45,020 (20,420)	44,360 (20,120)	43,700 (19,820)	43,920 (19,920)	43,260 (19,620)
	Full Turn	lb (kg)	38,100 (17,280)	38,540 (17,480)	37,880 (17,180)	37,440 (16,980)	37,660 (17,080)	37,000 (16,780)

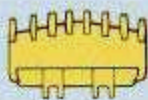

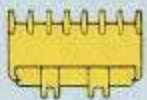

The Weight and Load figure include Enclosed ROPS Cab, 29.5-25-22PR (L-3) tires, full fuel tank and operator. Measured in accordance with SAE J732C and J742C.



# OPERATING SPECIFICATIONS / BUCKET DATA

## 95ZIII HIGH LIFT BOOM



			Rock-V-Edge		Rock-Straight	General Purpose
			With Teeth	w/o Teeth	With Teeth	With Bolt on Cutting Edge
						
Capacity	Heaped	yd <sup>3</sup> (m <sup>3</sup> )	5.0 (3.8)	5.0 (3.8)	5.0 (3.8)	5.5 (4.2)
	Struck	yd <sup>3</sup> (m <sup>3</sup> )	4.2 (3.2)	4.2 (3.2)	4.2 (3.2)	4.6 (3.5)
Maximum Dumping Clearance		ft-in (mm)	11'3 <sup>1</sup> / <sub>16</sub> " (3450)	11'11 <sup>1</sup> / <sub>16</sub> " (3640)	11'8 <sup>1</sup> / <sub>16</sub> " (3580)	12'1 <sup>1</sup> / <sub>16</sub> " (3700)
Dumping Reach (to front of bucket edge or teeth)		ft-in (mm)	5'0" (1525)	4'8 <sup>1</sup> / <sub>16</sub> " (1430)	4'7 <sup>1</sup> / <sub>16</sub> " (1400)	4'3 <sup>1</sup> / <sub>4</sub> " (1315)
Bucket Hinge Pin Height		ft-in (mm)	16 <sup>1</sup> / <sub>2</sub> " (4890)	16 <sup>1</sup> / <sub>2</sub> " (4890)	16 <sup>1</sup> / <sub>2</sub> " (4890)	16 <sup>1</sup> / <sub>2</sub> " (4890)
Digging Depth		ft-in (mm)	4 <sup>1</sup> / <sub>16</sub> " (125)	2 <sup>1</sup> / <sub>8</sub> " (60)	4 <sup>1</sup> / <sub>16</sub> " (125)	3 <sup>1</sup> / <sub>4</sub> " (95)
Breakout Force		lb (kg)	60,075 (27,250)	60,075 (27,250)	62,005 (28,125)	57,155 (25,925)
Bucket tilt-back angle	(at ground level)		42°	42°	42°	42°
	(at carry position)		50°	50°	50°	50°
Overall	Length	ft-in (mm)	31'1 <sup>1</sup> / <sub>16</sub> " (9485)	30'5 <sup>1</sup> / <sub>16</sub> " (9275)	30'10 <sup>1</sup> / <sub>16</sub> " (9400)	30'4 <sup>3</sup> / <sub>8</sub> " (9255)
	Height	ft-in (mm)	12'7 <sup>1</sup> / <sub>16</sub> " (3860)	12'7 <sup>1</sup> / <sub>16</sub> " (3860)	12'7 <sup>1</sup> / <sub>16</sub> " (3860)	12'7 <sup>1</sup> / <sub>16</sub> " (3860)
	Width (Outside Tire)	ft-in (mm)	10'5 <sup>7</sup> / <sub>16</sub> " (3190)	10'5 <sup>7</sup> / <sub>16</sub> " (3190)	10'5 <sup>7</sup> / <sub>16</sub> " (3190)	10'5 <sup>7</sup> / <sub>16</sub> " (3190)
	Width (Outside Bucket)	ft-in (mm)	11'3 <sup>1</sup> / <sub>8</sub> " (3450)	11'3 <sup>1</sup> / <sub>8</sub> " (3450)	11'3 <sup>1</sup> / <sub>8</sub> " (3450)	11'3 <sup>1</sup> / <sub>8</sub> " (3450)
Wheel Base		ft-in (mm)	11'8 <sup>1</sup> / <sub>8</sub> " (3560)	11'8 <sup>1</sup> / <sub>8</sub> " (3560)	11'8 <sup>1</sup> / <sub>8</sub> " (3560)	11'8 <sup>1</sup> / <sub>8</sub> " (3560)
Min. Turning Radius	at outside bucket	ft-in (mm)	24'6 <sup>1</sup> / <sub>8</sub> " (7490)	24'3 <sup>1</sup> / <sub>4</sub> " (7410)	24'6 <sup>1</sup> / <sub>8</sub> " (7490)	24'5 <sup>1</sup> / <sub>8</sub> " (7450)
	at center of outside tire	ft-in (mm)	20 <sup>1</sup> / <sub>4</sub> " (6100)	20 <sup>1</sup> / <sub>4</sub> " (6100)	20 <sup>1</sup> / <sub>4</sub> " (6100)	20 <sup>1</sup> / <sub>4</sub> " (6100)
Minimum Ground Clearance		ft-in (mm)	1'7 <sup>1</sup> / <sub>16</sub> " (490)	1'7 <sup>1</sup> / <sub>16</sub> " (490)	1'7 <sup>1</sup> / <sub>16</sub> " (490)	1'7 <sup>1</sup> / <sub>16</sub> " (490)
Full Articulation Angle		degree	40°	40°	40°	40°
Operating Weight (with ROPS cab)		lb (kg)	63,660 (28,875)	63,190 (28,665)	63,380 (28,745)	62,370 (28,290)
Static Tipping Load (with ROPS cab)	Straight	lb (kg)	36,420 (16,520)	37,090 (16,825)	36,830 (16,705)	37,750 (17,125)
	Full Turn	lb (kg)	31,260 (14,180)	31,930 (14,485)	31,700 (14,380)	32,370 (14,685)

The Weight and Load figure include Enclosed ROPS Cab, 29.5-25-22PR (L-3) tires, full fuel tank and operator. Measured in accordance with SAE J732C and J742C.



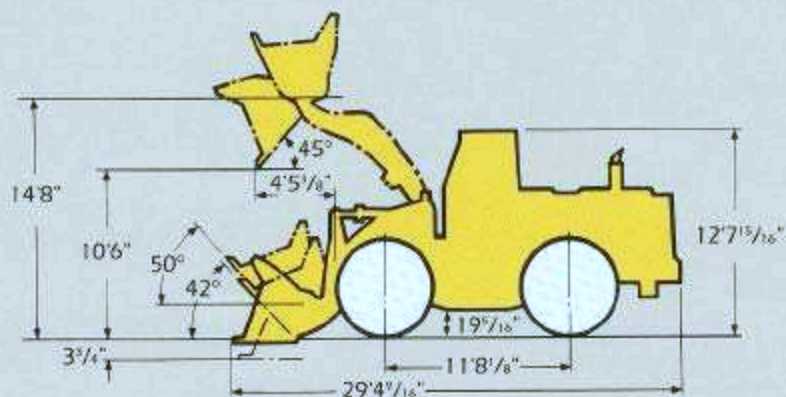
## WEIGHTS AND DIMENSIONS (SUPPLEMENTAL DATA)

	Operating Weight	Tipping Load			Overall Width (Outside Tire)	Tread	Vertical Dimension	Overall Length
		Straight	Full Turn					
ROPS Canopy (Instead of ROPS Cab)	-800 (-360)	-640 (-300)	-590 (-270)	in (mm)				
Remove ROPS Canopy and Cab	-2270 (-1030)	-2100 (-950)	-1850 (-840)	in (mm)			-2 1/2" (-620)	
Counter Weight	+760 (+345)	+1830 (+830)	+1610 (+730)	in (mm)				+1 3/4" (+45)
Tires: 26.5-25-24PR (L-3)	-930 (-420)	-710 (-320)	-620 (-280)	in (mm)	-3 1/8" (-80)		-1 1/8" (-40)	+1 (+25)
26.5-25-24PR (L-4)	-45 (-20)	-45 (-20)	-22 (-10)	in (mm)	-3/8" (-10)		-3/8" (-10)	-3/16" (-5)
26.5-25-24PR (L-5)	+1260 (+570)	+950 (+430)	+840 (+380)	in (mm)	-3/8" (-10)		-3/8" (-10)	-3/16" (-5)
29.5-25-22PR (L-4)	+1610 (+730)	+1215 (+550)	+1080 (+490)	in (mm)	+1/8" (+10)		+1" (+25)	-1" (-25)
29.5-25-22PR (L-5)	+2380 (+1080)	+1810 (+820)	+1590 (+720)	in (mm)	+3/8" (+10)		+1" (+25)	-1" (-25)
26.5-25-24PR (L-3) with 75% CaCl <sub>2</sub>	+2160 (+980)	+3990 (+1810)	+3530 (+1600)	in (mm)	-3 1/8" (-80)		-1 1/8" (-40)	+1 (+25)
29.5-25-22PR (L-3) with 75% CaCl <sub>2</sub>	+4190 (+1900)	+7055 (+3200)	+6240 (+2830)	in (mm)				
Air Conditioner	+220 (+100)	+250 (+115)	+220 (+100)	in (mm)				
Belly Guard (Rear Frame)	+330 (+150)	+420 (+190)	+420 (+190)	in (mm)				

Base: 29.5-25-22PR (L-3)

Tread.....7'11"  
(2420mm)  
Width (Outside Tire) .....10'5 9/16"  
(3190mm)  
Width (Outside Bucket) .....11'3 7/8"  
(3450)

Equipped with GSC bucket with bolt on cutting edge  
29.5-25-22PR (L-3) TIRE, and ROPS cab.





## STANDARD EQUIPMENT

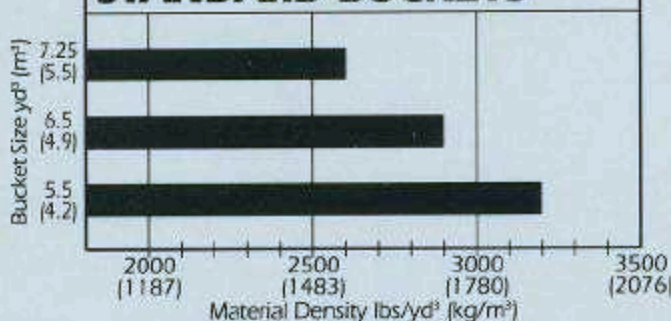
Adjustable steering column Air cleaner (Donaldson; double element 2 stage type) Alarms, audible: brake oil level brake oil pressure parking brake w/transmission engaged (neutral check) engine oil pressure engine water temperature transmission oil temperature emergency brake Alarms, visual: air filter auto brake battery discharge brake oil level brake oil pressure emergency brake engine water level	engine oil level engine oil pressure engine water temperature transmission oil temperature transmission control system parking brake Alternator-24V, 75 amp Batteries two (2)-12V-200 Ah Boom lift kick out Bucket positioner Cold start ether system Draw bar Emergency brake Engine side panel Fan guard Fenders (front and rear) Filtration system (replaceable elements)	Frame lock Gauges: converter oil temperature engine water temperature fuel level hour meter Horn (electric) Indicator lights: working light high beam, transmission cutoff, neutral, 1st, 2nd, low, high Lights: two (2) headlights, two (2) stop & tail lights, two (2) rear working light Neutral safety start Parking brake (spring applied oil released type)	Ladder (access at both sides) Pilot assisted hydraulic control Reverse alarm ROPS cab, enclosed with sound suppression, front and rear windshield wiper and washer, front working lights, defroster fan and rear view mirrors Seat belt Seat (adjustable suspension type) Special tool kit Switches: cold start, headlight, rear working light, starter, parking, transmission cut-off, wiper Tires: four (4) 29.5-25-22PR (L-3) Vandalism protection
---	---	---	--

## OPTIONAL EQUIPMENT

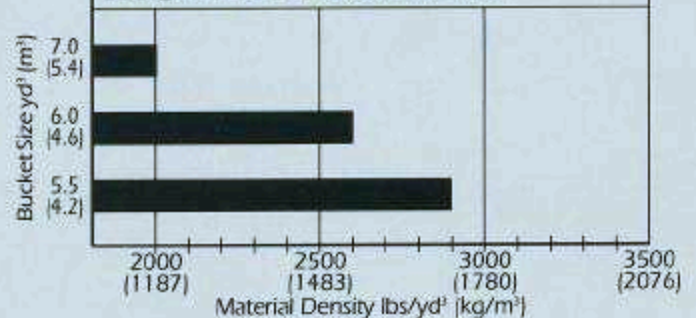
Air conditioner with heater and defroster Belly guard Bolt-on counterweight (instead of rear tire ballast)	Bolt-on wear plate Bucket (see data chart) Emergency steering (special option) Heater: 16,000 BTU/hr rated hot water High lift arm kit	Hydraulic system – three spool valve, control lever, linkage and lines (special option) ROPS canopy Teeth, weld-on	Tires (set of four): 26.5-25-24PR (L-3) 29.5-25-22PR (L-4) 29.5-25-22PR (L-5) 26.5-25-24PR (L-4) 26.5-25-24PR (L-5)
--	--	--	--

Certifications are subject to change without notice.

### BUCKET SELECTION GUIDE STANDARD BUCKETS



### BUCKET SELECTION GUIDE HIGH LIFT BUCKETS







2140 Barrett Park Drive • Suite 101  
P.O. Box 1657  
Kennesaw, Georgia 30144  
Tel: 770-499-7000  
Fax: 770-421-6842  
[www.kawasakiloaders.com](http://www.kawasakiloaders.com)