

ONE FOCUS.
COMPLETE
SOLUTIONS



115Z^v

 **Kawasaki**

Courtesy of Machine.Market



A PRODUCTION POWERHOUSE

115^{ZV}

A COMPLETE SOLUTION

- Emissions-compliant 480 HP Cummins diesel
- 8.3 cu. yard to 8.5 cu. yard buckets available
- Dual Z-linkage arms—heaviest in its class
- Ride Control provides stable load handling, optional
- K-Lever+ provides one-hand steering and transmission control
- Air Conditioner and heater standard
- Automatic powershift transmission with four forward and three reverse speeds
- Outboard-mounted, four-wheel, dual circuit sealed wet disc brakes for reliability and long service life
- Easy access to drains, filters and fittings
- Increased width of cab by 20% for operator comfort
- Transmission designed with helical gears, reducing noise level and vibration
- Engine cooling system with hydraulic fan for efficient cooling

THE POWER TO PERFORM!

The **115^{ZV}** loader is a versatile, high productivity wheel loader for applications from quarries to bulk material handling. Featuring a Cummins QSK19 diesel engine producing 480 flywheel horsepower, an 8.3 cu. yard bucket, a certified open ROPS and cab and a host of other features that provide high operating efficiency, ease of maintenance and safety, the **115^{ZV}** is always ready for the heavy duty jobs.

OPERATOR PRODUCTIVITY AND SAFETY

The **115^{ZV}** features a completely redesigned enclosed cab. The operator's compartment features a gasket-mounted flat tinted glass windshield which removes viewing obstructions and improves the operator's peripheral view. The cab also offers unmatched comfort and is designed to maximize efficiency and productivity. Accessible by ladders on both sides, the cab has been increased in size by 20% for improved safety, visibility and comfort. The **115^{ZV}** comes standard with a 27,000 BTU air conditioner and an AM/FM cassette radio.



Kawasaki and their dealer organization offer comprehensive support and service programs designed to keep you on the job.

PUTTING THE 115^{2V} TO WORK

Like all Kawasaki loaders, the **115^{2V}** has a 40-year heritage of strength and reliability. With dual pilot-assisted hydraulic controls, automatic powershift transmission and low-effort steering, the **115^{2V}** is designed to turn out the work.

Kawasaki's standard K-Lever⁺ Steering system increases operator productivity and dramatically reduces fatigue in wheel loader cycling applications. Located on the left armrest, K-Lever⁺ provides fast, proportional steering and transmission control with one hand convenience.

The **115^{2V}** is available with an 8.3 cubic yard bucket with teeth and bolt-on segment edges. Simultaneous roll-back and lift operations can be performed with the bucket control lever for smooth, efficient bucket loading. Optional Ride Control significantly reduces vibration for improved stability while reducing operator fatigue.

The outboard-mounted, four-wheel sealed wet disc brakes are designed for long life and easy access and overhaul. Standard spin-on filters, remote mounted grease fittings and oil drain simplify maintenance. The standard 35/65-33-24PR (L4) tires and optional L5 tires use heavy duty three-piece rims for easy servicing in the field.



UNMATCHED SUPPORT

Kawasaki maintains a large inventory of new components to ensure outstanding parts availability and minimal downtime. In addition, a predictive oil analysis program helps eliminate unnecessary maintenance and helps find problems before they occur. Kawasaki also stocks an array of cost-effective rebuilt components.

BUILT TO STAY ON THE JOB

Kawasaki loaders are designed with the durability to provide years of service. Backed by a dealer network of heavy equipment experts and a dedicated support staff in the Kawasaki parts and service organization, your investment in a Kawasaki loader is an excellent choice that will pay dividends for years to come.



POWER AND PERFORMANCE PROVIDE UNMATCHED PRODUCTIVITY



The Kawasaki **115^{2V}** means business. It incorporates the best in design and technology, giving your operators the tool they need to get the job done.

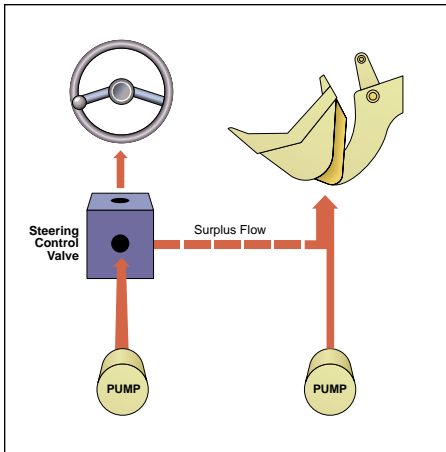
Because Kawasaki specializes in the design and manufacture of articulated wheel loaders, you get a machine with a 40-year heritage of successful innovations. The power and productivity that the **115^{2V}** brings to the job is a result of that experience.

WORLD-CLASS ENGINES

- 480 HP Tier 2, emissions-compliant Cummins QSK19 diesel
- Engineered for longer service life
- High torque and fuel efficient
- Extensive distribution system
- 24 volt battery system for reserve power
- E/G mode switch (normal, power)

QSK19 FEATURES & BENEFITS

- Increased injection pressure, increased response
- Improved fuel economy
- Single-Stage Turbocharger with aftercooler
- Water-cooled bearings increase turbo life
- Steel "I" oil rings reduce oil consumption



HIGH EFFICIENCY HYDRAULIC SYSTEM

- Dry, reliable
- Cast iron gear pumps
- Light-touch steering is maintained, even at low engine speeds. When steering is not required, oil flow control routes full steering pump discharge to supplement the loading circuit.
- Easy access to two-spool control valve
- Large oil reservoir keeps oil cooler



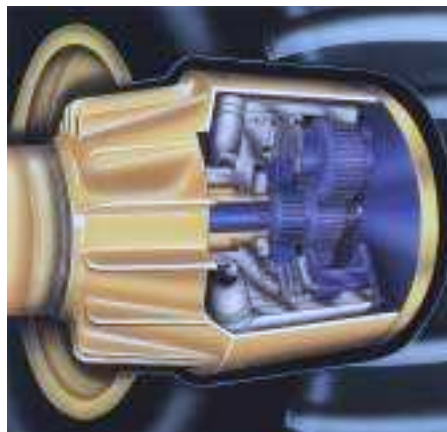
TRANSMISSION

- Automatic transmission selects optimum speed from second to fourth gear
- Heavy-duty design increases reliability
- Large standard SAE universal joints
- Single lever control
- Downshift button speeds cycle times and reduces operator fatigue
- Helical gears reduce noise and vibration
- Switch activates transmission declutch on right and left brake pedals



AXLES/BRAKES

- Heavy-duty differential
- 35/65-33-24PR (L-4) tires standard
- 35/65-33-30PR (L-4, L-5) and 35/65-R33 tires available
- 3-piece wheel rims standard
- Outboard-mounted, four-wheel, dual-circuit wet disc brakes
- Auto adjuster maintains brake feel
- High capacity
- Easy maintenance
- Long life



LIFT ARMS/BUCKETS

- Z-linkage
- High breakout force
- Optional high lift arms available
- 8.3 cu. yd. rock bucket
- Easy loading
- Excellent load retention
- Full assortment of edges and teeth
- Complete array of attachments available
- Bolt-on heel plates extend bucket life
- Bucket leveler and boom kick-out standard
- Lower bucket pins are fully sealed with grease to provide dependable service with minimum maintenance



STRONG, RUGGED BOX FRAME

- Massive center pins and bearings
- High strength loader tower
- Heavy box frame rear chassis



THE COMFORT ZONE

Kawasaki has taken a from-the-ground-up approach to create a cab designed with the operator in mind—including a 20% increase in width. The cab focuses on providing the ultimate environment for productivity, comfort and safety. The high visibility, quiet, temperature controlled cab offers the operator ideal surroundings for putting the Kawasaki loader through its paces.



115^{2V} Features

- K-Lever⁺ steering and transmission control
- Flooring configuration reduces sound levels and allows easy cleaning
- Reduced noise levels
- Increased storage
- Flat glass windows for easy replacement
- Cab offers easy entry from either side
- Side windows roll down
- Halogen headlights improve nighttime visibility
- Cab interior increased 20% in size for operator comfort
- Climate-controlled storage box for food and beverages

Standard Features

- Air ride seat, standard, with adjustable arms, lumbar support and headrest
- All systems monitored with lights and alarms
- Dual, pilot-assisted hydraulic controls—fingertip control
- Automatic temperature control unit



Photo representative of similar models.



- One rearview and two side mirrors
- AM/FM cassette radio, standard
- Rear lights added to cab
- Personal storage space and coat hook
- 27,000 BTU air conditioner and 40,000 BTU heater, standard
- Cold start feature
- Pressurized air control
- Switch activates transmission declutch on both brake pedals
- Front and rear wipers and washers
- Intermittent front wiper
- Adjustable wrist rest
- Viscous isolation-mounted to reduce vibration

K-LEVER⁺ STICK STEERING

- Increases productivity and reduces fatigue
- Full hydraulic steering system
- Forward, neutral, reverse and downshift buttons for one-hand steering/transmission control
- Positive, well modulated steering
- Fully adjustable for maximum operator comfort



EASY ACCESS SIMPLIFIES SERVICING

- Hinged grille makes radiator cleaning easy
- Engine side covers open wide for optimum access
- Filters positioned within easy reach
- Easy access to drains, filters and fittings
- Grease fittings are grouped for easy lubrication
- Readily available Fleetguard and Donaldson filters
- Starters and alternators available through Cummins national distribution network
- 3-piece wheel rims standard for easy field service
- Cooling system engineered to allow easy access to radiator and hydraulic coolers from side compartments
- Ladders on both sides of the machine
- Pressurized air control reduces dust in cab and control boxes
- Trunnion grease fittings located near axle



- Sealed universal joints (only require greasing at 2000 hour intervals)
- Electric wiring color-coded and numbered for ease of service

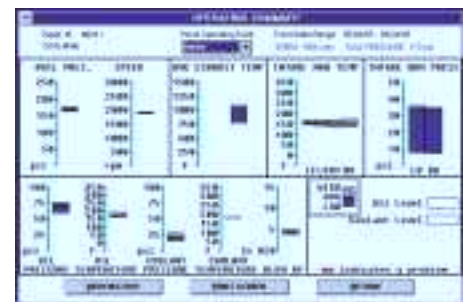


- Woven electric wire guards
- Deutsch electric connectors throughout wiring harness



CUMMINS INSITE

- Engine monitoring system monitors 39 points
- Chart oil temperature, oil pressure, intake and exhaust temperature
- 150 functions to assure accurate troubleshooting



OPTIONS

RIDE CONTROL

- Stable load handling
- Reduces operator fatigue
- Cuts vibration and equipment wear
- Improves safety and productivity
- Less spillage
- Faster travel speed

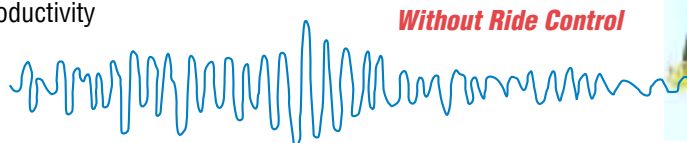


Illustration representative of similar models.

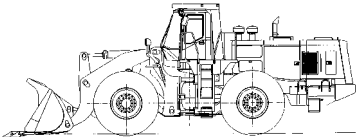
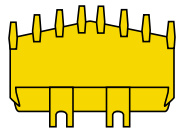
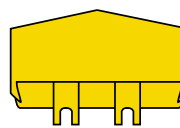
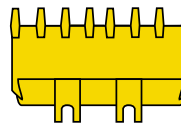
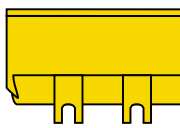
K-LINK

- On demand reports provide machine location, hours, operating status
- Alarm notification by phone or pager can indicate equipment failure, low-fuel, geo-fence break
- Worldwide satellite coverage
- Customize reports and alerts
- Internet access to all reports and alerts

EMERGENCY STEERING

- Allows the machine to be steered in the event of an unexpected engine shut-off

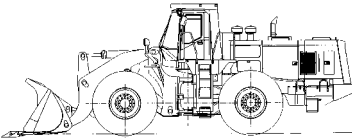
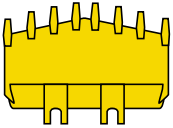
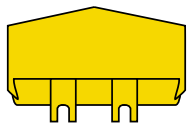
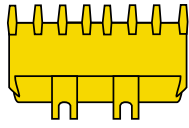
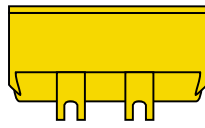
BUCKET DATA

			Standard Boom			
			Rock-V-Edge		Rock-Straight	General Purpose
			With Teeth & Bolt-On Segment Edge	Without Teeth	With Teeth & Bolt-On Segment Edge	With Bolt-on Cutting Edge
						
Capacity	Heaped	yd ³ (m ³)	8.3 (6.4)	7.9 (6.1)	8.1 (6.3)	8.5 (6.6)
	Struck	yd ³ (m ³)	7.3 (5.6)	6.9 (5.4)	7.1 (5.5)	7.5 (5.8)
Maximum dumping clearance		ft-in (mm)	10'10 ¹¹ / ₁₆ " (3320)	11'9 ³ / ₄ " (3600)	11'5" (3480)	12'1 ¹ / ₈ " (3660)
Dumping reach (to front of bucket edge or tooth)		ft-in (mm)	6'6 ³ / ₈ " (1990)	5'10 ⁷ / ₈ " (1800)	6'1 ¹ / ₁₆ " (1830)	5'6 ⁹ / ₁₆ " (1690)
Bucket hinge pin height		ft-in (mm)	16'6 ¹ / ₂ " (5040)	16'6 ¹ / ₂ " (5040)	16'6 ¹ / ₂ " (5040)	16'6 ¹ / ₂ " (5040)
Digging depth		ft-in (mm)	6 ⁷ / ₈ " (175)	3 ¹⁵ / ₁₆ " (100)	6 ⁷ / ₈ " (175)	5 ¹ / ₂ " (140)
Breakout force		lb (kg)	84,900 (38,500)	84,900 (38,500)	101,000 (45,800)	86,900 (39,400)
Bucket tilt-back angle	at ground level		43°	43°	43°	43°
	at carry position		50°	50°	50°	50°
Overall	Length	ft-in (mm)	36'10 ¹ / ₈ " (11,230)	35'8 ³ / ₄ " (10,890)	36'1 ¹ / ₁₆ " (11,000)	35'4 ⁷ / ₁₆ " (10,780)
	Height	ft-in (mm)	13'8 ¹ / ₄ " (4170)	13'8 ¹ / ₄ " (4170)	13'8 ¹ / ₄ " (4170)	13'8 ¹ / ₄ " (4170)
	Width (outside tire)	ft-in (mm)	11'8 ⁹ / ₁₆ " (3570)	11'8 ⁹ / ₁₆ " (3570)	11'8 ⁹ / ₁₆ " (3570)	11'8 ⁹ / ₁₆ " (3570)
	Width (outside bucket)	ft-in (mm)	12'4 ³ / ₈ " (3770)	12'4 ³ / ₈ " (3770)	12'4 ³ / ₈ " (3770)	12'4 ³ / ₈ " (3770)
Wheel base		ft-in (mm)	13'3 ⁷ / ₁₆ " (4050)	13'3 ⁷ / ₁₆ " (4050)	13'3 ⁷ / ₁₆ " (4050)	13'3 ⁷ / ₁₆ " (4050)
Minimum turning radius	at outside bucket	ft-in (mm)	27'3 ⁹ / ₁₆ " (8320)	26'9 ⁵ / ₈ " (8170)	27'3 ⁹ / ₁₆ " (8320)	27'0" (8230)
	at center of outside tire	ft-in (mm)	22'7 ¹ / ₄ " (6890)	22'7 ¹ / ₄ " (6890)	22'7 ¹ / ₄ " (6890)	22'7 ¹ / ₄ " (6890)
Minimum ground clearance		ft-in (mm)	1'9 ⁵ / ₈ " (550)	1'9 ⁵ / ₈ " (550)	1'9 ⁵ / ₈ " (550)	1'9 ⁵ / ₈ " (550)
Full articulation angle		degree	40°	40°	40°	40°
Operating weight (with open ROPS and cab)		lb (kg)	100,180 (45,440)	98,190 (44,540)	99,800 (45,270)	98,440 (44,650)
Static Tipping Load (with ROPS Canopy and Cabin)	Straight	lb (kg)	65,280 (29,610)	67,790 (30,730)	65,810 (29,850)	67,220 (30,490)
	Full turn	lb (kg)	55,910 (25,360)	58,030 (26,320)	56,370 (25,570)	57,560 (26,110)

The weight and load figure includes optional counterweight, open ROPS and enclosed cab, 36/65-33-24PR (L-4) tires, full fuel tank and operator.

Materials and specifications are subject to change without notice and without obligation on the part of the manufacturer. The specifications supplied, while believed to be completely reliable, are not to be taken as warranty for which we assume legal responsibility.

BUCKET DATA

			High Lift Boom			
			Rock-V-Edge		Rock-Straight	General Purpose
			With Teeth	Without Teeth	With Teeth	With Bolt-on Cutting Edge
						
Capacity	Heaped	yd ³ (m ³)	6.5 (5.0)	6.5 (5.0)	6.4 (4.9)	7.8 (6.0)
	Struck	yd ³ (m ³)	5.6 (4.3)	5.6 (4.3)	5.5 (4.2)	6.8 (5.2)
Maximum dumping clearance		ft-in (mm)	12'5 ⁵ / ₈ " (3800)	13'6 ³ / ₁₆ " (4120)	13'5 ⁹ / ₁₆ " (3970)	13'6 ⁵ / ₈ " (4130)
Dumping reach (to front of bucket edge or tooth)		ft-in (mm)	6'7 ¹ / ₂ " (2020)	5'11 ⁷ / ₈ " (1825)	6'1 ³ / ₁₆ " (1850)	5'9 ¹ / ₈ " (1755)
Bucket hinge pin height		ft-in (mm)	18'1 ¹ / ₈ " (5490)	18'1 ¹ / ₈ " (5490)	18'1 ¹ / ₈ " (5490)	18'1 ¹ / ₈ " (5490)
Digging depth		ft-in (mm)	7 ¹ / ₂ " (190)	4 ¹ / ₈ " (105)	7 ¹ / ₂ " (190)	5 ¹ / ₂ " (140)
Breakout force		lb (kg)	90,400 (41,000)	90,400 (41,000)	108,900 (49,400)	94,100 (42,690)
Bucket tilt-back angle	at ground level		43°	43°	43°	43°
	at carry position		50°	50°	50°	50°
Overall	Length	ft-in (mm)	38'1 ⁷ / ₈ " (11,630)	36'11 ⁵ / ₁₆ " (11,260)	37'4 ⁷ / ₁₆ " (11,390)	36'9 ⁵ / ₁₆ " (11,210)
	Height	ft-in (mm)	13'8 ³ / ₁₆ " (4170)	13'8 ³ / ₁₆ " (4170)	13'8 ³ / ₁₆ " (4170)	13'8 ³ / ₁₆ " (4170)
	Width (outside tire)	ft-in (mm)	11'8 ⁹ / ₁₆ " (3570)	11'8 ⁹ / ₁₆ " (3570)	11'8 ⁹ / ₁₆ " (3570)	11'8 ⁹ / ₁₆ " (3570)
	Width (outside bucket)	ft-in (mm)	12'4 ⁷ / ₁₆ " (3770)	12'4 ⁷ / ₁₆ " (3770)	12'4 ⁷ / ₁₆ " (3770)	12'4 ⁷ / ₁₆ " (3770)
Wheel base		ft-in (mm)	13'3 ⁷ / ₁₆ " (4050)	13'3 ⁷ / ₁₆ " (4050)	13'3 ⁷ / ₁₆ " (4050)	13'3 ⁷ / ₁₆ " (4050)
Minimum turning radius	at outside bucket	ft-in (mm)	27'9 ¹ / ₁₆ " (8460)	27'3 ³ / ₁₆ " (8320)	27'9 ¹ / ₁₆ " (8460)	27'7 ¹ / ₂ " (8420)
	at center of outside tire	ft-in (mm)	22'7 ¹ / ₄ " (6890)	22'7 ¹ / ₄ " (6890)	22'7 ¹ / ₄ " (6890)	22'7 ¹ / ₄ " (6890)
Minimum ground clearance		ft-in (mm)	1'9 ⁵ / ₈ " (550)	1'9 ⁵ / ₈ " (550)	1'9 ⁵ / ₈ " (550)	1'9 ⁵ / ₈ " (550)
Full articulation angle		degree	40°	40°	40°	40°
Operating weight (with open ROPS and cabin)		lb (kg)	99,320 (45,050)	98,240 (44,560)	98,880 (44,850)	98,410 (44,640)
Static Tipping Load (with ROPS Canopy and Cabin)	Straight	lb (kg)	57,610 (26,130)	58,910 (26,720)	58,030 (26,320)	58,440 (26,510)
	Full turn	lb (kg)	49,320 (22,370)	50,440 (22,880)	49,670 (22,530)	50,040 (22,700)

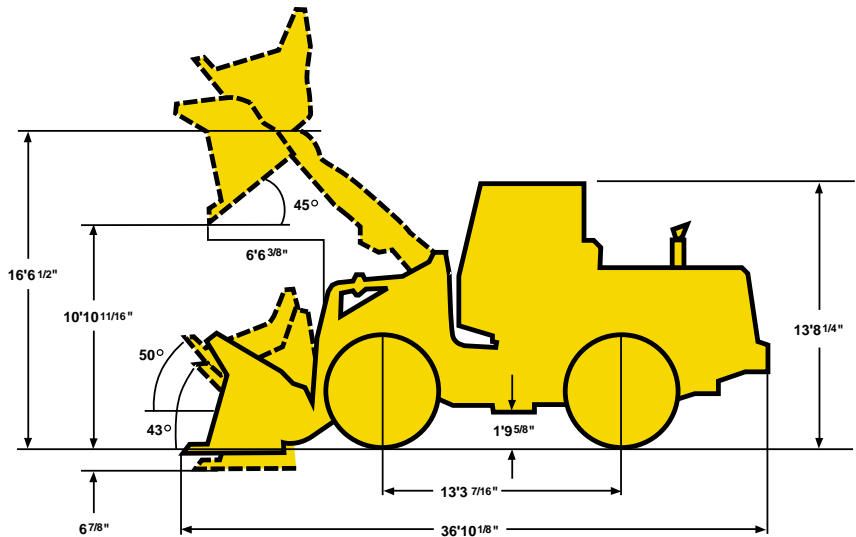
*The weight and load figure includes optional counterweight, open ROPS and enclosed cab, 36/65-33-24PR (L-4) tires, full fuel tank and operator.

WEIGHTS AND DIMENSIONS (SUPPLEMENTAL DATA)

		Operating Weight	Tipping Load			Overall Width (Outside Tire)	Tread	Vertical Dimensions	Overall Length
			Straight	Full Turn					
Remove ROPS Canopy and Cab (for transport only)	lb (kg)	-2580 (-1170)	-2250 (-1020)	-1940 (-880)	in (mm)			-1'4 ¹ / ₈ " (-410)	
Remove Optional Counter Weight	lb (kg)	-1260 (-570)	-3110 (-1410)	-2650 (-1200)	in (mm)				
Tires: 35/36-33-24PR (L-5)	lb (kg)	+1500 (+680)	+1040 (+470)	+900 (+410)	in (mm)	-4 ³ / ₄ " (-120)		+1" (+25)	-1 ³ / ₈ " (-35)
35/65-33-24 (L-4) (75% CaCl ₂)	lb (kg)	+5950 (+2700)	+8510 (+3860)	+7280 (+3300)	in (mm)				
35/65-33-24 (L-5) (75% CaCl ₂)	lb (kg)	+7450 (+3380)	+9550 (+4330)	+8180 (+3710)	in (mm)			+1" (+25)	-1 ³ / ₈ " (-35)
Air conditioner (Deletion)	lb (kg)	-200 (-100)	-180 (-80)	-150 (-70)	in (mm)				
Belly Guard (Rear Frame)	lb (kg)	+310 (+140)	+440 (+200)	+375 (+170)	in (mm)				

Tread 8'8⁹/₁₆" (2050mm)
 Width (outside tire) 11'8⁹/₁₆" (3570mm)
 Width (outside bucket) 12'4⁷/₁₆" (3770mm)

Equipped with Rock-V-Edge bucket with teeth,
 35/65-33-24PR (L-4) Tire and Open ROPS
 and Enclosed Cab



OPERATING SPECIFICATIONS

ENGINE

Make/Model/Fuel Type	Cummins QSK19
Type	4-cycle, water-cooled, in-line, direct injection type with turbocharger and air-cooled intercooler
Net flywheel horsepower	480HP/2000 RPM
Maximum torque	1386 ft/lb @ 1300 RPM
Number of cylinders	6
Bore and stroke	6.25" x 6.25" (159mm x 159mm)
Total displacement	1150 in ³ (18,853 cm ³)
Alternator	AC24V-1800W (75 amp)
Starting motor	24V-8.9kw (12HP)
Battery	12V-200AH, 2 units
Governor	All-speed, electrical type

TORQUE CONVERTER AND TRANSMISSION

Torque converter	3 element, single stage, 1-phase
Torque stall ratio	2.75
Main clutches	Wet hydraulic, multi-disc type
Cooling method	Forced circulation type
Transmission	Full powershift, 4 forward, 3 reverse with automatic mode (2nd-4th) with downshift switch for 2nd-1st downshifting. Autobrake protects transmission from overspeeding
Speeds Forward	1st: 4.3 MPH (7.0km/hr) 2nd: 8.1 MPH (13.0km/hr) 3rd: 13.2 MPH (21.3 km/hr) 4th: 21.8 MPH (35.1 km/hr)
Speeds Reverse	1st: 4.7 MPH (7.5 km/hr) 2nd: 8.6 MPH (13.9 km/hr) 3rd: 14.1 MPH (22.7 km/hr)

SERVICE REFILL CAPACITY

LOCATION	Gallons	Liters
Engine (coolant)	32	(122)
Fuel tank (diesel fuel)	177	(670)
Engine (oil pan)	17	(66)
Front axle (gear oil)	48	(180)
Rear axle (gear oil)	48	(180)
Torque converter and transmission (engine oil)	22.5	(85)
Hydraulic system including tank (hydraulic oil)	125.5	(475)

HYDRAULIC AND STEERING SYSTEM

Steering type	Articulated frame steering	
Steering mechanism	Hydraulic power steering unit, pilot operated type	
Lift (boom) cylinder	Two (2) double-acting piston type: 8 ⁷ / ₈ " x 3' 8 ⁹ / ₁₆ " (225mm x 113.2mm)	
Tilt (bucket) cylinder	Two (2) double-acting piston type: 7 ¹ / ₂ " x 2' 6 ³ / ₁₆ " (190mm x 767mm)	
Steering cylinder	Two (2) double-acting piston type: 4 ⁵ / ₁₆ " x 2' 4 ³ / ₈ " (110mm x 720mm)	
Steering oil pump (double section)	Gear type: 108.8 GPM @ 2000 RPM (412 LPM @ 2000 RPM)	
Main oil pump	Gear type: 48.1 GPM @ 2000 RPM (182 LPM @ 2000 RPM)	
Pilot/Brake oil pump	Gear type: 51.8 GPM @ 2000 RPM (196 LPM @ 2000 RPM)	
Relief set pressure	Loading	3000 psi (210 kg/cm ²)
	Steering	3000 psi (210 kg/cm ²)
HYDRAULIC CYCLE TIME*		
Lifting time (at full load)	8.4 sec.	
Lowering time (empty)	4.7 sec.	
Bucket dumping time	2.1 sec.	
TOTAL	15.2 sec.	

* Measured in accordance with SAE J732C

AXLE SYSTEM

Drive system	4-wheel drive	
Front and rear axle	Full floating banjo type	
Tires	Standard	35/65-33-24PR (L-4)
	Optional	35/65-33-24PR (L-5) 35/65-33-30PR (L-4) (L-5), 35/65-R33
Reduction & differential gear	Spiral bevel gear, 1 stage reduction	
Final reduction gear	Outboard mounted, internal planetary gear	
Oscillation angle	±13° (total 26°)	

BRAKE SYSTEM

Service brakes	4 wheel adjustment-free, wet multiple disc brake. Controlled by full hydraulic system. Dual circuit
Parking/Emergency brake	Spring applied oil released type, located in front driveline.

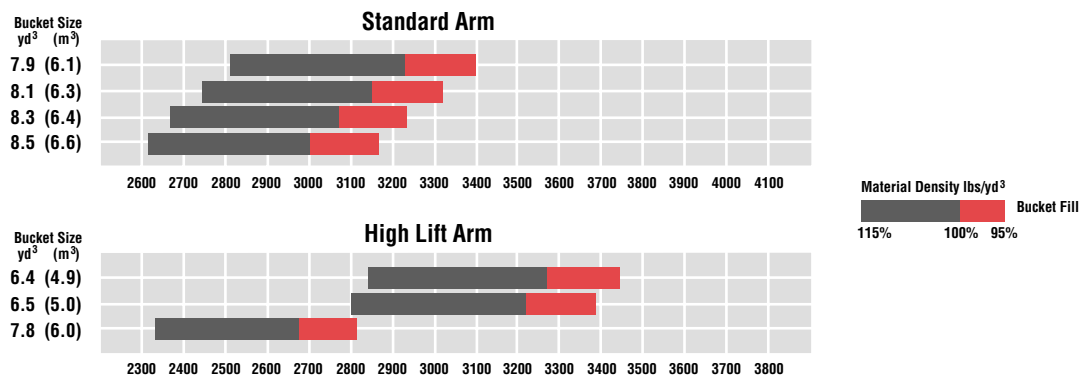
STANDARD EQUIPMENT

<p>Air Cleaner (2) (Double Element Donaldson with Precleaner)</p> <p>Air Conditioner Heater/Pressurizer (40,000 BTU) R134 Refrigerant</p> <p>Alarms (Audible): Auto Brake Activation Brake Pressure Engine Oil Pressure</p> <p>Alarms (Visual): Air Filter Auto Brake Battery Discharge Brake Pressure Converter Oil Temperature Engine Oil Pressure Engine Coolant Temperature Parking Brake</p> <p>Alternator (75 amp) AM/FM Cassette Radio Auto Brake Batteries: 12V-200AH (2 units)</p>	<p>Belly Guard for Engine (Bolt-On)</p> <p>Brake Line Protection (Front)</p> <p>Brake (Parking) Spring applied; Oil released, Drum type</p> <p>Brakes (Service) Oil/Oil Actuation Enclosed Wet Disc Dual System</p> <p>Bucket Control Lever (Dual, Pilot Assisted)</p> <p>Bucket Leveler</p> <p>Boom Kickout</p> <p>Coat Hook</p> <p>Cold Start Aid</p> <p>Cup Holder</p> <p>Downshift Button</p> <p>Drawbar</p> <p>Electrical System (24 volt)</p> <p>Fan (Blower)</p> <p>Fenders (Front and Rear)</p>	<p>Gauges: Converter Oil Temperature Engine Coolant Temperature Fuel Level Hour Meter Hydraulic Oil Level Tachometer</p> <p>Hoodsides (Hinged)</p> <p>Horn (Electric)</p> <p>Indicators: High Beam Parking Brake Transmission Declutch Transmission Shift Monitor Working Light</p> <p>K-Lever* (Stick Steer Control)</p> <p>Linkage (Dual Z-type, Sealed)</p> <p>Lights: Headlight, 2 (Halogen) Work Light Front, 4 Rear, 4 Stop/Tail, 2</p> <p>Muffler</p> <p>Neutral Safety Start</p>	<p>Open ROPS & Enclosed Cab: Enclosed cab with sound suppression, front lights, front and rear wipers and washers, one rear view and two side mirrors, tinted glass, rear lights and roll up side windows</p> <p>Operator's Manual Box</p> <p>Radiator: Heavy Duty Plate Fin Type</p> <p>Radiator Grille, Hinged</p> <p>Reverse Alarm</p> <p>Safety Articulation Locking Bar</p> <p>Seat, Air Ride</p> <p>Seat Belt, Retractable, 3" wide</p> <p>Shift Control Unit for Automatic Shift</p> <p>Transmission Declutch Selector Switch</p> <p>Vandalism Protection</p> <p>Wrist Rest, Adjustable</p>
---	---	--	--

OPTIONAL EQUIPMENT

<p>Belly Guard, Hinged</p> <p>Bolt-On Cutting Edge Segments</p> <p>Bucket Teeth</p>	<p>Converter, 12v</p> <p>Counterweight</p> <p>Cushion Dump Valve</p> <p>Easy Clean Radiator</p>	<p>Emergency Steering</p> <p>High Lift Arm</p> <p>Hydraulic System, 3-Spool Valve</p>	<p>K-Link Satellite Tracking System</p> <p>Ride Control</p>
---	---	---	---

BUCKET SELECTION CHARTS





KAWASAKI LOADERS

More Than A Machine, A Complete Solution

Kawasaki Construction Machinery Corp. of America, a division of Kawasaki Heavy Industries, is a leading supplier of a full range of high quality wheel loaders. In fact, Kawasaki is the oldest on-going manufacturer of articulated, rubber-tired wheel loaders in the world. Since 1962, Kawasaki wheel loaders have continuously evolved to bring you the best in equipment and support services, backed by a carefully selected dealer network.

Kawasaki articulated wheel loaders incorporate innovative design features coupled with extensive knowledge and experience gained from real-world applications. Kawasaki pioneered Z-Link design to provide unmatched utility, high breakout force and efficiency in its machines. Powered by proven emissions-compliant Cummins diesel engines, durability and serviceability are designed into every Kawasaki loader.

Kawasaki loaders are assembled at the company's modern facilities in Newnan, GA. Service and support operations are headquartered in Kennesaw, GA.

A state-of-the-art parts distribution system links dealers with the main parts warehouse, allowing them to order parts directly. Qualified craftsmen rebuild components for all Kawasaki models at our fully-equipped rebuild center, making component exchange easier and



faster. An independent oil analysis program allows monitoring of critical systems to reduce unscheduled downtime.

The independent dealers that represent and support Kawasaki loaders are

experts in their markets and are dedicated to providing you with the best service available. Together, we are committed to making your investment in a Kawasaki loader a sound business decision that will pay dividends for years to come.



2140 Barrett Park Drive • Suite 101
Kennesaw, Georgia 30144
Tel: 770-499-7000 • Fax: 770-421-6842
www.kawasakiloaders.com

