

70ZII



70zII

SUMMARY OF FEATURES

- The reliable, fuel efficient Cummins 6BTA 5.9-C engine supplies high torque and big 158 HP.
- The 4-speed powershift transmission speeds cycles with soft shift and convenient twist grip lever.
- Sealed, Z-linkage for high breakout force and easy digging.
- High capacity, sealed wet disc brakes provide long service life, with protection from the operating environment.
- High-bias, torque proportioning differentials reduce wheel spin in slippery conditions.
- Tight turning diameter offers excellent maneuverability.
- Large 23.5 x 25 optional tire provides excellent flotation and high load capacity.
- Pressurized hydraulic tank keeps oil cleaner, longer.
- Safety features include separate brake systems front and rear, emergency brake, major system monitor, reverse alarm, neutral start, and optional emergency steering.
- Operator features include isolated/sound suppressed cab, adjustable steering column, suspension seat, bucket leveler and back kickout.
- Services features include sealed linkage pins, remote mounted grease fittings, tire inflation kit, SAE hydraulic hoses, and hinged hoodsides.

CUMMINS ENGINE

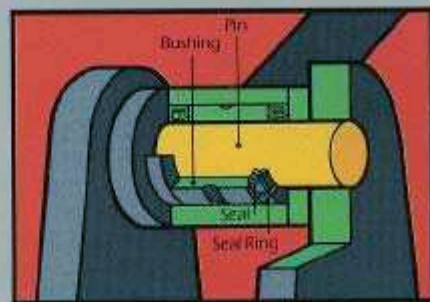
The high performance Cummins 6BTA 5.9-C diesel supplies a big 158HP. Fuel efficiency is outstanding. Cold start kit is standard. Resilient engine mounts reduce vibration and noise. Two stage Donaldson air cleaner protects the engine. Cummins engines are supported by an extensive nationwide dealer network.



OPERATOR COMFORT FEATURES

The roomy ROPS cab is rubber mounted to reduce vibration and sound levels. The cab is well appointed with tinted glass, sliding windows, front and rear wipers and washers, defroster fan, side mirrors and interior rear view mirrors. The fully adjustable suspension seat and adjustable steering column provide added comfort. Excellent visibility in all directions improves cycle times and safety.

SEALED Z-LINKAGE



The Z-linkage provides high breakout force for digging tough material. The 50° bucket rollback permits carrying the full load without spillage. The linkage pins are sealed to retain lubricant. The bucket pins are double sealed for extra protection.



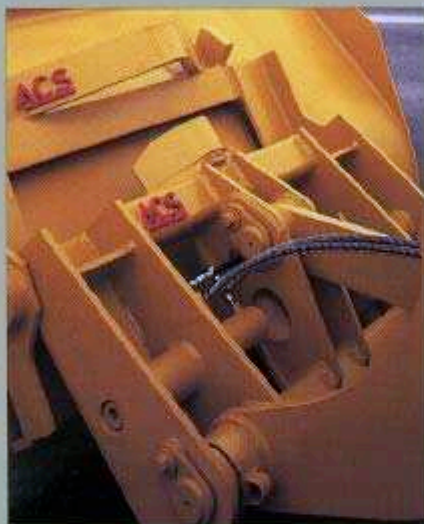
4-SPEED TRANSMISSION

The soft shift transmission reduces shift shock, speeds cycles and protects the powertrain. The convenient twist grip shift lever makes shifting simple.



COUPLER INCREASES VERSATILITY

The 70ZII can be equipped with a quick coupler to allow easy change of attachments. For applications where bucket, forks, brooms, or a variety of other attachments are required, the coupler offers increased versatility. A third hydraulic spool is easy to add if desired.



HIGH-BIAS, TORQUE PROPORTIONING DIFFERENTIALS

The standard torque proportioning differentials reduce tire spin in soft or slippery materials. The high 1.7-2.0 bias ratio means a higher level of torque can be transferred to the tire with traction.



SERVICEABILITY FEATURES

To insure proper efficient servicing, the Kawasaki 70ZII offers many features. All grease fittings are located for easy access. Convenient panels and hinged hoodsides make routine service checks

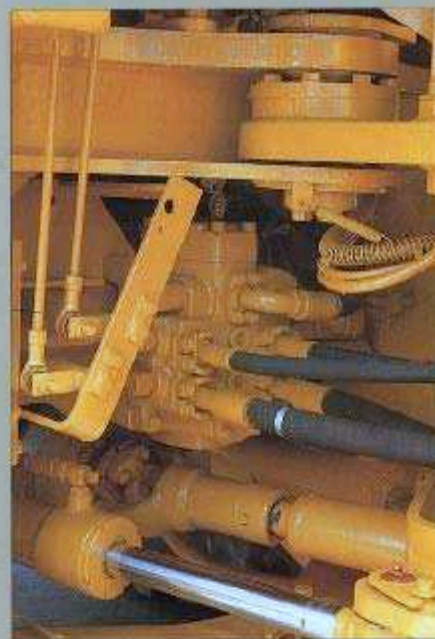


simple. All flange fittings are SAE for easy, convenient replacement. A tire inflator and tool kit are standard. Planetary gears are easily accessible by being located outboard of the wheel.



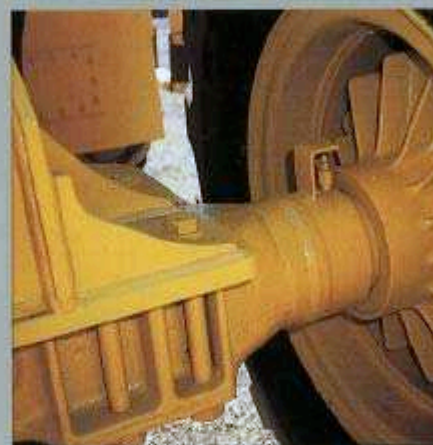
PRESSURIZED HYDRAULICS

The hydraulic tank is pressurized to keep the hydraulic oil cleaner, longer. The large tank capacity reduces oil temperatures. Since heat causes faster aging of hoses and seals, cooler oil keeps the 70ZII dry longer.



SEALED, WET-DISC BRAKES

The 70ZII has sealed wet-disc brakes located in each wheel for easy servicing. These high capacity, long-life brakes are protected from the environment. The brake systems for the front and rear axles are separated for added safety. Full brake and brake/declutch capability is available by separate pedals in the operator's compartment.





KAWASAKI'S PDC SYSTEM

Kawasaki understands the need for timely delivery of parts to any of its users. To provide an unsurpassed level of service in this area, Kawasaki maintains an extremely high level of parts availability and fast response from our parts distribution network and dealers.



KAWASAKI HISTORY

The dependable Kawasaki loader is manufactured by Kawasaki Heavy Industries. Kawasaki is a large industrial manufacturer of ships, aircraft, locomotives, robots, plants, hydraulic components, and motorcycles, as well as a variety of construction equipment. The first Kawasaki articulated loader was manufactured in 1962, making Kawasaki a true pioneer in the loader market. The Kawasaki loaders are sold in over 100 countries. Kawasaki is one of the largest loader manufacturers in the world.



KAWASAKI LOADERS MANUFACTURING CORP., USA

The Kawasaki commitment has been further demonstrated with the establishment of Kawasaki Loaders Manufacturing Corp., USA (KLMC). This new factory, located southwest of Atlanta, is dedicated to providing the same high quality product Kawasaki has become known for. The outstanding product and support we offer through dedicated independent dealers completes this commitment to you.

OPERATING SPECIFICATIONS

70zII

ENGINE

Make/Model/Fuel type	CUMMINS/6BTA 5.9-C/Diesel
Type	4 cycle, watercooled, turbocharged, after-cooled, direct injection
Net flywheel horsepower	158HP/2400 rpm
Number of cylinders	6
Bore and stroke	4.02" x 4.72" (102 mm x 120 mm)
Total displacement	359.0 in. ³ (5883 cm ³)
Alternator (Delco)	AC 24V-1560W (65 AMP)
Starting motor	24V-3.0kW (4 HP)
Battery	12V-150Ah, 2 Units
Governor	All speed, mechanical type

TORQUE CONVERTER AND TRANSMISSION SPECIFICATIONS

Torque converter	3 elements, single stage
Torque stall ratio	3.65 : 1
Main clutch	Wet hydraulic, multi-disc type
Cooling method	Forced circulation type
Transmission	Full power shift, 4-speed forward & reverse (Transmission neutralized when parking brake is applied.)
Max Speeds	Forward 22.4 MPH (36.0 Km/h) Reverse 22.4 MPH (36.0 Km/h)

SERVICE REFILL CAPACITY

LOCATION	CLASSIFICATION	CAPACITY-Gal (Lit)
Engine	Cooling water	7.7 (29)
Fuel tank	Diesel fuel	58.1 (220)
Engine (oil pan)	Engine oil	3.7 (14)
Front Axle	Gear oil	12.7 (48)
Rear Axle	Gear oil	13.5 (51)
Gear box	Gear oil	0.4 (1.5)
Torque converter and transmission	Engine oil	7.9 (30)
Hydraulic system (including tank)	Hydraulic oil	43.6 (165)
Brake oil tank	Engine oil	0.4 (1.5)

HYDRAULIC AND STEERING SYSTEM

Type	Articulated frame steering	
Steering mechanism	Hydraulic power steering unit, mechanical follow-up	
Lift (boom) cylinder	Two (2) double-acting piston type: φ5.5" × 29.7" (φ140mm × 754mm)	
Tilt (bucket) cylinder	One (1) double-acting piston type: φ6.3" × 19.8" (φ160mm × 502mm)	
Steering cylinder	Two (2) double-acting piston type: φ3.1" × 15.0" (φ80mm × 380mm)	
Steering oil pump	Gear type: 26GPM @ 1,800rpm (100 l/min @ 1,800rpm)	
Main pump	Gear type: 11 GPM @ 1,800rpm (40 l/min @ 1,800rpm)	
Relief set pressure	Loading	3000 psi (210 kg/cm ²)
	Steering	3000 psi (210kg/cm ²)
HYDRAULIC CYCLE TIME: *		
Lifting time (at full load)	6.2 sec.	
Lowering time (empty)	3.1 sec.	
Bucket dumping time	1.2 sec.	
TOTAL	10.5 sec.	
*Measured in accordance with SAE J732 C.		

AXLE SYSTEM

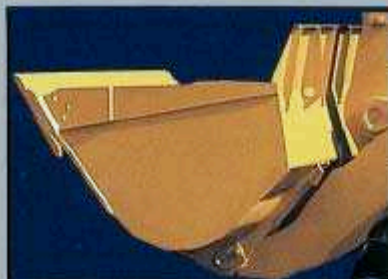
Drive system	4-wheel drive
Front and rear axle	Full floating banjo type
Tires	Standard: 20.5-25-12PR (L-2) Optional: 20.5-25-12PR (L-3) 23.5-25-12PR (L-2) 23.5-25-12PR (L-3)
Reduction and differential gear	Torque proportioning type, Spiral bevel gear, 1 stage reduction.
Final reduction gear	Outboard mounted, internal planetary gear
Oscillation angle	± 12° (total: 24°)




BRAKE SYSTEM

Service brakes	4 wheel air over hydraulic wet disc brake
Parking brake	Spring applied air released type (Transmission neutralized when parking brake applied)
Emergency brake	Same as parking, applied on failure in air or brake fluid line.

OPERATING SPECIFICATIONS / BUCKET DATA

70zII



			General Purpose		Material Handling
			Straight Edge With Bolt-on Cutting Edge GSC720*	Straight Edge with Bolt on Teeth GST720*	Straight Edge With Bolt on Cutting Edge and Spill Plate
					
Capacity	Heaped	yd ³ (m ³)	3.25 (2.5)	3.0 (2.3)	3.5 (2.7)
	Struck	yd ³ (m ³)	2.8 (2.1)	2.6 (2.0)	3.1 (2.4)
Recommended Material Density		lb/yd ³ (kg/m ³)	2900 (1700)	2900 (1700)	2500 (1500)
Maximum Dumping Clearance		ft-in (mm)	9'7/8" (2,765)	8'9 1/2" (2,680)	9'7/8" (2,765)
Dumping Reach (to front of bucket edge or teeth)		ft-in (mm)	3'5 1/2" (1,055)	3'8 1/8" (1,120)	3'5 1/2" (1,055)
Digging Depth		ft-in (mm)	2 1/8" (55)	2 3/4" (70)	2 1/8" (55)
Breakout Force		lb (kg)	28,670 (13,000)	30,210 (13,700)	28,670 (13,000)
Bucket tilt-back angle	(at ground level) degree		41	41	41
	(at carry position) degree		50	50	50
Overall	Length	ft-in (mm)	24'1/4" (7,320)	24'5 1/8" (7,445)	24'1/4" (7,320)
	Height	ft-in (mm)	11'1 1/4" (3,385)	11'1 1/4" (3,385)	11'1 1/4" (3,385)
	Width (Outside Tire)	ft-in (mm)	8'7 3/4" (2,635)	8'7 3/4" (2,635)	8'7 3/4" (2,635)
	Width (Outside Bucket)	ft-in (mm)	8'9 1/8" (2,670)	8'9 1/8" (2,670)	8'9 1/8" (2,670)
Wheel Base		ft-in (mm)	10'1/8" (3,050)	10'1/8" (3,050)	10'1/8" (3,050)
Min. Turning Radius	at outside bucket	ft-in (mm)	19'9 3/4" (6,040)	19'11" (6,070)	19'9 3/4" (6,040)
	at center of outside tire	ft-in (mm)	17'1/2" (5,195)	17'1/2" (5,195)	17'1/2" (5,195)
Min. Ground Clearance		ft-in (mm)	1'6 3/8" (465)	1'6 3/8" (465)	1'6 3/8" (465)
Full Articulation Angle		degree	40	40	40
Operating Weight (with ROPS Cab)		lb (kg)	29,700 (13,470)	29,500 (13,380)	29,760 (13,500)
Static Tipping Load (with ROPS Cab)	Straight	lb (kg)	23,270 (10,555)	23,525 (10,670)	23,215 (10,530)
	Full Turn	lb (kg)	19,955 (9,050)	20,175 (9,150)	19,895 (9,025)

The Weight and Load figure include ROPS Cab, 23.5-25-12PR (L-2) Tires, full fuel tank and operator.

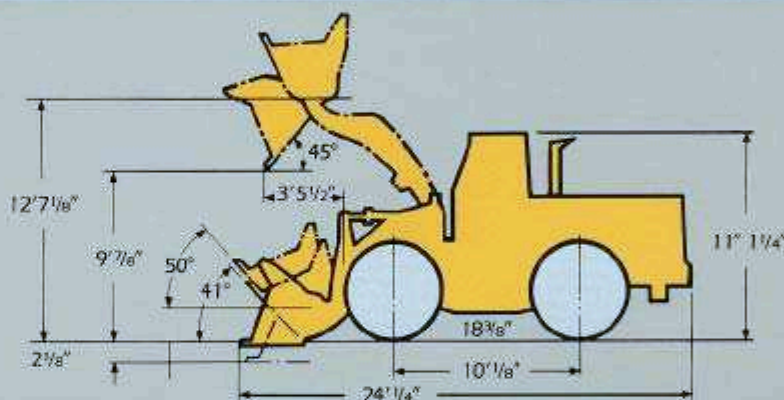
*Measured in accordance with SAE J732 and J742.

Courtesy of MachineMarket

WEIGHTS AND DIMENSIONS (SUPPLEMENTAL DATA)

Base Tire: 23.5-25-12PR(L-2)		Operating Weight	Tipping Load		Overall Width (Outside Tire)	Tread	Change in Vertical Dimension	Overall Length
			Straight	Full Turn				
ROPS Canopy (Instead of ROPS Cab)	lb (kg)	-770 (-350)	-730 (-330)	-630 (-285)				
Remove ROPS Cab	lb (kg)	-1,480 (-670)	-1,340 (-610)	-1,200 (-550)			-1' 3/4" (-325)	
Counter Weight	lb (kg)	+660 (+300)	+1,570 (+710)	+1,350 (+610)				+2" (+50)
Tires: 20.5-25-12PR(L-2)	lb (kg)	-1,610 (-730)	-1,235 (-560)	-1,060 (-480)	-2" (-50)	+1 5/8" (+40)	-2 3/8" (-60)	
20.5-25-12PR(L-3)	lb (kg)	-1,310 (-595)	-1,005 (-455)	-860 (-390)	-2" (-50)	+1 5/8" (+40)	-2 3/8" (-60)	
23.5-25-12PR(L-3)	lb (kg)	+420 (+190)	+320 (+145)	+275 (+125)				
20.5-25-12PR(L-2) with 75% CaCl ₂ for logging	lb (kg)	+190 (+85)	+1,530 (+690)	+1,310 (+590)	-2" (-50)	+1 5/8" (+40)	-2 3/8" (-60)	
20.5-25-12PR(L-3) with 75% CaCl ₂ for logging	lb (kg)	+485 (+220)	+1,760 (+800)	+1,505 (+680)	-2" (-50)	+1 5/8" (+40)	-2 3/8" (-60)	
Air Conditioner	lb (kg)	+220 (+100)	+260 (+120)	+220 (+100)				
Belly Guard (Rear Frame)	lb (kg)	+120 (+55)	+110 (+50)	+90 (+40)				

Tread 6' 7 1/8" (2,010)
 Width (Outside Tire) 8' 7 3/4" (2,635)
 Width (Outside Bucket) 8' 9 1/8" (2,670)
 Equipped with GSC 720* bucket with bolt on cutting edge, 23.5 - 25 - 12 PR Tires and ROPS Cab.



STANDARD EQUIPMENT

Adjustable steering column Air cleaner (Donaldson with automatic dust ejector) Air compressor Alarms - Audible: air pressure, engine oil pressure, brake fluid, parking brake w/transmission engaged Alarms - Visual: engine water temperature, torque converter oil temperature, engine oil pressure, air pressure, brake fluid, air filter clogging, parking brake, battery discharge	Alternator-24V-65 amp Batteries two (2)-12V-150Ah Boom lift kick-out Bucket positioner Cold start ether system Draw Bar Emergency brake Engine side panel Fenders - (front and rear) Filtration system (replaceable elements) Frame lock Fuel tank water separator	Gauges: air pressure, engine water temperature, torque converter oil temperature, hour meter, fuel level, hydraulic oil level indicator Horn (electric) Indicator lights: working light, high beam Ladder (access at both sides) Lights: (two [2] headlights, two [2] stop & tail lights, two [2] rear lights) Neutral safety start Bolt-on Counter weight	Parking brake (spring applied air released type) Reverse alarm ROPS canopy Seatbelt Seat (adjustable suspension type) Special tool kit Switches: cold start, lights - front & rear, pilot light check, starter Tires - four (4) 20.5-25-12PR (L-2) Tire inflation kit Torque proportioning differentials Transmission declutch Vandalism protection
---	---	---	--

OPTIONAL EQUIPMENT

Air conditioner, with heater and defroster Air dryer Belly guard Bolt on counterweight (instead of rear tire ballast) Bolt-on cutting edge Bolt-on wear plate	Bucket (see data chart) Emergency steering (special option) Heater Hydraulic system - three-spool valve, control lever, linkage and lines	Rear working lights ROPS cab; enclosed, with sound suppression, front and rear windshield wipers and washers, front working lights, defroster fan and rear view mirrors	Tires (set of four): 20.5-25-12PR (L-3) 23.5-25-12PR (L-2) 23.5-25-12PR (L-3) Turn signal with four way flasher
--	--	--	---

Specifications are subject to change without notice.

Courtesy of MachineMarket

70zII



 **Kawasaki**
KAWASAKI CONSTRUCTION MACHINERY
CORP. OF AMERICA

2140 Barrett Park Drive
Suite 101
Kennesaw, GA 30144
Tel: (770) 499-7000
Fax: (770) 421-6842