

80ZIII



80ZIII

SUMMARY OF FEATURES

- The reliable, fuel efficient Cummins 6CT 8.3-C engine supplies high torque and a big 178 hp.
- The 4-speed powershift transmission speeds cycles with soft shift and convenient twist grip lever.
- Sealed, Z-linkage for high breakout force and easy digging.
- High capacity, sealed wet-disc brakes provide long service life, with protection from the operating environment.
- High-bias, torque proportioning differentials reduce wheel spin in slippery conditions.
- Tight turning diameter offers excellent maneuverability.
- Large 23.5 x 25 tire provides excellent flotation and high load capacity.
- High volume pressurized hydraulic tank keeps oil cleaner, longer.
- Safety features include separate brake systems front and rear, emergency brake, major system monitor, reverse alarm, neutral start, and optional emergency steering.
- Operator features include isolated, sound suppressed cab, adjustable steering column, suspension seat, bucket leveler and boom kickout.
- Service features include sealed linkage pins, remote mounted grease fittings, tire inflation kit, and hinged hood-sides.
- KLEW – Kawasaki Loaders Early Warning Oil Analysis program measures wear metals and contaminants in the oil to monitor wear rates of major components. This sophisticated test allows overhauls to be scheduled to reduce downtime and costs.



CUMMINS ENGINE

The reliable Cummins 6CT 8.3-C diesel provides 178 hp. Fuel economy is outstanding. Cold start kit is standard. Resilient engine mounts reduce vibration and noise. Two stage Donaldson air cleaner protects the engine. Cummins engines are supported by an extensive nationwide dealer network.



SEALED, WET-DISC BRAKES

The air-over hydraulic, outboard mounted, wet-disc brake system has high capacity, long-life and added protection from harsh elements. The brake system for the front and rear axles are separated for added safety. Full brake and brake/declutch capabilities are available by different pedals in the operator's compartment.



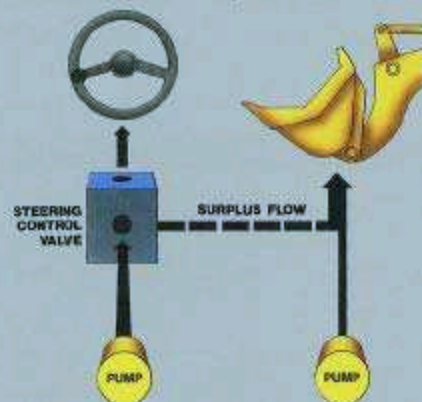
4-SPEED TRANSMISSION

The soft shift transmission reduces shift shock, speeds cycles and protects the powertrain. The single twist-grip shift lever makes changing gears or direction very simple.



ENERGY-EFFICIENT HYDRAULICS

The ZIII series loaders all incorporate energy efficient hydraulics. The unused steering fluid is utilized by the loading circuit. This gives excellent performance with low horsepower drain. The 80ZIII tank is pressurized to keep hydraulic oil cleaner, longer. This large capacity design reduces oil temperature and heat on hoses, seals and other components, adds life, keeping the 80ZIII dry longer. To insure these high standards of quality, Kawasaki hydraulically tests each loader.



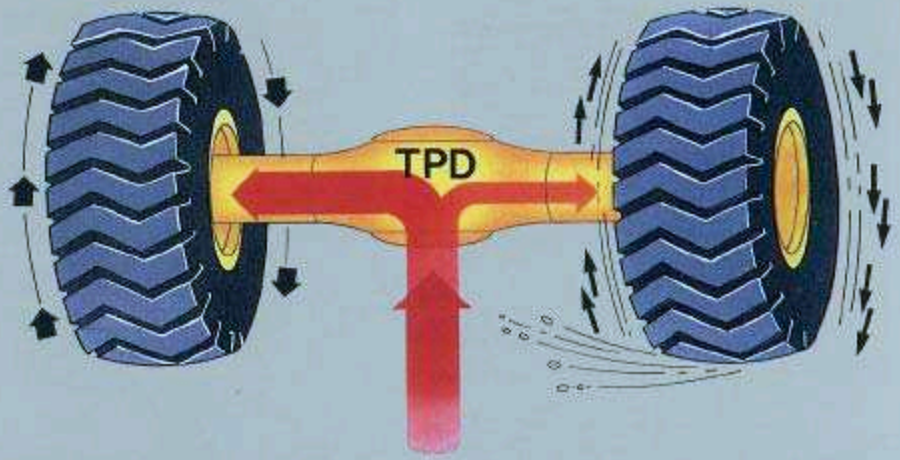
SEALED Z-LINKAGE

The Z-linkage provides high breakout force for digging tough material. The 50° bucket rollback permits carrying the full load without spillage. The linkage pins are sealed to retain lubricant. The bucket pins are sealed for extra protection.



HIGH-BIAS, TORQUE PROPORTIONING DIFFERENTIAL

The standard TPD reduces tire spin in soft or slippery conditions. The 80ZIII has an industry high, bias-ratio which can transfer up to 70% of torque to the non-spinning wheel, adding both tire life and productivity.



OPERATOR COMFORT

The comfortable ROPS cab is rubber mounted and sealed to reduce vibration and sound levels. The cab is well appointed with tinted glass, sliding windows, front and rear wipers and washers, defroster fan, side mirrors and interior rearview mirrors. The fully adjustable suspension seat and adjustable steering column provide added comfort. Excellent visibility in all directions improves cycle times and safety.



COUPLER VERSATILITY

The 80ZIII with a quick coupler can be utilized to perform almost any job whether backfilling a ditch, laying or carrying pipe, sweeping, carrying logs or clearing snow. The 80ZIII adds economy to any work site. And a third hydraulic valve is easily added, if needed.

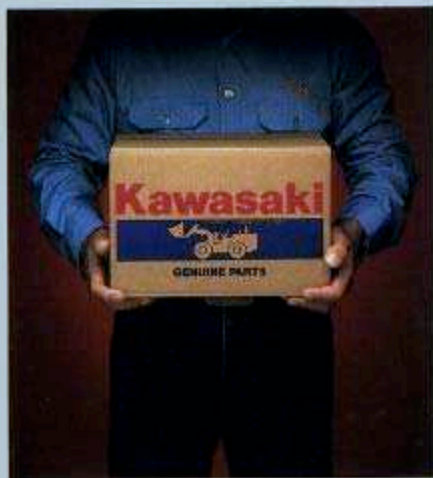


SERVICEABILITY

The 80ZIII offers many features for proper efficient servicing. All grease fittings can be reached from ground level. Many of the fittings are grouped together. Convenient panels and hinged hood sides make routine service checks simple. Many hoses share commonality. Engine and oil filters are of spin-on design. A tire inflator and special tool kit are standard.



KAWASAKI ZIII SUPPORT



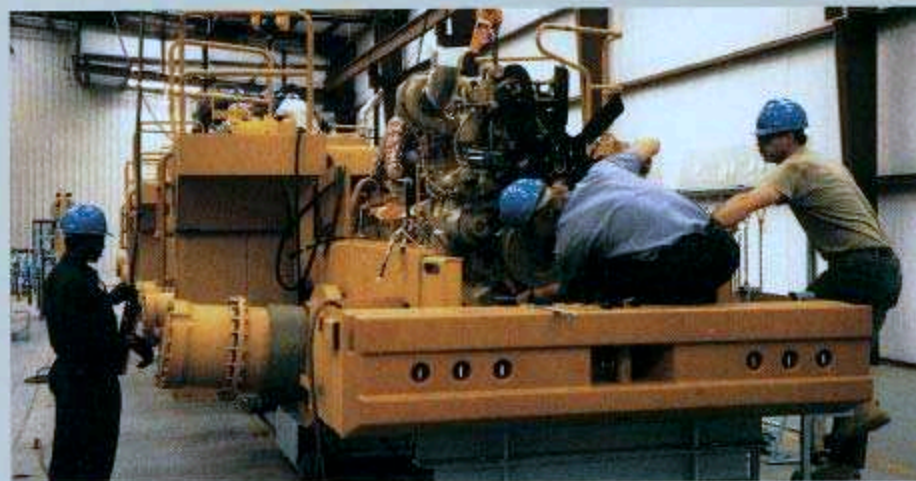
KAWASAKI'S PDQ

Kawasaki understands the need for timely delivery of parts to any of its users. To provide an unsurpassed level of service in this area, Kawasaki maintains an extremely high level of parts availability and fast response from our parts distribution network and dealers.



KAWASAKI LOADERS MANUFACTURING CORP., USA

The Kawasaki commitment has been further demonstrated with the establishment of Kawasaki Loaders Manufacturing Corp., USA (KLMC). This new factory, located southwest of Atlanta, is dedicated to providing the same high quality product Kawasaki has become known for. The outstanding support we offer through dedicated independent dealers completes this commitment to you.



KAWASAKI HISTORY

The dependable Kawasaki loader is manufactured by Kawasaki Heavy Industries. Kawasaki is a large industrial manufacturer of ships, aircraft, locomotives, robots, plants, hydraulic components, and motorcycles, as well as a variety of construction equipment. The first Kawasaki articulated loader was manufactured in 1962, making Kawasaki a true pioneer in the loader market. Kawasaki loaders are sold in over 100 countries and Kawasaki is one of the largest loader manufacturers in the world today.

OPERATING SPECIFICATIONS

80ZIII

ENGINE

Make/Model/ Fuel Type	CUMMINS/6CT-8.3-C/Diesel
Type	4 cycle, watercooled, turbocharged direct injection
Horsepower rating at flywheel	178 HP/2200 rpm
Maximum torque	557 ft-lb (77kgm)/1500rpm
Number of cylinders	6
Bore and stroke	ϕ 4.49" × 5.32" (ϕ 114mm × 135mm)
Total displacement	504.5 in ³ (8268 cm ³)
Alternator	AC24V-1560W, 165AMP
Starting motor	24V-7.5k(10HP)
Battery	12V-150Ah, 2 Units
Governor	all speed, mechanical type

TORQUE CONVERTER AND TRANSMISSION SPECIFICATIONS

Torque converter	3 elements, single stage	
Torque stall ratio	3.06:1	
Main clutch	wet hydraulic, multi-disk type	
Cooling method	forced circulation type	
Transmission	full power shift, 4 speed forward & reverse	
Speeds	Forward	1st: 4.2 MPH (6.8 km/h) 2nd: 7.9 MPH (12.7 km/h) 3rd: 15.1 MPH (24.3 km/h) 4th: 22.7 MPH (36.6 km/h)
	Reverse	1st: 4.3 MPH (6.9 km/h) 2nd: 8.0 MPH (13.0 km/h) 3rd: 15.3 MPH (24.7 km/h) 4th: 22.9 MPH (37.0 km/h)

AXLE SYSTEM

Drive system	4-wheel drive
Front and rear axle	full floating banjo type
Tires	Standard: 23.5-25-16PR (L-3) Optional: 20.5-25-16PR (L-2) 20.5-25-16PR (L-3) 23.5-25-16PR (L-2)
Reduction and differential gear	spiral bevel gear, 1 stage reduction
Final reduction gear	outboard mounted, internal planetary gear
Oscillation angle	± 12° (total 24°)

HYDRAULIC AND STEERING SYSTEM

Type	articulated frame steering	
Steering mechanism	hydraulic power steering unit, mechanical follow-up	
Lift (boom) cylinder	two (2) double-acting piston type: ϕ 5.9" × 31.0" (ϕ 50mm × 788mm)	
Tilt (bucket) cylinder	one (1) double-acting piston type: ϕ 7.1" × 20.6" (ϕ 180mm × 523mm)	
Steering cylinder	two (2) double-acting piston type: ϕ 3.1" × 15.9" (ϕ 80mm × 405mm)	
Main Pump	gear type: 22.5 GPM/1000 psi @ 2200 rpm (85 LPM/70kg/cm ² @ 2200 rpm)	
Steering oil pump	gear type: 50.2 GPM/1000 psi @ 2200 rpm (190 LPM/70kg/cm ² @ 2200 rpm)	
Relief set pressure	Loading	2990 psi (210 kg/cm ²)
	Steering	2990 psi (210 kg/cm ²)
HYDRAULIC CYCLE TIME:*		
Lifting time (at full load)	6.2 sec.	
Lowering time (empty)	3.4 sec.	
Bucket dumping time	1.4	
TOTAL	11.0	

*Measured in accordance with SAE J732C.

SERVICE REFILL CAPACITY

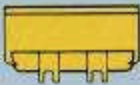
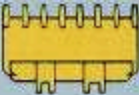

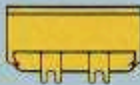
LOCATION	CAPACITY Gal (Lit)	
Engine (Coolant)	14.5	(55)
Fuel Tank	63.4	(240)
Engine (oil pan)	6.1	(23)
Front axle	14.5	(55)
Rear axle	14.5	(55)
Gear box	0.1	(0.4)
Torque converter and transmission	9.2	(35)
Hydraulic system (including tank)	38.3	(145)
Brake oil tank	0.4	(1.5)

BRAKE SYSTEM

Service brakes	4 wheel air over hydraulic wet disc brake
Parking brake	spring applied air released type, located in front drive shaft
Emergency brake	same as parking, applied on failure in air or brake fluid line.

OPERATING SPECIFICATIONS / BUCKET DATA

80ZIII

			General Purpose		Material Handling	High Lift*
			With Bolt-on Cutting Edge	With Teeth	With Bolt-on Cutting Edge	Material Handling With Bolt-on Cutting Edge
						
Capacity	Heaped	yd ³ (m ³)	3.75 (2.8)	3.5 (2.7)	4.0 (3.1)	3.75 2.8
	Struck	yd ³ (m ³)	3.3 (2.5)	3.0 (2.3)	3.5 (2.7)	3.3 2.5
Maximum Dumping Clearance		ft-in (mm)	9'2 ³ / ₈ " (2815)	8'11 ¹ / ₈ " (2730)	8'11 ¹ / ₈ " (2725)	10'8 ³ / ₈ " (3270)
Dumping Reach (to front of bucket edge or tooth)		ft-in (mm)	3'9 ⁶ / ₈ " (1165)	4'1 ¹ / ₈ " (1230)	3'9 ⁶ / ₈ " (1158)	3'11 ¹ / ₈ " (1195)
Bucket Hinge Pin Height		ft-in (mm)	12'11 ¹ / ₈ " (3955)	12'11 ¹ / ₈ " (3955)	12'11 ¹ / ₈ " (3955)	14'1 ¹ / ₈ " (4315)
Digging Depth		ft-in (mm)	1" (25)	1" (25)	1" (25)	1" (25)
Breakout Force		lb (kg)	35280 (16000)	35280 (16000)	31505 (14290)	32520 (14750)
Bucket tilt-back angle		[at ground level]	43.5°	43.5°	43.5°	43.5°
		[at carry position]	50°	50°	50°	50°
Overall	Length	ft-in (mm)	25'1 ¹ / ₈ " (7650)	25'6 ¹ / ₈ " (7775)	25'2 ¹ / ₈ " (7674)	26'3" (8000)
	Height	ft-in (mm)	11'2 ³ / ₈ " (3425)	11'2 ³ / ₈ " (3425)	11'2 ³ / ₈ " (3425)	11'2 ³ / ₈ " (3425)
	Width (Outside Tire)	ft-in (mm)	8'9 ¹ / ₈ " (2685)	8'9 ¹ / ₈ " (2685)	8'9 ¹ / ₈ " (2685)	8'9 ¹ / ₈ " (2685)
	Width (Outside Bucket)	ft-in (mm)	9'2 ¹ / ₄ " (2800)	9'2 ¹ / ₄ " (2800)	9'2 ¹ / ₄ " (2800)	9'2 ¹ / ₄ " (2800)
Wheel Base		ft-in (mm)	10'6" (3200)	10'6" (3200)	10'6" (3200)	10'6" (3200)
Min. Turning Radius	At Outside Bucket	ft-in (mm)	20'9 ¹ / ₈ " (6330)	20'10 ¹ / ₂ " (6360)	20'10" (6350)	21'3 ¹ / ₂ " (6490)
	At Center of Outside tire	ft-in (mm)	17'9 ¹ / ₈ " (5430)	17'9 ¹ / ₈ " (5430)	17'9 ¹ / ₈ " (5430)	17'10 ¹ / ₈ " (5450)
Minimum Ground Clearance		ft-in (mm)	1'6 ¹ / ₈ " (460)	1'6 ¹ / ₈ " (460)	1'6 ¹ / ₈ " (460)	1'6 ¹ / ₈ " (460)
Full Articulation Angle		degree	40°	40°	40°	40°
Operating Weight (with ROPS cab)		lb (kg)	34570 (15680)	34350 (15580)	34670 (15726)	35035 (15890)
Static Tipping Load (with ROPS Cab)	Straight	lb (kg)	26390 (11970)	27225 (12350)	25750 (11680)	22370 (10150)
	Full Turn	lb (kg)	22620 (10260)	23325 (10580)	22740 (10314)	19310 (8760)

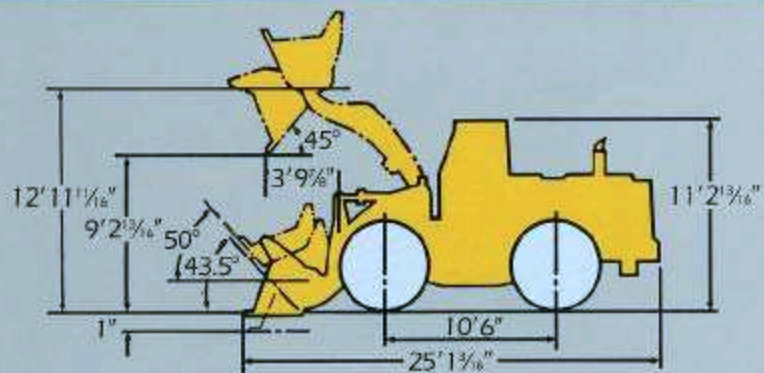
The Weight and Load figure include Enclosed ROPS Cab, 23.5-25-16PR (L-3) Tires, full fuel tank and operator. Measured in accordance with SAE J732 and SAE 742

*Refer to Material Density Chart for proper bucket selections.

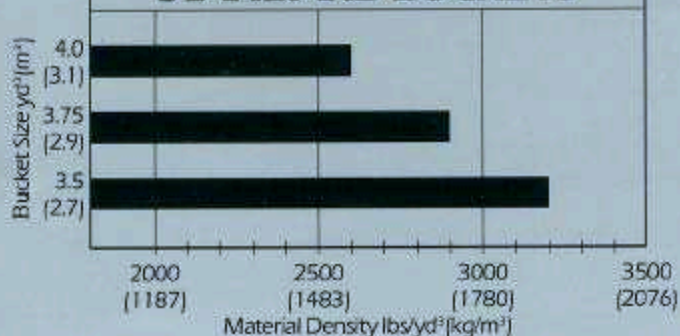
WEIGHTS AND DIMENSIONS (SUPPLEMENTAL DATA)

		Operating Weight	Tipping Load		Overall Width (Outside Tire)	Tread	Vertical Dimensions	Overall Length	
			Straight	Full Turn					
ROPS Canopy (Instead of ROPS Cab)	lb (kg)	-705 (-320)	-660 (-300)	-560 (-255)	in (mm)				
Remove ROPS Canopy and Cab	lb (kg)	-1480 (-670)	-1390 (-630)	-1190 (-540)	in (mm)		-7 $\frac{1}{8}$ " (-200)		
Counter Weight	lb (kg)	+680 (+310)	+1580 (+720)	+1340 (+610)	in (mm)			+2 $\frac{3}{8}$ " (+60)	
Tires:	lb (kg)	-445 (-200)	-335 (-150)	-285 (-130)	in (mm)				
23.5-25-12PR (L-2)									
20.5-25-16PR (L-2)	lb (kg)	-1875 (-850)	-1435 (-650)	-1235 (-560)	in (mm)	-1 $\frac{1}{8}$ " (-40)	+1 $\frac{1}{8}$ " (+40)	-2 $\frac{3}{8}$ " (-60)	+1 $\frac{5}{8}$ " (+50)
20.5-25-16PR (L-3)	lb (kg)	-1615 (-734)	-1235 (-560)	-1070 (-485)	in (mm)	-1 $\frac{1}{8}$ " (-40)	+1 $\frac{1}{8}$ " (+40)	-2 $\frac{3}{8}$ " (-60)	+1 $\frac{5}{8}$ " (+50)
20.5-25-16PR (L-2) with 75% CaCl ₂	lb (kg)	-635 (-285)	-485 (-220)	-420 (-190)	in (mm)	-1 $\frac{1}{8}$ " (-40)	+1 $\frac{1}{8}$ " (+40)	-2 $\frac{3}{8}$ " (-60)	+1 $\frac{5}{8}$ " (+50)
20.5-25-16PR (L-3) with 75% CaCl ₂	lb (kg)	-375 (-170)	-290 (-130)	-255 (-115)	in (mm)	-1 $\frac{1}{8}$ " (-40)	+1 $\frac{1}{8}$ " (+40)	-2 $\frac{3}{8}$ " (-60)	+1 $\frac{5}{8}$ " (+50)
Air Conditioner	lb (kg)	+220 (+100)	+200 (+90)	+150 (+70)	in (mm)				
Belly Guard (Rear Frame)	lb (kg)	+120 (+55)	+90 (+40)	+90 (+40)	in (mm)				

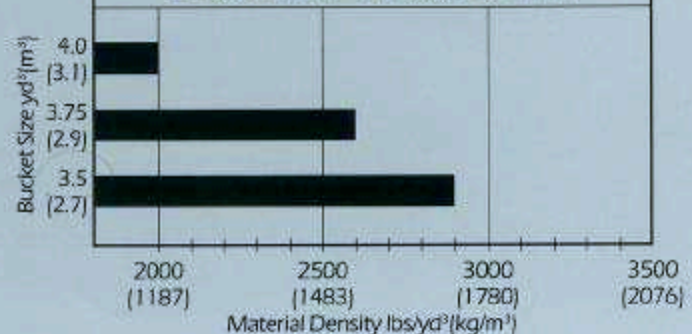
Tread 6'9 $\frac{1}{8}$ " (2060)
 Width (Outside Tire) 8'9 $\frac{1}{8}$ " (2685)
 Width (Outside Bucket) 9'2 $\frac{1}{4}$ " (2800)
 Equipped with GSC bucket
 with bolt-on cutting edge
 23.5-25-16PR (L-3) TIRE and ROPS Cab.



BUCKET SELECTION GUIDE STANDARD BUCKETS



BUCKET SELECTION GUIDE HIGH LIFT BUCKETS



STANDARD EQUIPMENT

Adjustable steering column Air cleaner (double element type) Alarms, audible air pressure brake oil engine oil pressure parking brake with transmission engaged Alarms, visual air pressure air filter clogging battery discharge brake oil engine oil pressure engine water temperature parking brake torque converter oil temperature	Alternator 24V - 65 amp Battery Two 12V - 150 Ah Boom lift kick out Bucket leveler Cold start Draw bar Emergency brake Engine coolant expansion tank Fenders (front and rear) Frame lock Gauge air pressure engine water temperature fuel level torque converter oil temperature	hour meter hydraulic oil level indicator Horn (electric) Indicator lights high beam working light Ladder (access to both sides) Lights two head lights two rear lights two stop, back-up & tail lights Neutral safety start Parking brake (spring applied air release type) Reverse alarm	ROPS canopy Seat (adjustable suspension type) Seat belt Special tool kit Switches cold start lights (front and rear) parking brake transmission declutch Tires 23.5-25-16PR (L-3) Tire inflation kit Transmission declutch Vandalism protection
--	--	--	--

OPTIONAL EQUIPMENT

Air conditioner with heater and defroster Air dryer Belly guard Bolt-on counterweight Bolt-on cutting edge Bolt-on wear plate	Buckets (see bucket data) Emergency steering* Heater Rear working lights	ROPS cab: enclosed, with sound suppression, front and rear windshield wipers and washers, front working lights, defroster fan and rear view mirrors	Tires 20.5-25-16PR (L-2) 20.5-25-16PR (L-3) 23.5-25-12PR (L-2) Turn signal and four-way flasher Three spool valve control kit
--	---	---	--

*Special order



Kawasaki
KAWASAKI CONSTRUCTION MACHINERY
CORP. OF AMERICA

2140 Barrett Park Drive
Suite 101
Kennesaw, GA 30144
Tel: (770) 499-7000
Fax: (770) 421-6842