



95HP | 2.0 – 2.4 yd³
BUCKET CAPACITY

152HP | 2.75 – 3.1 yd³
BUCKET CAPACITY

152HP | 3.1 – 3.5 yd³
BUCKET CAPACITY

60_{Z7} **62_{Z7}** **67_{Z7}**



ONE FOCUS. COMPLETE SOLUTIONS.

INTRODUCING A NEW E.P.I.C. GENERATION

60Z7
62Z7
67Z7

60Z7, 62Z7 AND 67Z7 FEATURES:

- Fuel efficient engines
- Electronically-controlled HST
- Limited slip differentials*
- Comfortable cab
- Great visibility
- Easy read LCD display
- Smooth shifting
- Quiet

* 62Z7/67Z7 only

EFFICIENT. POWERFUL. INTELLIGENT. COMFORTABLE.

Kawasaki pioneered the Z-Link design to provide unmatched utility, high breakout force and efficiency in its loaders. The Z7 generation implements brand-new patented technology, industry exclusive innovation, and input from owners and operators all over the world. We've engineered the Z7 series from the ground up!

EFFICIENT

The HST powertrain automatically adjusts tractive effort and loading force, to improve operating efficiency and reduce operating costs.

POWERFUL

Custom Operating Power Modes, made available through the IntelliTech Operating System, maximize a High Engine Power Rating to provide power on demand.

INTELLIGENT

The Kawasaki IntelliTech Operating System uses logic and intelligence to adjust the operating characteristics of the loader. Our intuitive system captures every aspect of working conditions and operating demands to adjust the powertrain and hydraulics for best application requirements.

COMFORTABLE

The new Z7 operator compartment features a low-profile dash, full-length glass doors, panoramic front window and well-organized storage areas—plus much more. We have total operator comfort in mind!



DEFINING A NEW STANDARD

Kawasaki defines a new standard in production class wheel loaders with the introduction of the 62Z7 and 67Z7—models that reflect the advanced engineering required to improve operating efficiencies while lowering operating costs through a highly intuitive, patented technology, the IntelliTech System.

IntelliTech is a family of technological innovations by Kawasaki to enhance the performance of the Z7 loader series. It is a comprehensive package of features that affects all phases of the wheel loader application.

These features use logic or intelligence to adjust the operating characteristics of the machine, sensing the working conditions and adjusting the powertrain and hydraulics to best match application or environmental requirements. Many of the IntelliTech operations are automatic, while others allow the operator to select functions appropriate for the application or work environment.

- 24-Hour Parts Service
- In House Rebuild Center
- Flexible Warranty Programs
- Custom Dealer Service Programs



Watch it
in Action

62Z7
67Z7



KCMA provides a totally focused approach to supporting your business. From carefully designed programs and services, to engineered special applications options, the 60Z7, 62Z7 and 67Z7 wheel loaders are ready to tackle the most demanding applications and environments.

62Z7/ 67Z7

EFFICIENT.



Efficiency is getting the job done with the least amount of waste. The Z7s are very efficient loaders. The hydraulic system is designed for maximum performance and efficiency. The systems and controls allow for efficient operation. And servicing is efficient and reduces operating costs even further.

- Efficient, proven Z-linkage for excellent digging performance
- Normal and Power modes match the full range of demand
- Extended engine oil change interval
- Accessible filters, ground level fueling, tank sight gauges, grouped grease fittings
- HN Bushings impregnated with high viscosity oil extend lubrication period to 500 hours on loader linkage pins
- Automatic reversing cooling fan, standard
- Excellent fuel consumption
 - Low engine speed with high loader speed



POWERFUL.

62Z7 / 67Z7

Power and productivity are what Kawasaki loaders are famous for. The Z7 has moved to another level in this area. Strong, responsive engines provide the power to get the job done. Powerful hydraulics make the work easy and the productivity high.

POWERFUL ENGINE

- ISUZU 4HK1 diesel engine
- Tier 4i Certified, clean
- Reliable
- Fuel efficient
- Responsive
- Adapted EGR technology reduces NOX and particulate matter.
- Auto-idle shutdown

POWERFUL HYDRAULICS

- Reliable gear pumps
- Excellent breakout force
- Fast, responsive
- Increased steering power

HST

- Traction control
- Creep switch/rotary setting
 - Fine controllability in low speed
- High speed travel at low RPM
- Powerful HST brake performance
- Inching/brake pedal provides smooth deceleration, natural braking



(l-r) Inching/Brake Pedals, Accelerator Pedal



62Z7/ 67Z7

INTELLIGENT.



INTELLITECH SYSTEM

- Automatic reversible cooling fan is controlled by multiple inputs for optimum operation
- Aerodynamic fan blade design for quiet operation
- Auto idle shut down senses excessive idling and shuts down engine to reduce fuel consumption.
- Patented IntelliDig system balances Rimpull force and Hydraulic digging force to match conditions
- Excellent rimpull power
 - Power dozing
 - Hill climbing
- SimulLoad system allows for simultaneous actuation of lift and tilt while digging

COMFORTABLE. 62Z7/ 67Z7



A comfortable operator is a productive operator. In the Kawasaki Z7s the operator comfort is outstanding. Quiet, convenient, clean, and designed for optimum operator comfort, safety, and productivity.

COMFORTABLE CAB

- Large, quiet, well-sealed ROPS cab with great visibility in all directions
- Deluxe, ergonomic air suspension seat can be equipped with heated cushions
- Tilt/telescoping steering column with pop-up pedal for convenient entry and exit
- High visibility front dash design
- Excellent ventilation from sliding side windows and full-length glass, latch-back doors
- Adjustable side console to fit operator preference
- Standard AM/FM/WB with AUX outlet and dual speakers
- Thermostatically controlled HVAC system for year-round climate control

- Convenient storage includes thermal storage box, cup holders, coat hook and large storage shelf



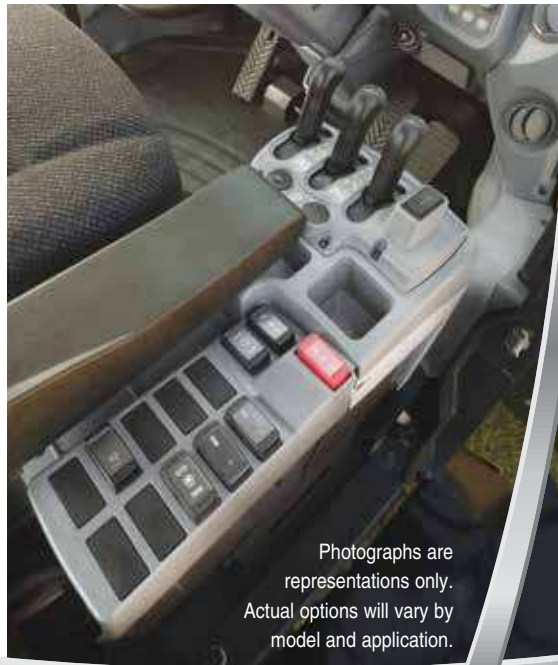
62Z7/ 67Z7

COMFORTABLE.

Improved Controllability. The Z7 operator compartment features a low profile dash with monochrome LCD monitor, full-length glass doors, panoramic front window, well organized storage areas, plus much more. We have total operator comfort in mind!

CONVENIENT CONTROLS

- The pilot controls, available in single or dual lever, also contain fingertip controls for the F/R button and Horn.
- The adjustable arm console contains rocker switches for convenient selection of the "Power Mode," "Dual Lift Arm Kick-Out," "Inching" and optional "Ride Control."
- Side control panel can be adjusted to fit operator preference.
- 12V outlet and 24V lighter outlet, dual interior lights



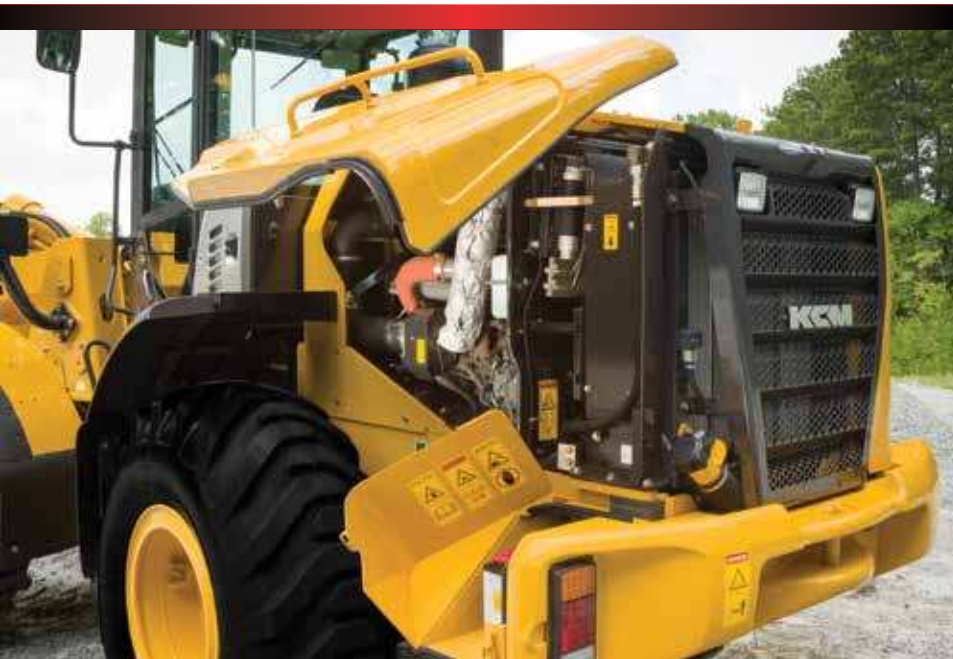
Photographs are representations only. Actual options will vary by model and application.



SERVICE SIMPLIFIED.

ACCESSIBILITY/SERVICEABILITY/DURABILITY

- Angled ladders
- Wide-access engine compartment doors, gull wing, metal
- Battery disconnect
- Easy access battery box
- Grouped lube points
- Ground level fluid check points
- Ground level fueling
- Fuse/relay panel in cab
- Autolube, optional
- HN bushings impregnated with high viscosity oil extend lubrication period to 500 hours on loader linkage pins
- Extended engine oil change interval
- Automatic reversing cooling fan, standard



FAILURE IS NOT AN OPTION.

Kawasaki is dedicated to keeping your wheel loader up and running, even in the most challenging situations. Starting with the KLEW (Kawasaki Loaders Early Warning) Oil Analysis System, designed to eliminate unnecessary maintenance and downtime, to our 24-hour parts shipment service, and our extensive rebuild program, Kawasaki has the expertise and experience to respond quickly to your needs.

Courtesy of MachineMarket

BUCKET DATA

6027

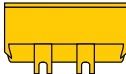
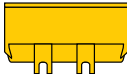
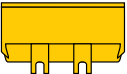


DEUTZ TCD36, 95 HP, 2.0–2.4 yd³ HST

- 2-Speed, High/Low
- Creep switch/rotary setting
 - Fine
- controllability in low speed
- High speed travel at low RPM
- Inching/brake pedal provides smooth deceleration, natural

Hydro-boost brake system



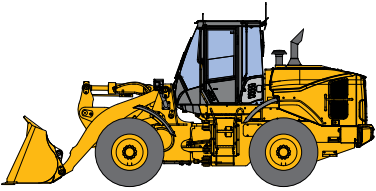
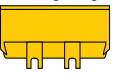
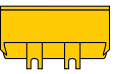

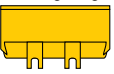
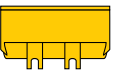

			General Purpose	Material Handling	High Lift
			With Bolt-on Cutting Edge	With Bolt-on Cutting Edge	Material Handling With Bolt-on Cutting Edge
					
Capacity	Heaped	yd ³ (m ³)	2.0 (1.5)	2.4 (1.8)	2.0 (1.5)
	Struck	yd ³ (m ³)	1.6 (1.2)	1.8 (1.4)	1.6 (1.2)
Maximum dumping clearance		ft-in (mm)	8'10 1/2" (2,705)	8'7 1/2" (2,630)	9'11 5/8" (3,040)
Dumping reach (to front of bucket edge or tooth)		ft-in (mm)	3'3 3/4" (1,010)	3'6 1/2" (1,080)	3'10 7/8" (1,190)
Max. hinge pin height		ft-in (mm)	11'8" (3,560)	11'8" (3,560)	12'9 1/2" (3,900)
Digging depth (with bucket level)		ft-in (mm)	2'3/4" (70)	2'3/4" (70)	8'5/8" (220)
Breakout force		lb (kN)	17,760 (79)	15,740 (70)	17,310 (77)
Bucket tilt-back angle	at ground level	degree	40°	40°	44°
	at carry position	degree	49°	49°	49°
Overall	Length	ft-in (mm)	21'3/4" (6,420)	21'4 3/4" (6,520)	22" (6,705)
	Height (to top of cab/ROPS)	ft-in (mm)	10'6 3/8" (3,210)	10'6 3/8" (3,210)	10'6 3/8" (3,210)
	Height (bucket fully raised)	ft-in (mm)	15'3" (4,650)	15'7 3/8" (4,760)	16'4 1/2" (4,990)
	Width (outside tire)	ft-in (mm)	7'5 3/8" (2,270)	7'5 3/8" (2,270)	7'5 3/8" (2,270)
	Width (outside bucket)	ft-in (mm)	8'1/2" (2,450)	8'1/2" (2,450)	8'1/2" (2,450)
Tread		ft-in (mm)	5'11 5/8" (1,820)	5'11 5/8" (1,820)	5'11 5/8" (1,820)
Wheel base		ft-in (mm)	8'11 1/4" (2,725)	8'11 1/4" (2,725)	8'11 1/4" (2,725)
Clearance circle (bucket carry position)	at outside of bucket	ft-in (mm)	35'7 1/2" (10,860)	35'9 7/8" (10,920)	36'9 3/4" (11,220)
	at outside tire	ft-in (mm)	32'3" (9,830)	32'3" (9,830)	32'3" (9,830)
Minimum ground clearance		ft-in (mm)	1'2 1/2" (370)	1'2 1/2" (370)	1'2 1/2" (370)
Full articulation angle		degree	40°	40°	40°
Operating weight (with ROPS cab)		lb (kg)	17,900 (8,120)	18,100 (8,210)	19,310 (8,760)
Static tipping load (with ROPS cab)	Straight	lb (kg)	13,560 (6,150)	13,400 (6,080)	10,580 (4,800)
	Full turn	lb (kg)	11,710 (5,310)	11,530 (5,230)	9,060 (4,110)

The weight and load figure includes optional counterweight, enclosed ROPS cab, air conditioner, 17.5-25-12PR (L-2) tires, full fuel tank and operator.

Materials and specifications are subject to change without notice and without obligation on the part of the manufacturer. The specifications supplied, while believed to be completely reliable, are not to be taken as warranty for which we assume legal responsibility.

BUCKET DATA

62Z7 / 67Z7

			62Z7			67Z7		
			Standard Boom	Material Handling	High Lift	Standard Boom	Material Handling	High Lift
			General Purpose Bucket With Bolt-on Cutting Edge 	Bucket With Bolt-on Cutting Edge 	Material Handling 	General Purpose Bucket With Bolt-on Cutting Edge 	Bucket With Bolt-on Cutting Edge 	Material Handling 
Capacity	Heaped	yd ³ (m ³)	2.75 (2.1)	3.1 (2.4)	2.75 (2.1)	3.1 (2.4)	3.5 (2.7)	3.1 (2.4)
	Struck	yd ³ (m ³)	2.35 (1.8)	2.6 (2.0)	2.35 (1.8)	2.6 (2.0)	2.9 (2.2)	2.6 (2.0)
Maximum dumping clearance		ft-in (mm)	9'2 ⁵ / ₈ " (2,810)	9'1" (2,770)	10'6 ⁵ / ₈ " (3,215)	9'2 ¹ / ₄ " (2,800)	8'11 ¹ / ₈ " (2,720)	10'6 ¹ / ₈ " (3,205)
Dumping reach (to front of bucket edge or tooth)		ft-in (mm)	2'9" (840)	2'10 ¹ / ₂ " (875)	3'6" (1,065)	3'1 ⁵ / ₈ " (955)	3'4 ³ / ₈ " (1,025)	4' (1,220)
Max. hinge pin height		ft-in (mm)	12'5 ³ / ₄ " (3,805)	12'5 ³ / ₄ " (3,805)	13'8" (4,165)	12'7" (3,835)	12'7" (3,835)	13'9 ³ / ₈ " (4,200)
Digging depth (with bucket level)		ft-in (mm)	1'1 ¹ / ₈ " (30)	1'1 ¹ / ₈ " (30)	5' (125)	3'3 ¹ / ₄ " (95)	3'3 ¹ / ₄ " (95)	11' (280)
Breakout force		lb (kN)	21,800 (97)	20,680 (92)	22,030 (98)	23,600 (105)	21,360 (95)	22,710 (101)
Bucket tilt-back angle	at ground level	degree	42°	42°	44°	43°	43°	44°
	at carry position	degree	50°	50°	50°	50°	50°	50°
Overall	Length	ft-in (mm)	23'4 ⁷ / ₈ " (7,135)	23'7" (7,190)	24'11 ⁵ / ₈ " (7,610)	24'4 ¹ / ₂ " (7,430)	24'8 ⁷ / ₈ " (7,540)	25'11 ³ / ₄ " (7,920)
	Height (to top of cab/ROPS)	ft-in (mm)	10'8 ¹ / ₂ " (3,265)	10'8 ¹ / ₂ " (3,265)	10'8 ¹ / ₂ " (3,265)	10'8 ¹ / ₂ " (3,265)	10'8 ¹ / ₂ " (3,265)	10'8 ¹ / ₂ " (3,265)
	Height (bucket fully raised)	ft-in (mm)	16'5 ¹ / ₄ " (5,010)	16'11 ¹ / ₈ " (5,160)	17'7 ³ / ₈ " (5,370)	17'3 ¹ / ₈ " (5,190)	17'1 ⁷ / ₈ " (5,230)	18'2 ³ / ₄ " (5,555)
	Width (outside tire)	ft-in (mm)	8'1" (2,465)	8'1" (2,465)	8'1" (2,465)	8'1" (2,465)	8'1" (2,465)	8'1" (2,465)
	Width (outside bucket)	ft-in (mm)	8'4 ³ / ₄ " (2,560)	8'4 ³ / ₄ " (2,560)	8'4 ³ / ₄ " (2,560)	8'4 ³ / ₄ " (2,560)	8'4 ³ / ₄ " (2,560)	8'4 ³ / ₄ " (2,560)
Tread		ft-in (mm)	6'4" (1,930)	6'4" (1,930)	6'4" (1,930)	6'4" (1,930)	6'4" (1,930)	6'4" (1,930)
Wheel base		ft-in (mm)	9'10 ¹ / ₈ " (3,000)	9'10 ¹ / ₈ " (3,000)	9'10 ¹ / ₈ " (3,000)	9'10 ¹ / ₈ " (3,000)	9'10 ¹ / ₈ " (3,000)	9'10 ¹ / ₈ " (3,000)
Clearance Circle (bucket carry position)	at outside of bucket	ft-in (mm)	38'8 ⁵ / ₈ " (11,800)	38'9 ³ / ₄ " (11,830)	39'11 ¹ / ₈ " (12,170)	39'1 ¹ / ₂ " (11,900)	39'2 ⁷ / ₈ " (11,960)	40'4 ⁵ / ₈ " (12,310)
	at outside tire	ft-in (mm)	35'1 ⁵ / ₈ " (10,710)	35'1 ⁵ / ₈ " (10,710)	35'1 ⁵ / ₈ " (10,710)	35'1 ⁵ / ₈ " (10,710)	35'1 ⁵ / ₈ " (10,710)	35'1 ⁵ / ₈ " (10,710)
Minimum ground clearance		ft-in (mm)	1'5" (430)	1'5" (430)	1'5" (430)	1'5" (430)	1'5" (430)	1'5" (430)
Full articulation angle		degree	40°	40°	40°	40°	40°	40°
Operating weight (with ROPS cab)		lb (kg)	24,380 (11,060)	24,540 (11,130)	25,070 (11,370)	26,410 (11,980)	26,540 (12,040)	26,920 (12,210)
Static tipping load (with ROPS cab)	Straight	lb (kg)	20,070 (9,105)	19,970 (9,060)	15,810 (7,170)	22,550 (10,230)	22,200 (10,070)	17,860 (8,100)
	Full turn	lb (kg)	17,420 (7,900)	17,310 (7,850)	13,650 (6,190)	19,580 (8,880)	19,250 (8,730)	15,410 (6,990)

The weight and load figure includes counterweight, enclosed ROPS cab, air conditioner, 20.5-25-12PR (L-2) tires, full fuel tank and operator.

The weight and load figure includes counterweight, enclosed ROPS cab, air conditioner, 20.5-25-12PR (L-2) tires, full fuel tank and operator.

Materials and specifications are subject to change without notice and without obligation on the part of the manufacturer. The specifications supplied, while believed to be completely reliable, are not to be taken as warranty for which we assume legal responsibility.

OPTIONAL EQUIPMENT SPECIFICATIONS

60Z7 62Z7 67Z7

60Z7 WEIGHTS AND DIMENSIONS		Operating Weight	Tipping Load			Overall Width (Outside Tire)	Overall Height	Overall Length
			Straight	Full Turn				
Tires: 17.5R25 (Michelin)	lb (kg)	+0 (+0)	+0 (+0)	+0 (+0)	in (mm)	+0 (+0)	+0 (+0)	+0 (+0)
Belly guard (rear frame)	lb (kg)	+90 (+40)	+90 (+40)	+90 (+40)	in (mm)			

60Z7 BUCKET SELECTION CHART	Bucket Size yd ³ (m ³)	Standard Arm																	
	2.0 (1.5)																		
	2.4 (1.8)																		
		Highlift Arm																	
	2.0 (1.5)																		

62Z7 WEIGHTS AND DIMENSIONS		Operating Weight	Tipping Load			Overall Width (Outside Tire)	Overall Height	Overall Length
			Straight	Full Turn				
Tires: 20.5-25-12PR (L-3)	lb (kg)	0 (0)	0 (0)	0 (0)	in (mm)			
17.5-25 (L-2)	lb (kg)	-1,230 (-560)	-440 (-200)	-400 (-180)	in (mm)			
17.5-25 (L-3)	lb (kg)	-1,040 (-470)	-310 (-100)	-260 (-120)	in (mm)			
20.5R25 (L-2)	lb (kg)	+400 (+180)	+290 (+130)	+240 (+110)	in (mm)			
Belly guard (rear frame)	lb (kg)	+150 (+70)	+110 (+50)	+90 (+40)	in (mm)			

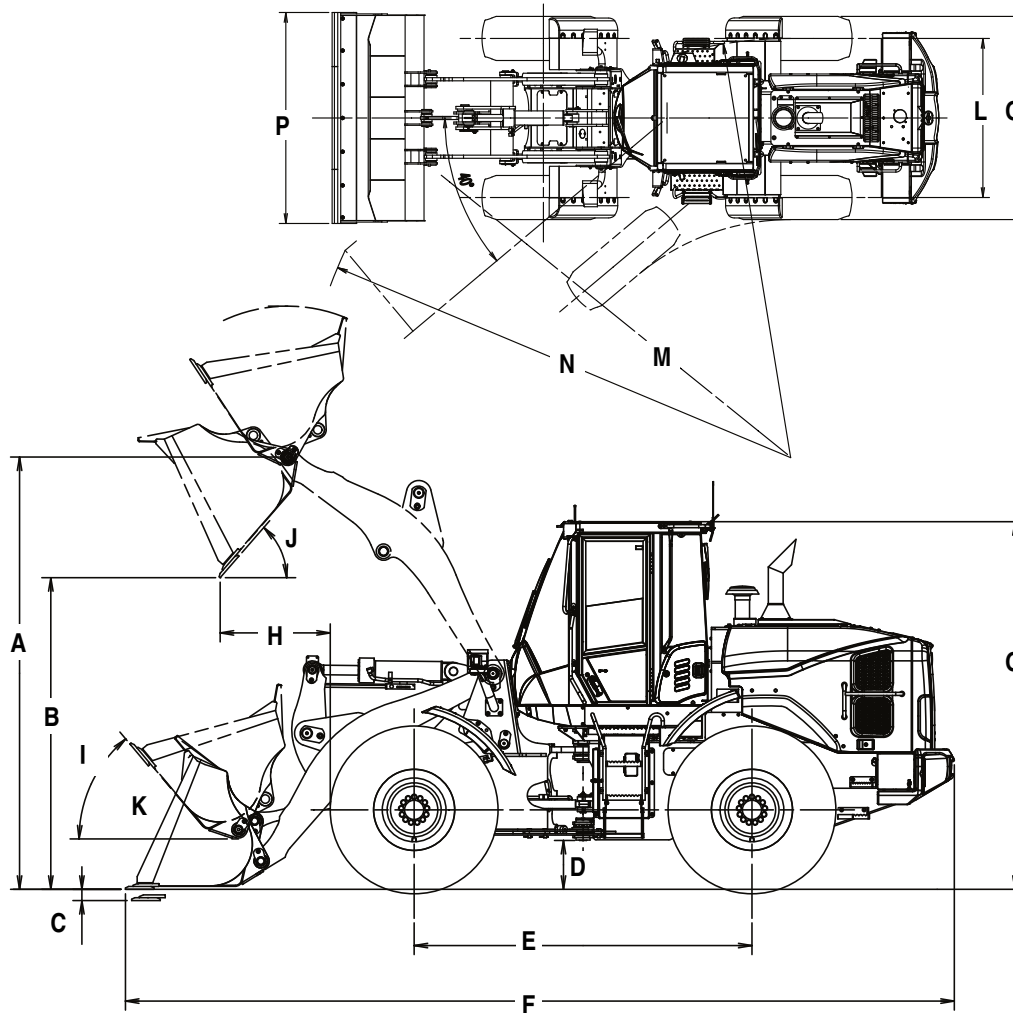
62Z7 BUCKET SELECTION CHART	Bucket Size yd ³ (m ³)	Standard Arm																	
	2.75 (2.1)																		
	3.1 (2.4)																		
		High Lift Arm																	
	2.75 (2.1)																		

67Z7 WEIGHTS AND DIMENSIONS		Operating Weight	Tipping Load			Overall Width (Outside Tire)	Overall Height	Overall Length
			Straight	Full Turn				
Tires: 20.5-25-12PR (L-3)	lb (kg)	0 (0)	0 (0)	0 (0)	in (mm)			
20.5R25 (L-2)	lb (kg)	+400 (+180)	+290 (+130)	+265 (+120)	in (mm)			
Belly guard (rear frame)	lb (kg)	+150 (+70)	+110 (+50)	+90 (+40)	in (mm)			

67Z7 BUCKET SELECTION CHART	Bucket Size yd ³ (m ³)	Standard Arm																	
	3.1 (2.4)																		
	3.5 (2.7)																		
		High Lift Arm																	
	3.1 (2.4)																		

OPERATING SPECIFICATIONS

60Z7 62Z7 67Z7



60Z7 DIMENSIONS

62Z7 DIMENSIONS

67Z7 DIMENSIONS

A Hinge-pin height – standard	11'8"	3,560 mm	12'5 ³ / ₄ "	3,805 mm	12'7"	3,835 mm
Hinge-pin height – high-lift	12'9 ¹ / ₂ "	3,900 mm	13'8"	4,165 mm	13'9 ³ / ₈ "	4,200 mm
B Dumping clearance	8'10 ¹ / ₂ "	2,705 mm	9'2 ⁵ / ₈ "	2,810 mm	9'2 ¹ / ₄ "	2,800 mm
Dumping clearance – high lift	9'11 ⁵ / ₈ "	3,040 mm	10'6 ⁵ / ₈ "	3,215 mm	10'6 ¹ / ₈ "	3,205 mm
C Digging depth	2 ³ / ₄ "	70 mm	1 ¹ / ₈ "	30 mm	3 ³ / ₄ "	95 mm
D Ground clearance with 20.5-25 (See tire option chart for other tires)	1'2 ¹ / ₂ "	370 mm	1'5"	430 mm	1'5"	430 mm
E Wheelbase	8'11 ¹ / ₄ "	2,725 mm	9'10 ¹ / ₈ "	3,000 mm	9'10 ¹ / ₈ "	3,000 mm
F Overall length	21'3 ¹ / ₄ "	6,420 mm	23'4 ⁷ / ₈ "	7,135 mm	24'4 ¹ / ₂ "	7,430 mm
G Height to top of cab/ROPS	10'6 ³ / ₈ "	3,210 mm	10'8 ¹ / ₂ "	3,265 mm	10'8 ¹ / ₂ "	3,265 mm
H Dumping reach – standard	3'3 ³ / ₄ "	1,010 mm	2'9"	840 mm	3'1 ⁵ / ₈ "	955 mm
I Tilt-back @ carry	49°	49°	50°	50°	50°	50°
J Dump angle @ maximum lift	45°	45°	45°	45°	45°	45°
K Tilt-back @ ground	40°	40°	42°	42°	43°	43°
L Tread	5'11 ⁵ / ₈ "	1,820 mm	6'4"	1,930 mm	6'4"	1,930 mm

Clearance Circle—All dimensions are approximate and based on 20.5-25 (L-2) tires.

M Clearance circle to outside of tires	32'3"	9,830 mm	35'1 ⁵ / ₈ "	10,710 mm	35'1 ⁵ / ₈ "	10,710 mm
N Clearance circle to outside of bucket	32'3"	9,830 mm	38'8 ⁵ / ₈ "	11,800 mm	39'1 ¹ / ₂ "	11,900 mm
O Width over tires	32'3"	9,830 mm	8'1"	2,465 mm	8'1"	2,465 mm
P Width to outside bucket	8'1 ¹ / ₂ "	2,450 mm	8'4 ³ / ₄ "	2,560 mm	8'4 ³ / ₄ "	2,560 mm

OPERATING SPECIFICATIONS

60Z7 62Z7 67Z7

ENGINE (EPA Tier 4 Interim/EU Stage IIIB certified)			
	60Z7	62Z7	67Z7
Gross power (SAE J1995)	99 HP/2,000 RPM (74 kW/2000RPM)	154 HP/2,200 RPM (115 kW/2200RPM)	
Net Power (SAE J1349) ISO 9249	95 HP/2,000 RPM (71 kW/2000RPM)	152 HP/2,200 RPM (113 kW/2200RPM)	
Make/Model	DEUTZ TCD36 diesel engine	ISUZU 4HK1 diesel engine	
Type	4-cycle, water-cooled, direct injection with turbocharger and air cooled intercooler		
Fuel type	#2 Diesel (Requires ultra-low sulfur fuel.)		
Fuel injection pump	Electronically controlled, common rail type		
Governor	All speed electrical type		
Cooling module type	Mechanically operated cooling fan, pressurized radiator	Hydraulic-driven, pusher-type fan, pressurized radiator	
Number of cylinders	4		
Bore and stroke	3.858" x 4.724" (98mm x 120mm)	4.53" x 4.92" (115mm x 125mm)	
Total displacement	220.9 in ³ (3.62 liters)	317 in ³ (5.193 liters)	
Alternator	AC24V – 1.92 kW (80 amp)	AC24V – 1.2 kW (50 amp)	
Air cleaner	Dry type (double element)		
Starter motor	DC 24V 4.0 kW (5.4 HP)	DC 24V – 5.0 kW (6.7 HP)	
Battery	12V – 52AH (450 CCA), 2 units	12V – 80AH (662 CCA), 2 units	

TRANSMISSION			
	60Z7	62Z7	67Z7
Type	Electrically controlled 1 motor hydrostatic transmission with gear box	Electrically controlled 2 motor hydrostatic transmission with summation gear box	
Pump	Variable-displacement, load-sensing, bi-directional, axial-piston type		
Motors	Variable-displacement, bent-axis, axial-piston type	2 – Variable-displacement, bent-axis, axial-piston type	
Cooling method	Forced circulation type		
Speeds: Forward	1st: 7.1 MPH (11.5 km/hr) 2nd: 21.4 MPH (34.5 km/hr)	1st: 4.3 MPH (7.0 km/hr) 2nd: 8.0 MPH (13.0 km/hr) 3rd: 12.4 MPH (20.0 km/hr) 4th: 24.2 MPH (39.0 km/hr)	
Speeds: Reverse	1st: 7.1 MPH (11.5 km/hr) 2nd: 21.4 MPH (34.5 km/hr)	1st: 4.3 MPH (7.0 km/hr) 2nd: 8.0 MPH (13.0 km/hr) 3rd: 12.4 MPH (20.0 km/hr) 4th: 24.2 MPH (39.0 km/hr)	

SYSTEMS REFILL CAPACITY			
	60Z7	62Z7	67Z7
LOCATION	GALLONS (LITERS)		
Fuel tank (diesel fuel)	27.7 (150)	54 (205)	
Engine lubricant (including oil pan)	2.9 (11)	4.8 (18)	
Engine coolant	4.2 (16)	6.3 (24)	
T/M gear box	2.1 (8)	2.6 (10)	
Axle (front/rear)	3.7/3.7 (14/14)	6.6/6.6 (25/25)	
Hydraulic oil tank	13.2 (50)	21.1 (80)	
Hydraulic system (including hydraulic tank)	21.1 (80)	39.6 (150)	

HYDRAULIC AND STEERING SYSTEM			
	60Z7	62Z7	67Z7
Steering type	Articulated frame steering		
Steering mechanism	Hydraulic power steering unit, direct operated type		
Lift (boom) cylinder	Two (2) double-acting piston type: 4.134" x 27.953" (105mm x 710mm)	Two (2) double-acting piston type: 4.921" x 24.409" (125mm x 620mm)	Two (2) double-acting piston type: 4.921" x 29.921" (125mm x 760mm)
Tilt (bucket) cylinder	One (1) double-acting piston type: 4.921" x 17.520" (125mm x 445mm)	One (1) double-acting piston type: 5.905" x 17.519" (150mm x 445mm)	One (1) double-acting piston type: 5.905" x 19.291" (150mm x 490mm)
Steering cylinder	Two (2) double-acting piston type: 2.362" x 15.551" (60mm x 395mm)	Two (2) double-acting piston type: 2.559" x 16.496" (65mm x 419mm)	
Main oil pump	Gear type: 32.2 GPM/2988 PSI @ 2000 RPM (122 LPM/20.6MPa @ 2000 RPM)	Gear type: 50.0 GPM/2988 PSI @ 2200 RPM (189.2 LPM/20.6MPa @ 2200 RPM)	
Pilot oil pump	Gear type: 5.8 GPM/1494 PSI @ 2000 RPM (22 LPM/10.3 MPa @ 2000 RPM)	Gear type: 11.6 GPM/2248 PSI @ 2200 RPM (44.0 LPM/15.5 MPa @ 2200 RPM)	
Relief valve set pressure	Load-ing	2,988 psi, 20.6 MPa (210 kg/cm ²)	2,988 psi, 20.6 MPa (210 kg/cm ²)
	Steer-ing	2,495 psi, 17.2 MPa (175 kg/cm ²)	2,843 psi, 19.6 MPa (200 kg/cm ²)

HYDRAULIC CYCLE TIME*			
front end loading, Z bar linkage system		* Measured in accordance with SAE J732C	
	60Z7	62Z7	67Z7
Lifting time (at full load)	6.6 sec.	5.5 sec.	6.7 sec.
Lowering time (empty)	2.7 sec.	3.5 sec.	4.5 sec.
Bucket dumping time	1.5 sec.	1.1 sec.	1.4 sec.
TOTAL	10.8 sec.	10.1 sec.	12.6 sec.

AXLE SYSTEM			
	60Z7	62Z7	67Z7
Drive system	4-wheel drive		
Front and rear axle	Semi-floating type		
Reduction and differential gear	Spiral bevel gear, torque proportioning, single stage reduction	Spiral bevel gear, limited slip, single stage reduction	
Final reduction gear	Inboard mounted, internal planetary gear		
Oscillation angle	±10°		

TIRES		
60Z7	62Z7	67Z7
17.5 x 25-12PR (L-2) (L-3)	20.5-25-12PR (L-2)	
	20.5-25-12PR (L-3)	
17.5R25 (L-2) (L-3)	17.5-25-12PR (L-2) (L-3)	20.5R25 (L-2) (L-3)

BRAKE SYSTEM			
	60Z7	62Z7	67Z7
Service brakes	4-wheel, wet multiple disc brake. Controlled by hydraulic brake booster. Dual circuit.	4-wheel, wet multiple disc brake. Controlled by full hydraulic system. Dual circuit.	
Parking/Emergency brake	Spring-applied, oil pressure-released. Located in transmission.	Spring-applied, oil pressure-released. Located on driveline.	

STANDARD EQUIPMENT**Engine**

Air cleaner, double element
Auto idle shut down*
Cold start (glow plug)
Deutz TCD36 diesel engine†
Cooling fan, automatic reversible
Cooling system cores, wide-fin††
Diesel particulate filter (exhaust filter)*

EGR system
Fuel filter (main), w/water separator
Fuel pre-filter, w/water separator
Isuzu 4HK1 diesel engine*
VGT (Variable Geometry Turbocharger)*
Work mode selector

Powertrain

Brakes, service
Enclosed wet disc
Dual system
Inboard mounted
Brake, parking
Spring applied
Oil pressure released
Wet disc type
Differential, limited slip (F/R)*

Differential, torque proportioning† (F/R)*
Drive shafts, low maintenance
F-R direction selector (2-column mounted/HYD-control lever mounted)*
Hydrostatic transmission
Inching pedal
Maximum speed adjuster for 1st speed
Traction control
Universal joints, sealed*

Hydraulic System

Boom kick-out, dual (operator adjustable in cab)
Bucket positioner
Control lever, single, pilot-assisted
Control lever lock (electric)

Control valve, 2-spool, parallel control
Pump, gear, fixed displacement
Steering, orbitrol

Electrical

24-volt electrical system
Back-up alarm
Batteries (2), 12V, 622 CCA*
Battery disconnect switch
Converter, 12V/15 Amp
Horn, dual electric

Instrument panel, LCD, monochrome
Lights:
2 Headlights (halogen)
2 Forward working lights (halogen)
4 Rear working lights (halogen)
2 Stop/tail/backup (LED)
Turn signal w/4-way flashers/marker

Cab

ROPS cab: Enclosed cab with sound suppression, front & rear wipers and washers, two rear view and side mirrors, tinted glass, full view latch-back doors, sliding side windows.
Accessory outlet, 12V,
Adjustable armrest/console, (fore/aft sliding)
Air conditioner/heater/pressurizer
AM/FM/WB radio with AUX input
Ashtray
Cab dome lamps (2)
Cigarette lighter

Coat hook
Cooler box storage area
Cup holder (2)
Floor mat
Retractable seat belt (3 inch)
ROPS/FOPS certified
Seat, air suspension, fabric
Steering column, telescoping and tilting w/quick-release pedal
Storage box (heated/cooled)
Sun visor

Alarms, Gauges and Indicators

Alarms (visual & audible)
Brake oil low pressure
Engine oil low pressure
Hydraulic oil level*
Overheat (engine coolant)
Steering oil low pressure*

Gauges
Engine coolant temperature
Fuel gauge
HST oil temperature

Indicators
Air cleaner element
Air conditioner display
Battery discharge warning
Cold start
Control lever lock
Diesel particulate filter status*
Eco-operating status
Emergency steering

Engine warning
Fan reverse rotation
F-N-R selection*
F-N-R switch enable*
Fuel filter (plugged filter*)
Fuel filter (water in fuel)
High beam
HST oil temperature
HST warning
Maintenance
Operating mode (Normal, Power)
Parking brake
Ride control
Service
Speedometer
Time/operating hour/ODO
Turn signal w/4-way flashers/marker
Work light

Others

Articulation locking bar
Counterweight
Drawbar
Fenders, front, w/mudflap**
Fenders, rear, deck-type, w mudflap**
KCMA Global e-Service, telematic monitoring system (GSM-version w/4 yrs. service)**

Ladders, inclined
Lifting eyes
Linkage pins, HN bushing
Neutral safety start
Rear grill, steel*
Steps, rear
Vandalism protection*
Z-bar loader linkage

OPTIONAL EQUIPMENT

Belly guard, transmission
Bolt-on cutting edge & segments
Bucket teeth*
Camera, rear view
Dual lever hydraulic control*

Fenders, rear, full, w/mudflap
HID work lights
High lift boom arm
Hydraulic system, 3 spool valve

LED work lights
Pre-cleaner (turbine type)
Quick coupler & attachments
Quick coupler, full cast*

Ride control, automatic
Seat, heated
Secondary steering

* Only on 62Z7 and 67Z7

† Optional on 62Z7

‡ Only on 60Z7

** Optional on 60Z7

ONE FOCUS. COMPLETE SOLUTIONS.

Kawasaki-KCM loaders have a rich heritage of quality, technology and outstanding support. The origins of Kawasaki-KCM loaders can be traced to 1962 when Kawasaki Heavy Industries built their first articulated wheel loader in Japan. As one of the largest heavy industries in Japan, Kawasaki provided a depth of engineering expertise that eventually made their wheel loader a major global player. As they introduced the wheel loader into the North American market in 1978, they found a positive reception for a productive, high quality loader. They established a solid support system built around an extensive, independent network of dealers committed to provide quality support along with quality equipment. This strong dealer network has helped to propel the Kawasaki-KCM loader to a prominent market position in North America.

In 2010 KCM Corporation, using their vast technological resources,

developed the Z7 series of wheel loaders to facilitate the Tier 4 emissions requirement. This effort resulted in the most productive, reliable and cost effective product the company has ever produced, propelling KCM Corporation into a global leadership position in the wheel loader market.

The commitment of KCM Corporation to the North American market is significant. Outstanding parts availability, an unmatched factory component exchange program, customer and dealer training programs, and a wide range of services and programs provide outstanding support for the Kawasaki-KCM wheel loader. With manufacturing facilities in the U.S. and Japan, KCM has the experience and technology to design, engineer, manufacture and service your next wheel



loader. The KCM team is focused on wheel loaders. Flexibility, responsiveness and ease of doing business are foundations of that commitment.

KAWASAKI-KCM WHEEL LOADERS

- 16 Models
- .78–13.5 cu.yd.
- 45 HP–720 HP



KCM
KCMA Corporation

2140 Barrett Park Drive • Suite 101
Kennesaw, Georgia 30144
www.Kawasakiloaders.com
Tel: 770-499-7000
Fax: 770-421-6842