

350x4

SAE Net Horsepower: 268 HP (200 kW)

Operating Weight: 82,400 lbs. (37 400 kg)

Digging Depth: 24 ft 1 in (7.34 m)



Link-Belt
EXCAVATORS



PERFORMANCE, PRODUCTIVITY AND RELIABILITY COME STANDARD

Link-Belt X4 Series excavators are built to exceed your expectations. We redesigned the control spools and incorporated spool stroke control (SSC) functions into the hydraulic system to reduce pressure loss and distribute hydraulic oil more smoothly, decreasing cycle times by up to 10%. Expect more power and fuel efficiency, thanks to an innovative Final Tier 4 engine that delivers up to 5% improved fuel consumption, **without a Diesel Particulate Filter (DPF) to maintain or replace!** Settle in to the roomiest, most accommodating cab in its class, with more legroom and a new high-back, heated seat for shift-long comfort. Daily maintenance is a snap, with ground-level access to all service points, easily opened by hand.



INNOVATION AND ATTENTION TO DETAILS AT EVERY LEVEL



- Three power modes (Speed Priority, Heavy and Applied Power) let you **choose the best blend of power, precision and fuel savings** for the work you're doing



- EPA Final Tier 4 engine is **fuel efficient without sacrificing power**



- **No DPF** to ever worry about!
- 2-3% DEF (Diesel Exhaust Fluid) consumption rate relative to fuel consumption, combined with one of the largest DEF tank capacities lets you work long hours between refills



- Ground level access to routine service points lets you **cut daily maintenance down to just minutes**



- Quiet, pressurized cab offers **excellent visibility and comfortable, best-in-class seating**
- Enough floor space to **accommodate the largest of work boots**, with cup holders and roomy storage compartments for cell phones, snacks and other personal items



- Dual cab working lights are standard, or choose optional LEDs for **added visibility**

- Ergonomic joysticks **fit your hand perfectly**



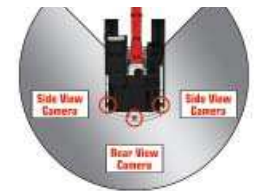
- 7" high-definition LED monitor **keeps you connected to your machine and work environment**



- RemoteCARE® telematics **keeps a watchful eye** on performance, maintenance intervals and theft deterrence



- Full-time, rear-view camera display is standard; add the WAVES™ option for a **seamless 270° view around the machine**



- Structural improvements to the boom and arm **reduce stress and provide greater durability**



- Robust undercarriage features **larger track rollers and thicker plating for longer life**
- Unique side-frame design **reduces dirt accumulation** and is **easier to clean**



*All improvements and percentage increases are in reference to Link-Belt X3 Series excavators, unless otherwise stated

QUICK AND RESPONSIVE TO TAKE ON TOUGH CHALLENGES



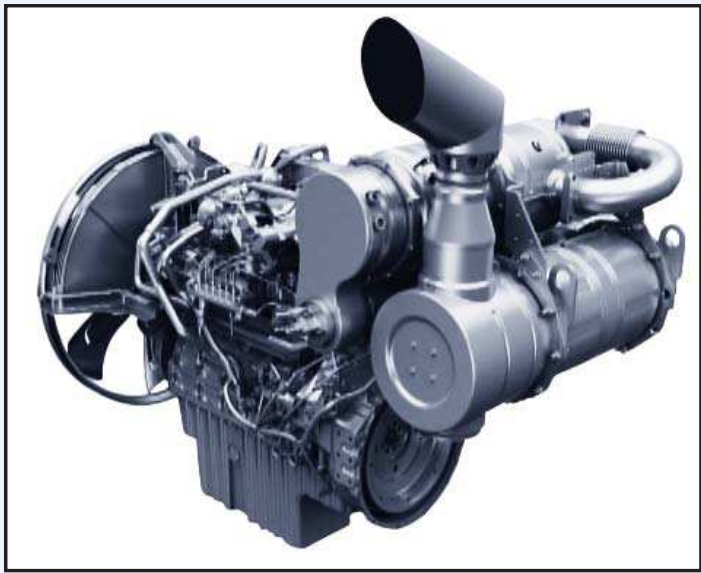
Greater digging power and increased lift capacities are the result of our innovative Spool Stroke Control (SSC) system, which reduces pressure loss and distributes hydraulic oil more smoothly. Pilot pressure sensors detect the type of work being done—such as digging or leveling—and then relays that data to proportional solenoid valves that quickly determine where optimal hydraulic pressures should be directed for that operation.

Two electronically-controlled Kawasaki variable-displacement axial-piston pumps and one Kawasaki gear pump assure that hydraulic power is delivered precisely when and where it's needed. At the same time, hydraulic flows in noncritical areas of the system are reduced.

The result is better breakout force, more lifting strength and faster machine response. You'll dig, swing and dump quicker than ever before... with up to 10% faster cycle times and improved fuel efficiency!

- Proprietary hydraulic system
- New control valve with larger ports; less restriction means improved hydraulic flow for increased performance
- Electronically-controlled pumps for improved cycle times, quicker response and more efficient machine operation
- Move more dirt per gallon of fuel





The X4 Series features innovative EPA-certified Final Tier 4 engines from Isuzu that strike the ultimate balance between power, productivity and fuel efficiency. You'll experience up to 5% improved fuel efficiency, without having to worry about costly diesel particulate filters (DPF) to maintain or replace. Three engine modes provide reliable power and control for any machine application. Choose Speed Priority (SP mode) to get jobs done quickly, Heavy (H mode) for the best blend of power and fuel savings or Applied Power (A mode), with 13 different RPM settings for precise control of heavy lifting, fine grading or leveling work.

- EPA-certified Tier 4 Final
- No DPF to maintain
- Up to 5% improved fuel economy
- 500-hr. fuel filters service intervals
- 10 diesel tank refills per 1 diesel exhaust fluid (DEF) refill
- 2-3% DEF consumption rate
- Two-stage DEF anti-freeze system for protection in harsh operating conditions
- 30 hrs. between SCR regenerations, only takes 5-8 minutes to complete!
- VGT (Variable Geometry Turbocharger)





POWER AND EFFICIENCY WITHOUT COMPROMISE



The X4 Series offers one of the most advanced and roomiest cabs in its class. Comfortable, automotive-grade high-back seat with head rest provides superior lumbar back support. With a longer and wider seating surface, it reclines to a 155° maximum reclining angle to create a relaxed environment during breaks. Mechanical suspension is standard, with air suspension, seat tilting adjustment and seat heaters available as options.

The cab layout also includes ergonomically-designed arm rests that move with console, maintaining a constant distance between joysticks and arm rests no matter how the seat is adjusted.

- Quiet, pressurized cab
- Joysticks with easy-to-hold grip and switches
- Handy 'radio mute' and one touch wiper switch
- Optional proportional joysticks w/ auxiliary hydraulics control
- Cup holder and storage areas for cell phones and other small items
- Dual halogen cab lights standard
- Full time rear camera display
- Optional RH & LH side cameras
- ROPS and FOPS Level 1 certified, optional FOPS Level 2 head guard available
- Optional LED lights use less energy and are 3X brighter!
- Optional retractable rear window shade
- Optional front sun visor
- Improved radio with USB port and Bluetooth for hands-free communication.



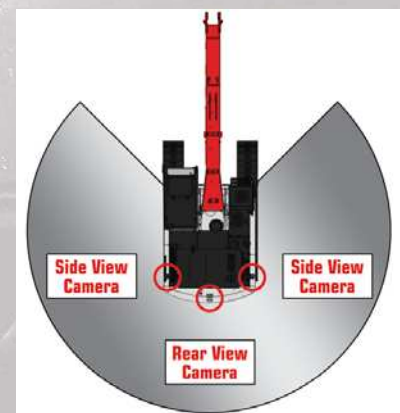


High-Definition LED monitor has a full-color 7" display that rivals the resolution found in luxury automobiles. Controls are easy to read and easy to use. The rear-view camera activates automatically whenever the machine is started, and sight guidelines have been added for increased safety.

- Anti-glare coating on screen
- Track up to 14 service maintenance reminders
- System/machine warning messages
- Monitor SCR auto regeneration
- Select and set up attachments: 5 presets for breakers; 5 presets for crushers
- In-cab flow and pressure controls for auxiliary hydraulics
- Anti-theft system
- Auto-adjusts for time and calendar
- 24 languages available
- Ability to view fuel consumption

270°
WAVESTM
WIDE-ANGLE VISUAL ENHANCEMENT SYSTEM

For the ultimate in visibility, X4 machines can be fitted with the Wide Angle Visual Enhancement System - or WAVES for short. Using three closed-circuit cameras, this optional viewing system provides an unbelievable 270° visual coverage around the machine, eliminating any potential blind spots from the operator's line of sight. WAVES images can be displayed on the standard X4 monitor.





Maintenance is a snap, with ground level access to all routine service points, including batteries, fuel filters, engine oil filter, dual-element air filter and cab fresh air filter.

- Radiator screens are easy to remove and clean from ground level...no tools needed!
- A/C Condenser tilts for easy cleaning and maintenance
- Easy battery compartment access; 2 hand-turn knobs
- Improved battery disconnect switch with no keys needed
- Convenient ground-level sample ports in pump compartment
- Green drain plug and hose
- More data collection points
- Automatic door locking mechanism on side door
- Quick and easy access to grease all attachment pivot points
- Grease cylinder track adjusters make adjusting track tension a breeze
- New undercarriage side frame design enables easier cleaning
- In-cab reminders track 14 different maintenance procedures



GET WORKING FAST WITH EASY ACCESS TO SERVICE POINTS



RemoteCARE® lets you remotely monitor and track machine location, operational performance, working status and periodic maintenance requirements. It tracks and records both routine and major service intervals for your machines, giving you more flexibility and control when scheduling maintenance procedures. It also lets you be more proactive if potential failure conditions arise; whenever a diagnostic trouble code (DTC) is detected, a warning message appears on the machine display, and an e mail alert is automatically sent to you. RemoteCARE also assists in theft prevention by offering 24/7 surveillance and geofencing capabilities.

- 24/7 Remote Monitoring and Security
- Machine Location
- Geo-fence & Curfew Range
- Actual Fuel Consumption
- Fuel Levels
- Hour Meter Reading
- Radiator Water Temperature
- Machine Working Time/Idle Time
- Attachment Working Hours
- Working Modes
- Service Maintenance Reminders
- Service Warnings
- 6-yr. complimentary subscription

BUILT STRONG TO HANDLE ANYTHING

X4 machines are more rugged and durable, with robust structural improvements to the boom & arm structures, along with improvements to lower frame and travel components.



Boom & Arm

- Improved boss shapes reduce stress on boom and arm pin
- Cast boom tip for increased reliability



Lowers

- Thicker travel motor case - 28% increase
- 14% more stroke recoil spring
- 50% longer idler shoulder and hub
- Unique side-frame design reduces dirt accumulation and is easier to clean.



CUSTOMER SUPPORT IS JUST A CALL AWAY

A network of Link-Belt Excavator dealers across the U.S. and Canada is waiting to serve you. Expect fast and dependable service, backed by 24/7 access to parts.

Rock-Solid Warranty Coverage

All X4 machines are backed by a 1-year/1,800 hour Full Machine Warranty, 2-year/3,000 hour Engine Warranty (2,000 hrs. electrical parts), 3-year/5,000 hour Powertrain Warranty, 3-year/10,000 hour XtraStructure Warranty, 5-year/3,000 hour EPA Emissions Warranty and participation in the X4 Fluids Analysis Program for the life of the warranty. Extended warranty coverage packages are also available.



SPECIFICATIONS



Engine

Isuzu AQ-6HK1X Final Tier 4 turbocharged diesel engine with electronic control (ECM) and high pressure common-rail fuel injection, 6-cylinder, water-cooled, Cooled Exhaust Gas Recirculation (CEGR), Intercooler, Variable-Geometry Turbocharger (VGT), Diesel Oxidation Catalyst (DOC) and Selective Catalytic Reduction (SCR) system with Dosing Control Module and heated DEF lines and tank. Electronic fuel pump and priming, Fuel cooler, Auto-idle start, Auto warm-up, EPF engine protection, dual-stage fuel filtration, remote oil filter, engine oil sample port, green plug oil drain, double element air filter.

SAE J 1349 net horsepower.....	268 hp (200 kW) @ 1,900 rpm
Displacement.....	475 cu in (7.8 L)
Maximum Torque.....	729 lbf-ft (988 Nm) @ 1,500 rpm
Starter.....	24V-5.0kW
Alternator.....	50 amp
Battery.....	(2) 12-volt 128 amp hours



Cab and Controls

ROPS and FOPS Level 1 certified with automatic climate control A/C and heat with defroster, 7" LED Hi-Definition color monitor with full time rear view camera display, fuel efficiency gauge, low-effort joysticks are pre-wired for auxiliary hydraulics, dual cab lights, control pattern changer, safety glass windows, sunroof with sunshade, shockless cab suspension with four fluid cab mounts, SCM High-Back reclining suspension seat, sliding 4-position tilting control consoles, AM/FM sound system with MP3 auxiliary input jack, digital clock, dome light, seat belt, coat hook, cup holder, storage compartments, floor mat, footrests, ashtray, 24V cigarette lighter, 12V outlet, travel alarm, handrails, mirrors, side-entry cab filter, spare parts kit.

Three selectable work modes, RemoteCARE Telematics GPS system, anti-theft password protection system, onboard self-diagnostic system with memory and service interval reminders, auto idling system, one-touch decelerator, auto-idle engine shutdown, auto-power boost, neutral safety start, gate-lock safety shutoff.



Hydraulic System

Open-center system, two variable-displacement electronically controlled axial-piston pumps and one gear pump for pilot controls, main control valve with one 4-spool section and one 5-spool section with auxiliary spool: stackable, Auxiliary Control System, oil cooler, Auto-Power boost, boom and arm holding valves, 6 micron return filter, firewall, hydraulic oil sample port.

Hydraulic Pumps

Pump Output.....	2 x 79.3 gpm (300 L/min)
Pilot Pump Maximum Flow.....	7.5 gpm (28.5 L/min)

Relief Valve Settings

Boom/Arm/Bucket.....	4,970 psi (34.3 MPa)
in Power Boost.....	5,410 psi (37.3 MPa)
Swing Circuit.....	4,410 psi (30.4 MPa)
Travel Circuit.....	4,970 psi (34.3 MPa)

Hydraulic Cylinders

	number of cylinders - bore x rod x stroke
Boom.....	2 - 5.7" x 3.9" x 58.9" (145 mm x 100 mm x 1,495 mm)
Arm.....	1 - 6.7" x 4.7" x 68.8" (170 mm x 120 mm x 1,748 mm)
Bucket.....	5.9" x 4.1" x 47.6" (150 mm x 105 mm x 1,210 mm)



Swing

Planetary reduction powered by axial-piston motor, Internal ring gear with grease cavity for swing pinion, Swing bearing is single-row, shear type ball bearing, Mechanical disc swing brake, Auto-power swing.

Swing Speed.....	9.7 rpm
Tail Swing.....	11' 8" (3.55 m)
Swing Torque.....	82,600 lbf-ft (112 kNm)

Undercarriage

X Pattern carbody with 16' 4" (4.98 m) LC long undercarriage by 8' 6" (2.60 m) track gauge, Sealed and strutted track chain with track guide, Sealed rollers and idlers, Two-speed independent hydrostatic travel with compact planetary final drive, Disc type brakes, Adjustable track tension, Carbody belly pan.

Carrier Rollers.....	2 per Side
Track Rollers.....	8 per Side
Track Link Pitch.....	8.5" (216 mm)
Shoes.....	48 per Side
Shoe Width.....	31.5" (800 mm)
Ground Pressure.....	7.69 psi (0.053 MPa)



Travel System

Two-speed independent hydrostatic travel with compact axial-piston motors, Hydraulic motor powered output shaft coupled to a planetary reduction drive and track sprocket, All hydraulic components mounted within the width of side frame, Automatic downshift for high torque to overcome obstacles, Spring-applied hydraulic release parking brake built into each motor, Travel motors equipped with counterbalance valve to prevent over-speeding down an incline, Single-pedal straight line travel.

Travel Speeds.....	2.1 - 3.5 mph (3.4 - 5.6 km/h)
Drawbar Pull.....	58,200 lbf (259 kN)
Gradeability.....	70% (35°)



Attachment

Boom.....	21' 2" (6.45 m)
-----------	-----------------

Available Arms

Available Arms	Digging Force
• 10' 8" (3.25 m).....	36,980 lbf (165 kN)
with Auto Power Boost.....	40,200 lbf (179 kN)
• 8' 8" (2.63 m).....	43,770 lbf (195 kN)
with Auto Power Boost.....	47,590 lbf (212 kN)
• 13' 3" (4.04 m).....	31,470 lbf (140 kN)
with Auto Power Boost.....	34,220 lbf (152 kN)
• Bucket Digging Force.....	51,640 lbf (230 kN)
with Auto Power Boost.....	56,160 lbf (250 kN)



Lubricant & Coolant Capacity

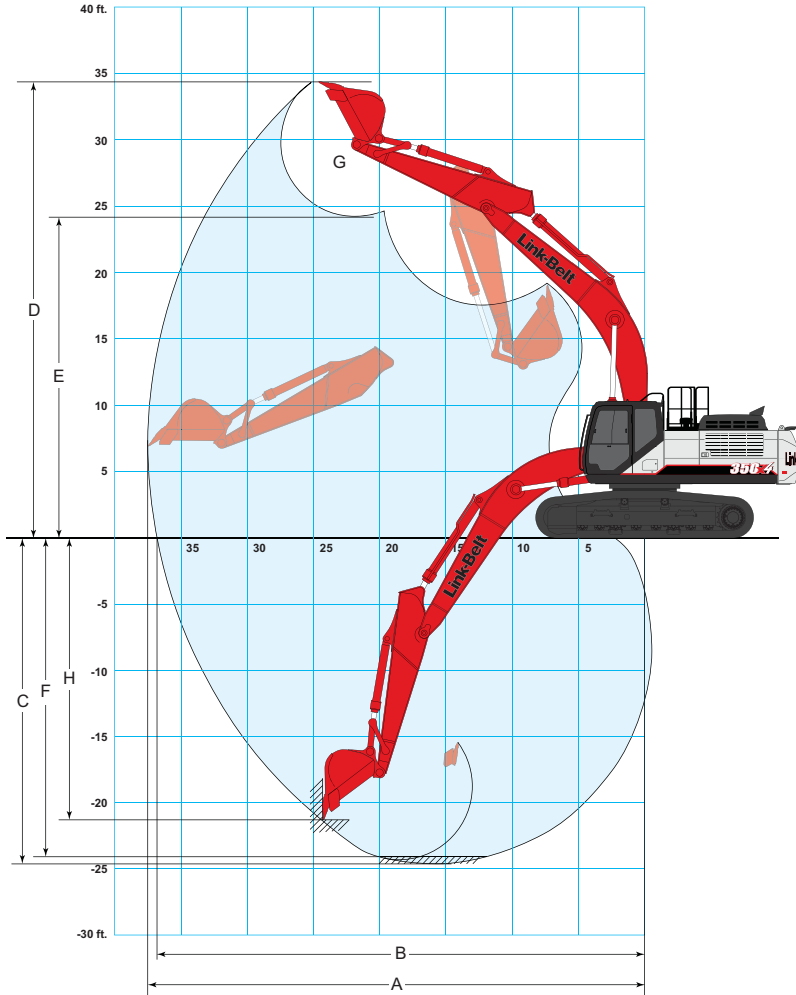
Fuel Tank.....	153 Gallons (580.0 Liters)
Hydraulic System.....	92 Gallons (350.0 Liters)
Hydraulic Tank.....	46 Gallons (175.0 Liters)
Final Drive (per side).....	2.5 Gallons (9.5 Liters)
Swing Drive.....	1.3 Gallons (5.0 Liters)
Engine Oil.....	12.7 Gallons (48.0 Liters)
DEF Tank.....	40 Gallons (152.0 Liters)
Coolant System.....	10.0 Gallons (38.0 Liters)



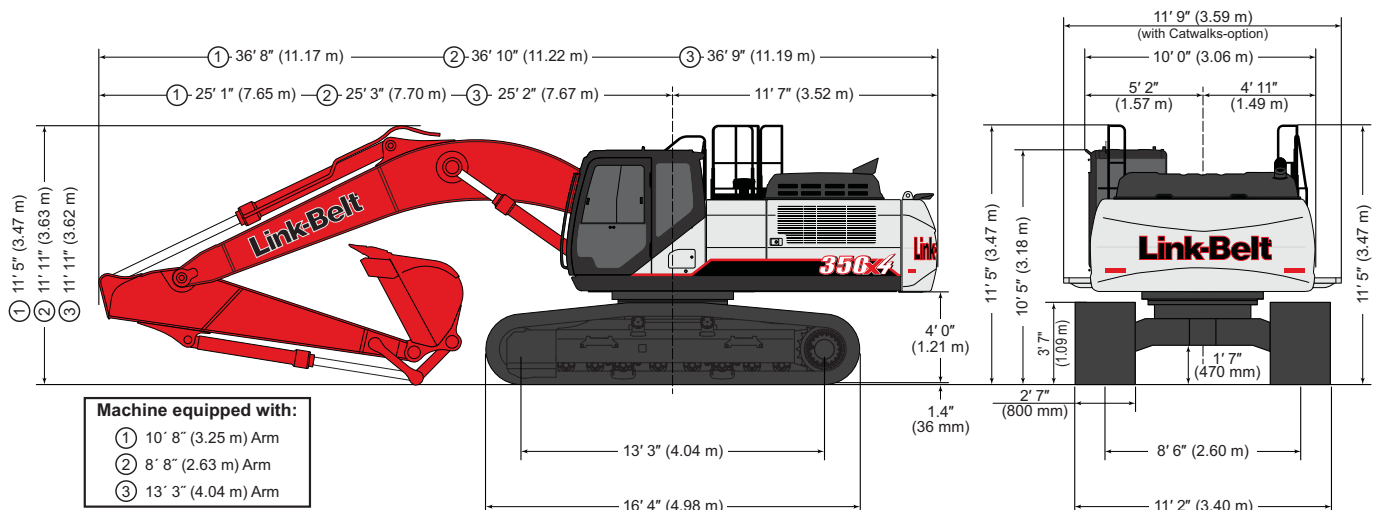
Operating Weight

Working weight with 31.5" (800 mm) shoes, 21' 2" (6.45 m) boom, 10' 8" (3.25 m) arm, 2,601 lb. (1 180 kg) bucket, 16,300 lb. (7 400 kg) counterweight.....	82,400 lbs. (37 400 kg)
--	-------------------------

WORKING RANGE & TRAVEL DIMENSIONS



Machine Equipped with 21' 2" (6.45 m) Boom	Arm 10' 8" (3.25 m)	Arm 8' 8" (2.63 m)	Arm 13' 3" (4.04 m)
A. Maximum reach	36' 8" (11.17 m)	34' 11" (10.65 m)	39' 0" (11.90 m)
B. Maximum reach @ ground level	36' 0" (10.98 m)	34' 3" (10.45 m)	38' 5" (11.71 m)
C. Maximum dig depth	24' 1" (7.34 m)	22' 1" (6.72 m)	26' 9" (8.14 m)
D. Maximum dig height	34' 1" (10.38 m)	33' 9" (10.28 m)	34' 11" (10.65 m)
E. Maximum dump height	23' 9" (7.24 m)	23' 4" (7.11 m)	24' 8" (7.53 m)
F. Digging depth 8' (2.44 m) level bottom	23' 7" (7.19 m)	21' 6" (6.54 m)	26' 3" (8.01 m)
G. Bucket rotation	173°	173°	173°
H. Maximum vertical wall depth	20' 10" (6.34 m)	19' 7" (5.98 m)	23' 0" (7.01 m)



STANDARD & OPTIONAL EQUIPMENT

CAB	Wiper & Washer.....S	HYDRAULICS	Long Undercarriage.....S
12V Power Outlet.....S	Wiper Switch on RH Joystick.....S	Arm Regeneration.....S	Sealed Link Chain.....S
270° WAVES™ Camera System.....O	ENGINE	Arm Speed Assistance (2 Pump Flow)....S	Steps.....S
AM/FM Sound System.....S	50A Alternator.....S	Attachment Cushion Valve.....S	Strutted Track Chain.....S
Anti-Theft Device.....S	90A Alternator.....O	Auto Swing Priority.....S	X-Pattern Carbody.....S
Auxiliary Switches on Control Lever.....S	Air Filter (Double Element).....S	Auxiliary Flow Control.....S	UPPERSTRUCTURE
Cab Filter - External.....S	Air Filter Restriction Indicator.....S	Auxiliary Tool Settings (Memory).....S	Belly Pans.....S
Cab Handrails.....S	Air Pre-Cleaner (Cyclone type).....S	Auxiliary Valve.....S	Center Cover (Over Main CV).....S
Cab Interior Light.....S	Auto Warm-Up System.....S	Boom Regeneration.....S	Fuel Tank Belly Pan.....S
Cab ISO-Mounts.....S	Auto-Idle.....S	Boom Speed Assistance (2 Pump Flow)....S	Hand Rail (RH access).....S
Cab Light (2 LED).....O	Auto-Idle Engine Shutdown.....S	Bucket Curl Assist.....S	ISO Guard Rails.....S
Cab Light (2).....S	Battery Disconnect Switch.....S	Control Levers Pre-Wired for Auxiliary Hyd...S	Lifting Eyes for Counterweight.....S
Cab Sun Screen (rear).....O	CEGR (Cooled Exhaust Gas Recirculation)....S	Control Pattern Changer (2 way).....S	Lockable Fuel Cap and Service Doors.....S
Clear Roof Window.....S	Cooling Fan.....S	Electronically Controlled Hydraulic Pumps...S	Lockable Tool Box.....S
Climate Control A/C and Heater.....S	Diesel Oxidation Catalyst (DOC).....S	Fire Wall.....S	Rubber Bumper Guards.....O
Cup Holder.....S	Drain for Fuel Tank.....S	Free Swing.....S	Turntable Tub.....S
Defroster.....S	Dual Remote Fuel Filters with Water Separators.....S	Holding Valve (Arm & Boom).....S	Work Lights (Boom and Tool Box).....S
Digital Clock.....S	EGR Coolers.....S	Hose Burst Check Valve.....O	ATTACHMENT
Emergency Exit and Hammer.....S	Emergency Engine Stop.....S	Hydraulic Filter Restriction Indicator.....S	8' 8" (2.63 m) Short Arm.....O
Face Vent.....S	Engine Idle System.....S	Hydraulic Oil Sample Port.....S	10' 8" (3.25 m) Arm.....O
Floor Mat.....S	Engine Oil Sample Port.....S	Long Life Hydraulic Oil (5,000 Hour).....S	13' 3" (4.04 m) Arm.....O
FOPS Head Guard (Level 2).....O	Engine Protection Feature.....S	Neutral Pump De-Stroke.....S	13' 3" (4.04 m) Arm.....O
FOPS Level 1 Certified.....S	External Fuel Gauge.....S	Oil Cooler.....S	21' 2" (6.45 m) Main Boom Section...S
Front Guard (Mesh).....O	External DEF Gauge.....S	Power Boost.....S	Auxiliary Pipe Brackets.....S
Front Guard (DPG 1,2).....O	Fan Housing.....S	Pressure Reading on Monitor.....S	Boom Work Light.....S
Front Window One-Touch Lock.....S	Fuel Cooler.....S	Proportional Hydraulic Controls.....O	Bucket Anti-Clatter Device.....S
Gate Lock Hydraulic Activation.....S	Fuel Filter Restriction Indicator.....S	Pump Stand-By Pressure.....S	Chrome Pins.....S
Horn.....S	Fuel Management System.....S	Single Pedal Travel.....S	Easy Maintenance System (EMS).....S
Hour Meter (Digital).....S	Fuel Shut-Off Valve.....S	Straight Travel Circuit.....S	HD Bucket Linkage.....S
LED Color Monitor.....S	Fuel Usage History.....S	AUXILIARY HYDRAULIC OPTIONS	Quick Couplers.....O
LED Light Kit for Side Camera (1).....O	Fuel Usage Monitor.....S	Single-Acting Aux. w/ Pedal Activation.....O	Remote Lube Bank.....S
LED Lights for Rear Camera (2).....O	Glow Plug Pre-Heat.....S	Single-Acting Aux. w/ Proportional Joysticks...O	Teardrop Pin Retention Keepers.....S
Magazine Storage Rack.....S	Idle-Start.....S	Multi-Function Aux. w/ Proportional Joysticks...O	Thumbs.....O
Maintenance Interval Reminders.....S	Intercooler.....S	Multi-Function Aux. w/ in-cab pressure setting control.....O	PARTS KIT
MP3 Auxiliary Input Jack.....S	Neutral Start.....S	Thumb Aux. w/ Proportional Joysticks...O	Bucket Anti-Clatter Device.....S
On-Board Diagnostic System.....S	One-Touch Idle.....S	Secondary Aux. w/ Proportional Joysticks...O	Engine Manual.....S
One-Piece Right Window.....S	Passive Emissions Regeneration.....S	Combination Aux. w/ Proportional Joysticks...O	Engine Oil Filter.....S
Radio Mute Switch.....S	Radiator / Oil Cooler / Intercooler Protective Screen.....S	Combination Aux. w/ in-cab pressure setting control.....O	Filter Wrench.....S
Rain Deflector.....O	Refuel Pump.....O	Bucket Quick Coupler Hydraulics Line...O	Fuel Filters.....S
Rear View Camera.....S	Remote Engine Oil Drain.....S	UNDERCARRIAGE	Grease Gun.....S
Rear View Mirrors (2).....S	Remote Oil Filter.....S	600 mm (23.5" in) 3-Bar Steel Grousers...O	Green Plug Drain Hose for Engine Oil Drain...S
RemoteCARE Support System (GPS).....S	Selective Catalytic Reduction (SCR).....S	700 mm (27.5" in) 3-Bar Steel Grousers...O	Hydraulic Return Filter.....S
Roof Sun Shade.....S	Topical Package.....O	800 mm (31.5" in) 3-Bar Steel Grousers...S	Ignition Keys.....S
ROPS Certified Structure.....S	DEF Gauge on Monitor.....S	Carbody Belly Pan (Swivel Guarding).....S	Pilot Circuit Hydraulic Filter.....S
Safety Glass Windows.....S	VGT Turbocharger.....S	Center Track Guide (single).....S	Rearview Mirrors.....S
SCM Air-Suspension Seat with Tilt & Heater...O		Center Track Guide (triple).....O	Work Light for Boom.....S
SCM Suspension Seat.....S		Lashing Points (Tie-Downs).....S	
Seat Recline.....S			
Selectable Monitor Languages.....S			
Small Storage.....S			
Travel Alarm with Cancel Switch.....S			
Trip Meter (Digital).....S			

Equipment Key
Standard - S Optional - O

Bucket Sizes

Bucket Type	SAE Heaped Capacity		Width Outside Lip		Bucket Weight		Number of Teeth	Arm Length		
	(yd³)	(m³)	(in)	(mm)	(lbs)	(kg)		8' 8" 2.63 m	10' 8" 3.25 m	13' 3" 4.04 m
STDP Standard duty plate	1.26	0.96	30	762	2306	1046	4	H	H	H
	1.59	1.22	36	914	2516	1141	4	H	H	H
	1.92	1.47	42	1067	2786	1264	5	H	H	H
	2.25	1.72	48	1219	2956	1341	5	H	H	M
	2.59	1.98	54	1372	3226	1463	6	M	M	L
2.93	2.24	60	1524	3396	1540	6	M	L	L	
HDP Heavy duty plate	1.22	0.93	30	762	2886	1309	4	H	H	H
	1.54	1.18	36	914	3131	1420	4	H	H	H
	1.86	1.42	42	1067	3459	1569	5	H	H	H
	2.19	1.67	48	1219	3704	1680	5	H	H	M
	2.53	1.93	54	1372	4031	1828	6	M	M	L
XDP Extreme duty plate	1.22	0.93	30	762	3327	1509	4	H	H	H
	1.54	1.18	36	914	3620	1642	4	H	H	H
	1.86	1.42	42	1067	3994	1812	5	H	H	M
	2.48	1.90	48	1219	4287	1945	5	M	M	L
POWER HDP for use with ESCO multi-pin grabber only	1.08	0.83	30	762	3461	1570	4	H	H	H
	1.35	1.03	36	914	3688	1673	4	H	H	H
	1.62	1.24	42	1067	3860	1751	5	H	H	H
	1.90	1.45	48	1219	4030	1828	5	H	H	M
	2.18	1.67	54	1372	4257	1931	6	H	M	L
2.20	1.68	72	1829	2971	1348	0	H	H	M	

Approval Code For Arm/Bucket Combinations	
H.....	Heavy material (up to 3,370 lbs./yd³)
M.....	Medium material (up to 2,700 lbs./yd³)
L.....	Light material (up to 2,020 lbs./yd³)
N/A.....	Not applicable

Litho in USA 4/16 #LBX2304 supersedes #LBX2285

LBX® and Link-Belt® are registered trademarks. Copyright 2016. All rights reserved. We are constantly improving our products and therefore reserve the right to change designs and specifications.

Courtesy of Machine.Market