



888 Wheel Loader



Engine	Cummins
Gross Power	235 kW (315 hp) @ 2,100 rpm
Net Power	212 kW (284 hp) @ 2,100 rpm
Operating Weight	30,000 kg
Standard Bucket Size	4.5 m ³
Standard Breakout Force	260 kN
Standard Dump Clearance	3,330 mm

888

Wheel Loader



ENGINE

Emission Regulation	Tier 2 / Stage II
Make	Cummins
Gross Power	235 kW (315 hp) @ 2,100 rpm
Net Power	212 kW (284 hp) @ 2,100 rpm
Peak Torque	1,600 N·m @ 1,400 rpm
Displacement	10.8 L
Number of Cylinders	6
Aspiration	turbo air - to - air aftercooled

TRANSMISSION

Transmission Type	countershaft power shift
Torque Converter	single-stage, three-element
Maximum Travel Speed, fwd	35 km/h
Maximum Travel Speed, rev	24.5 km/h
Number of Speeds, fwd	4
Number of Speeds, rev	3

AXLES

Differential Front Type	conventional
Differential Rear Type	conventional

Axle Oscillation	±13°
------------------	------

STEERING

Steering Configuration	articulated
Steering Relief Pressure	20 MPa

BRAKES

Service Brake Type	wet multi disc
Service Brake Actuation	hydraulic
Parking Brake Type	auto and manual electronic controlled
Parking Brake Actuation	spring apply; hydraulic release

HYDRAULIC SYSTEM

Main Pump Type	gear
Main Relief Pressure	20.7 MPa
Raise	6.9 s
Dump Time	1.59 s
Float Down Time	3.3 s
Fastest Total Cycle Time	11.79 s

LOADER ARM PERFORMANCE

Tipping Load - Straight	25,755 kg
Tipping Load - Full Turn	21,960 kg
Bucket Breakout Force	260 kN
Maximum Dump Angle at Full Height	45°
Dump Clearance at Full Height Discharge	3,330 mm
Dump Reach at Full Height Discharge	1,460 mm
Maximum Hinge Pin Height	4,490 mm
Maximum Digging Depth, Bucket Level	118 mm
Bucket Rollback at Ground Level	45°
Bucket Rollback at Carry	49°
Bucket Rollback at Maximum Height	63°

BUCKET PERFORMANCE

Reference Bucket	4.5 m ³
------------------	--------------------

DIMENSIONS

Length with Bucket Down	9,270 mm
Width Over Tires	3,170 mm
Wheelbase	3,530 mm
Wheel Tread	2,420 mm
Ground Clearance	476 mm
Turn Angle, Either Side	38°
Rear Angle of Departure	24.5°
Turning Radius, Outside of Tire	6,760 mm
Turning Radius, Center of Tire	6,335 mm
Turning Radius, Bucket Carry	7,570 mm

TIRES

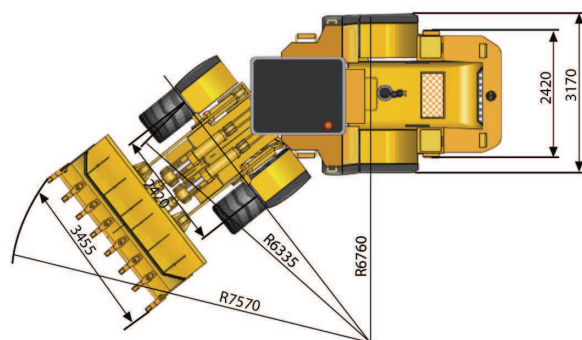
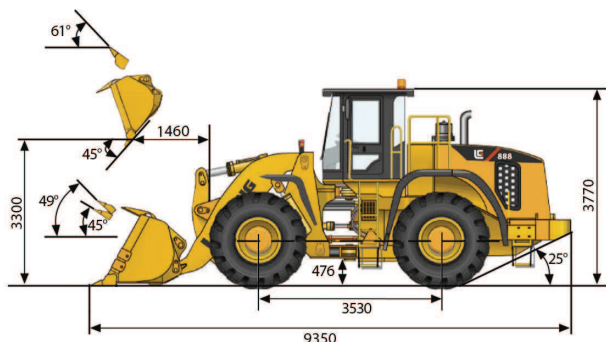
Tire Size	29.5 - 25
-----------	-----------

OPERATING WEIGHTS

Operating Weight	30,000 kg
------------------	-----------

SERVICE CAPACITIES

Fuel Tank	445 L
Engine Oil	33 L
Cooling System	41 L
Hydraulic Reservoir	250 L
Transmission and Torque Converter	70 L
Front Axle	65 L
Rear Axle	65 L



Unit: mm

Guangxi Liugong Machinery Co., Ltd.

No. 1 Liutai Road, Liuzhou, Guangxi 545007, PR China

T: +86 772 388 6124 E: overseas@liugong.com

www.liugong.com

09/2012 Designed by LiuGong

Specifications and designs are subject to change without notice. Machines shown may include optional equipment.

Courtesy of Machine.Market