



877 III Wheel Loader



Engine	Cummins
Gross Power	216 kW (290 hp) @ 2,100 rpm
Net Power	205 kW (275 hp) @ 2,100 rpm
Operating Weight	24,500 kg
Standard Bucket Size	4.2 m ³
Standard Breakout Force	218 kN
Standard Dump Clearance	3,200 mm

877 III Wheel Loader



ENGINE

Emission Regulation	Tier 3 / Stage IIIA
Make	Cummins
Gross Power	216 kW (290 hp) @ 2,100 rpm
Net Power	205 kW (275 hp) @ 2,100 rpm
Peak Torque	1,478 N·m @ 1,400 rpm
Displacement	10.8 L
Number of Cylinders	6
Aspiration	turbo air-to-air aftercooled

TRANSMISSION

Transmission Type	countershaft power shift
Torque Converter	single-stage, three-element
Maximum Travel Speed, fwd	36.5 km/h
Maximum Travel Speed, rev	27.0 km/h
Number of Speeds, fwd	4
Number of Speeds, rev	3

AXLES

Differential Front Type	limited slip
Differential Rear Type	limited slip
Axle Oscillation	±12°

STEERING

Steering Configuration	articulated
Steering Relief Pressure	19 MPa

BRAKES

Service Brake Type	wet multi disc
Service Brake Actuation	hydraulic
Parking Brake Type	auto and manual electronic controlled
Parking Brake Actuation	spring apply; hydraulic release

HYDRAULIC SYSTEM

Main Pump Type	vane
Main Relief Pressure	20.7 MPa
Raise	6.45 s
Dump Time	1.31 s
Float Down Time	3.66 s
Fastest Total Cycle Time	11.42 s

LOADER ARM PERFORMANCE

Tipping Load - Straight	19,260 kg
Tipping Load- Full Turn	16,820 kg
Bucket Breakout Force	218 kN
Maximum Dump Angle at Full Height	45°
Dump Clearance at Full Height Discharge	3,200 mm
Dump Reach at Full Height Discharge	1,300 mm
Maximum Hinge Pin Height	4,369 mm
Maximum Digging Depth, Bucket Level	133 mm
Bucket Rollback at Ground Level	46°
Bucket Rollback at Carry	50°
Bucket Rollback at Maximum Height	60.6°

BUCKET PERFORMANCE

Reference Bucket	4.2 m ³
------------------	--------------------

DIMENSIONS

Length with Bucket Down	9,113 mm
Width Over Tires	2,966 mm
Wheelbase	3,450 mm
Wheel Tread	2,270 mm
Ground Clearance	458 mm
Turn Angle, Either Side	38°
Rear Angle of Departure	28°
Turning Radius, Outside of Tire	6,493 mm
Turning Radius, Center of Tire	6,145 mm
Turning Radius, Bucket Carry	7,260 mm

TIRES

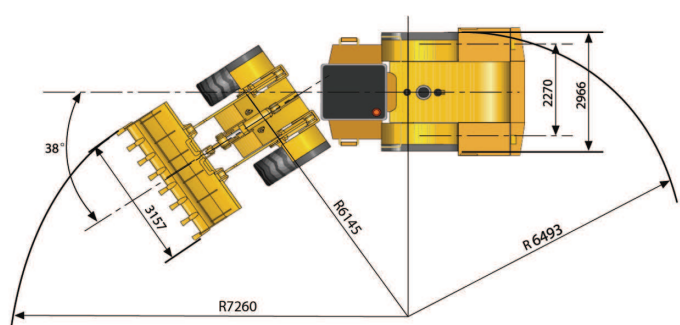
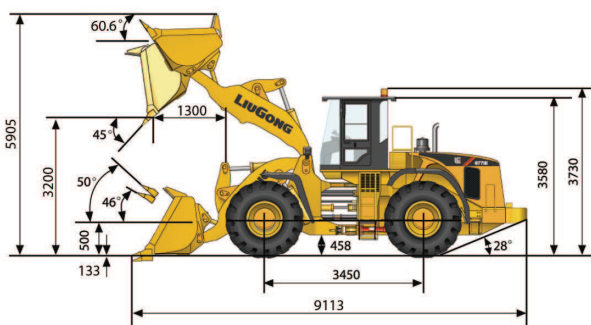
Tire Size	26.5 R 25
-----------	-----------

OPERATING WEIGHTS

Operating Weight	24,500 kg
------------------	-----------

SERVICE CAPACITIES

Fuel Tank	425 L
Engine Oil	38 L
Cooling System	41 L
Hydraulic Reservoir	250 L
Transmission and Torque Converter	62 L
Front Axle	45 L
Rear Axle	45 L



Unit: mm

Guangxi Liugong Machinery Co., Ltd.

No. 1 Liutai Road, Liuzhou, Guangxi 545007, PR China

T: +86 772 388 6124 E: overseas@liugong.com

www.liugong.com

09/2012 Designed by LiuGong

Specifications and designs are subject to change without notice. Machines shown may include optional equipment.

Courtesy of Machine.Market