



M T T 6 / C A T[®] 730

MAGNUM[™] 6,000 GALLON/ 22740 LITER WATER TANKER

Quality, performance and value you expect from the leader in the haulage equipment and water tank industry.



Photos may show optional equipment

Quality Through Comprehensive Design

MEGA CORP.[®]

700 Osuna Rd. NE • P.O. Box 26146 • Albuquerque, NM 87113

(505) 345-2661 • Fax (505) 345-6190 • www.megacorpinc.com

Manufacturers of Construction and Mining Equipment

MTT6_730_Rev02



STANDARD EQUIPMENT INCLUDES:

- Magnum™ Anti-Surge Stabilization System (M.A.S.S.).
- Structural center tunnel provides support for baffles.
- Internal shell controls side-to-side water flow and provides structural connection between baffles.
- A second floor in the front section of tank contains water in the lower area, controlling water flow and maintaining a low center of gravity.
- Three (3) reinforced transverse baffles limit fore/aft water flow; includes banded (reinforced) access ports.
- Rear spray bar with four (4) **patented** spray head valves.
- Externally mounted 850 GPM@50 PSI (3220 LPM@3.4 bar) water pump, with close-coupled hydraulic motor.
- Electric control console for individual operation of each spray head.
- Low profile tank design.
- 30 inch (76.2 cm) diameter fill port with trash screen and safety grate.
- Access ladder.
- Anti-skid (perforated metal) walkway from access ladder to fill port.
- Safety railings on top of tank.
- Running, tail and stop lights.
- Rust inhibitor coating on bottom quadrant of tank interior.
- Tank exterior sandblasted, primed and painted to customer specified color.
- Drive tire mud flaps.

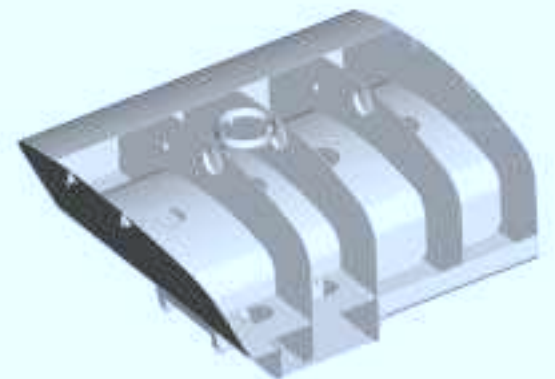
OPTIONAL EQUIPMENT AVAILABLE:

- High performance water pump 1500 GPM@100 PSI (5685 LPM@6.8 bar)
- Monitor (water cannon) with in-cab control. (Tank or tractor mounted available)
- Two (2) additional spray heads mounted on the front quadrant with individual cab controls for vertical side spray.
- Hose reels:
 - (A) 50 feet (15.24 m) of 1 inch (25.4 mm) or 1.5 inch (38.1 mm) with adjustable nozzle.
 - (B) 100 feet (30.48 m) of 1 inch (25.4 mm) or 1.5 inch (38.1 mm) with adjustable nozzle.
- Intermittent spray package - automatic system for alternate wet strip/dry strip watering of haul road for extended range and safety.
- Water level gauge in operator compartment.
- Sight gauge type water level indicator.
- Complete interior of tank sandblasted and coated with amine cure epoxy.
- 3 inch (76.2 mm) ground level fill.
- Suction loading system - Utilizes a hydraulically driven 4" (101 cm) inlet/outlet suction pump capable of loading unit at approximately 550 GPM (2085 LPM).
- Foam injection (fire fighting) system.
- Additional paint schemes to customer specifications.
- Customized options available upon request.

Patent #4167247



Patented Magnum™ Spray Head



Patented Magnum™ Anti-Surge Stabilization System (M.A.S.S.)
M.A.S.S. design may vary from graphic depending on chassis.

Specifications and options subject to change