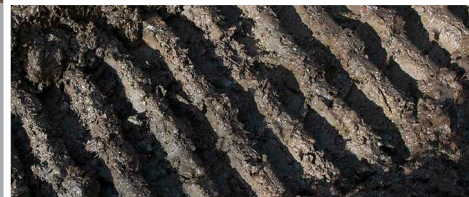




PANTHER T22

GOES WHERE YOU WORK &
WORKS WHERE YOU GO



Pinoth

Courtesy of Machine.Market

DIMENSIONS

Overall length (basic vehicle)	9,083 mm (357.6 in)
Overall width (without mirrors)	3,480 mm (137 in)
Overall height	3,176 mm (125 in)
Ground clearance	522 mm (20.5 in)
Shipping weight	16,960 kg (37,390 lb)
Shipping width (without tracks)	3,249 mm (127.9 in)

PERFORMANCE

Payload	20,865 kg (46,000 lb)
Maximum speed	9.5 km/h (5.9 mph)
Fording depth	1,295 mm (51 in)
Turning radius	0 m (0 in)
Ground pressure @ 150 mm (6 in) penetration	
Basic vehicle	138 g/cm ² (1.97 psi)
Loaded vehicle	257 g/cm ² (4.39 psi)
Maximum gradeability	
Uphill/downhill	60% (31°)
Sidehill	40% (21°)

ENGINE

Make	Caterpillar
Model	C9.3 Acert
Type	Turbo diesel, electronic fuel system
Emission standard	EPA Tier 4 Final EU Stage IV
Clean emission module	DOC, DPF and SCR
Regeneration	Active, no performance lost
Number of cylinders	6 cylinders in line
Displacement	9.3 L (567.5 in ³)
Horsepower @ 2,200 RPM	261 kW (350 HP)
Torque @ 1,400 RPM	1,595 N·m (1,177 lb·ft)
Fuel tank capacity	450 L (118.9 US gal)
DEF tank capacity	27 L (7.1 US gal)

CONTROLS

Type	Microprocessor with color display
Inputs	Steering wheel, Forward-Neutral-Reverse switch and progressive speed pedal and throttle
Outputs	Independent control of each track
Other features	Anti-stall and auto-calibration

ELECTRICAL SYSTEM

Voltage	12 V
Alternator capacity	150 A
Battery capacity	2 x 1,150 CCA
Battery type	AGM

UNDERCARRIAGE

Suspension type	Walking beam mounted on urethane bushing
Wheel quantity	10
Wheel type	Solid
Wheel dimension	221 mm X 920 mm (8.7 in X 36.2 in)

TRACKS

Type	D-dent, hardened steel
Width	1,105 mm (43.5 in)
Belt	Rubber, 7 plies
Tensioner	Grease-filled cylinder

CAB (STANDARD)

1 person cabin
Three-point seat belt
Parking brake linked with operator seatbelt
Lockable door
Adjustable operator seat with suspension
Four halogen front lights
One halogen rear light
Dome light
Front wiper with intermittent, low and high speed
Rear wiper with low, high speed
Front and rear windshield washer
Two 12 V power outlets
Fire extinguisher
Coat hanger
Front and side windows emergency exits

PROVISION FOR EXTRA HYDRAULIC PUMP

Available flange and shaft types	SAE C 14t / 12-24 DP SAE B 13t - 15t / 16-32 DP SAE A 9t-11t / 16-32 DP
Direction of rotation	CCW (when looking at pump shaft)
Max. rotational speed	3,080 RPM

STANDARD EQUIPMENT

ROPS ISO 3471
Lockable fuel cap
Pressurized hydrostatic oil tank
D-rings for transportation (4x)
Electronic programmable inclinometer with indication in the display
Back-up alarm
Electric horn
Operating and Maintenance manual
Spare Parts catalog (on USB flash drive)

OPTIONAL EQUIPMENT

FOPS ISO 3449
Brushguard
Amber beacon light with protector
Remote controlled directional spotlight
Air conditioning cab with adjustable temperature, fan control and fresh air intake
Engine coolant heater ESPAR
Maintenance kit, 500 hours or 2,000 hours include all filters for air/fuel/hydrostatic
Radio CD AM/FM with two speakers (world edition)
Two exterior mirrors (heated available)
Rear pintle hook (up to 30,000 lb capacity)
First aid kit
Emergency driving system
PTO clutch
Front winch
Engine block and hydraulic oil heaters

