

Reliability in Action

Wheeled Loader LG958L



Courtesy of Machine.Market

Wheeled Loader LG958L



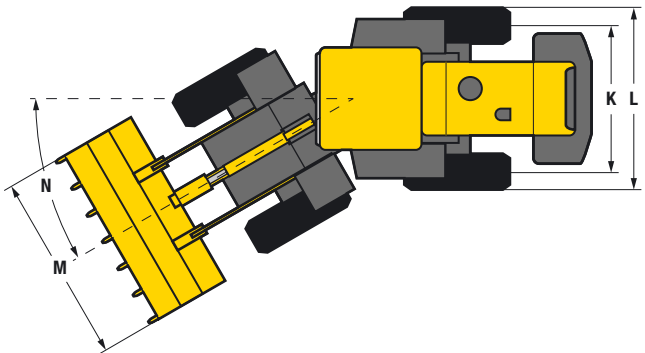
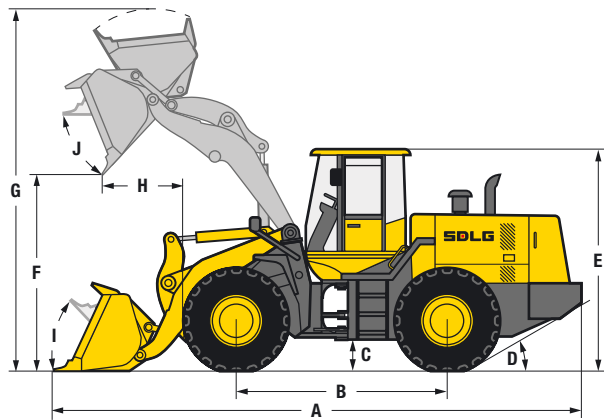
LG958L

Reliability, high performing equipment and leading fuel efficiency all combine to make the 16.6 tonne LG958L an excellent choice for productivity and uptime in all environments. The LG958L offers superb traction, excellent breakout force and a rigid structure. All SDLG wheeled loader models are rigorously tested to ensure reliability in action.

- The box structure frame of the LG958L gives best-in-class robustness.
- The access panels on the rear of the machine swing outwards to make daily checks and maintenance much easier.
- Single joystick operation of loader arm and bucket for easy and comfortable operation.

There is a wide range of attachments available for the LG958L including:

- Different size standard buckets
- Side tip bucket
- Multi-function bucket (4-in-1)
- Pallet forks
- Log grapples
- Snow blade



Description	Specification
Operating weight	16 600 kg
Standard bucket capacity	3 m³
Lift capacity (rated load)	5 000 kg
Static tipping load at full turn	11 224 kg
Maximum breakout force	168 kN

Dimensions	
A. Overall length	8 040 mm
B. Wheel base	3 200 mm
C. Ground clearance	457 mm
D. Approach angle back	30°
E. Overall height	3 382 mm
F. Dump height	3 120 mm
G. Overall operating height	5 493 mm
H. Dump reach	1 130 mm
I. Roll back angle ground level	50°
J. Roll back level full height	63°
K. Track width	2 190 mm
L. Machine width	2 785 mm
M. Bucket width	3 024 mm
N. Steering angle	38°

Engine	
Model	Weichai WD10G220E21
Type	Watercooled, 4 stroke, 6 cylinders in line, direct injection, turbo charged
Rated power (SAE J1349)	162 kW @ 2 200 rpm
Maximum torque	860 Nm
Cylinder bore stroke	126 / 130 mm

Description	Specification	
Transmission		
Type	Countershaft-type, electro-hydraulic shift	
Number of gears	4 forward, 3 reverse	
Maximum travel speed	Forward	38 km/h
	Reverse	23 km/h
Drive type	4 wheel drive	
Tyre dimension	23.5 - 25	
Tyre pressure	Front	55-58 psi
	Rear	46-49 psi
Service brake type	Dry disc brake	
Parking brake	Air operated internal expansion	

Service fill capacities	
Fuel	300 L
Hydraulic oil	210 L
Axles (main and final drives)	2 × 32 L
Engine	19 L
Transmission	35 L
Brake system	4 L
Hydraulics	
Type	Single lever hydraulic pilot control
Boom lift time	6.4 sec
Total cycle time	11.3 sec



SDLG machines are built to be like the people that own them: hardworking, genuine and reliable. Cost effective, robust machines with fuel efficient engines that are easy to operate and easy to maintain.

Everything about SDLG is designed to give you the confidence that you can complete the job to a high standard and on schedule. And when you need parts or service, you can trust your SDLG dealer to deliver on our promise.

When you buy SDLG, you're buying reliability: **Reliability in Action.**



www.sdlg.com