

**Reliability in Action**

# **Wheeled Loader L968F**



*Courtesy of Machine.Market*

# Wheeled Loader L968F



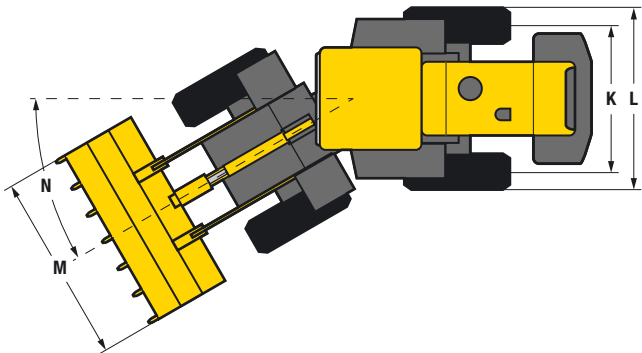
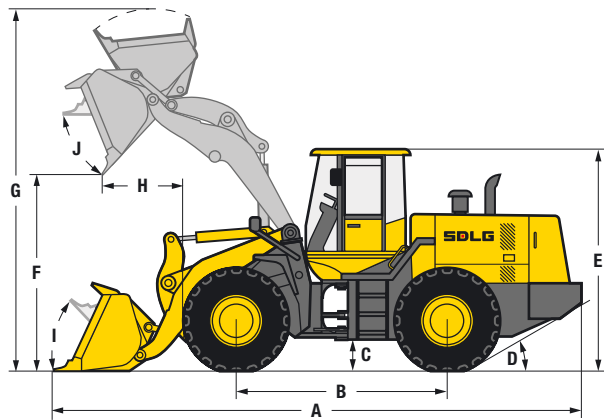
## L968F

The new F-series wheeled loaders from SDLG offer high performance and reliability, backed up by a world-class support network.

The L968F comes with a modern design and many improvements, for a machine that really delivers. With its 3.5 m³ bucket, this loader is engineered for high productivity and will give you an excellent return on your investment. All SDLG wheeled loaders are rigorously tested to ensure reliability in action.

- The design of the L968F ensures that service and maintenance is easily handled, with excellent accessibility throughout the machine.
- The single joystick guarantees precise, easy and comfortable operation of the loader arm and bucket, reducing operator fatigue.

- 1** High breakout force, a rated load of 6000 kg and a new 3.5 m³ bucket design for improved efficiency and productivity. A wide range of available attachments ensures the machine's versatility.
- 2** A 178 kW, 6 cylinder Weichai engine matched to a new SDLG transmission delivers maximum torque from the engine to the wheels.
- 3** Larger cab with 20 % more glazing for improved visibility, safety and efficiency. Superior air conditioning for greater operator comfort.
- 4** Optimised maintenance intervals now offer even better machine availability. The superb SDLG dealer network is there to support all your maintenance and repair needs.



Description	Specification
Operating weight	19 610 kg
Standard bucket capacity	3.5 m³
Lift capacity (rated load)	6 000 kg
Maximum breakout force	210 kN
Dimensions	
A. Overall length	8 680 mm
B. Wheel base	3 400 mm
C. Ground clearance	530 mm
D. Approach angle back	30°
E. Overall height	3 410 mm
F. Dump height	3 200 mm
G. Overall operating height	5 850 mm
H. Dump reach	1 140 mm
I. Roll back angle ground level	49°
J. Roll back level full height	45°
K. Track width	2 250 mm
L. Machine width	2 845 mm
M. Bucket width	3 038 mm
N. Steering angle	38°
Engine	
Model	Weichai WD10G240E202
Type	Watercooled, 4 stroke, 6 cylinders in line, direct injection, turbo charged
Rated power (SAE J1349)	178 kW @ 2 100 rpm
Maximum torque	1 000 Nm
Cylinder bore stroke	126 / 130 mm

Description	Specification
Transmission	
Type	SDLG VRT200, fixed shaft electric-hydraulic shift
Number of gears	4 forward, 4 reverse
Maximum travel speed	Forward 38 km/h Reverse 38 km/h
Drive type	4 wheel drive
Tyre dimension	23.5 - 25
Tyre pressure	Front 55 - 58 psi Rear 46 - 49 psi
Service brake type	Air over hydraulic dry disc brake
Parking brake	Electric pneumatic caliper
Service fill capacities	
Fuel	350 L
Hydraulic oil	250 L
Axles (main and final drives)	2 × 40 L
Engine	20 L
Transmission	21.8 L
Brake system	4 L
Hydraulics	
Type	Gear pump
Boom lift time	5.8 sec
Total cycle time	11.2 sec



**SDLG machines** are built to be like the people that own them: hardworking, genuine and reliable. Cost effective, robust machines with fuel efficient engines that are easy to operate and easy to maintain.

Everything about SDLG is designed to give you the confidence that you can complete the job to a high standard and on schedule. And when you need parts or service, you can trust your SDLG dealer to deliver on our promise.

When you buy SDLG, you're buying reliability: **Reliability in Action.**



[www.sdlg.com](http://www.sdlg.com)