

**Reliability in Action**

# **Wheeled Loader LG978**



*Courtesy of Machine.Market*

# Wheeled Loader LG978



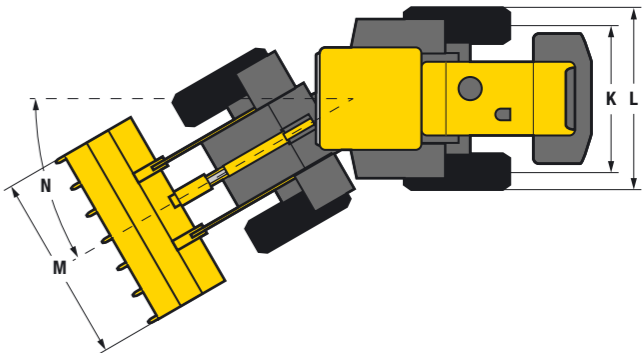
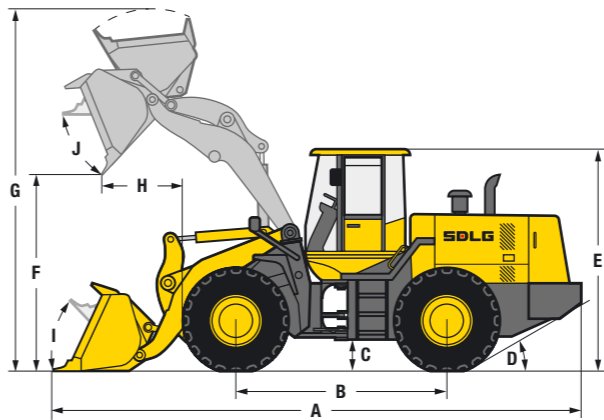
## LG978

The 23.5 tonne LG978 is an excellent choice for re-handling or light quarry applications. The robust front and rear frame are optimised to handle the highly intense work performed by a machine of this size.

- The combination of Weichai engine and SDLG transmission results in a reliable and efficient machine.
- The new box-structure at the front and rear of the frame is optimised to handle the highest intensity work load.
- The LG978 features a fully enclosed cab with excellent visibility and comfort, delivering the highest levels of safety and efficiency for the operator.

The LG978 comes equipped with a standard 4.2 m³ bucket. There is also a range of other options and attachments:

- Different size buckets
- Grapples
- Pallet forks



Description	Specification
Operating weight	23 500 kg
Standard bucket capacity	4.2 m³
Lift capacity (rated load)	7 000 kg
Static tipping load at full turn	14 796 kg
Maximum breakout force	216 kN
Dimensions	
A. Overall length	8 832 mm
B. Wheel base	3 100 mm
C. Ground clearance	506 mm
D. Approach angle back	25°
E. Overall height	3 665 mm
F. Dump height	3 250 mm
G. Overall operating height	5 776 mm
H. Dump reach	1 240 mm
I. Roll back angle ground level	45°
J. Roll back level full height	45°
K. Track width	2 300 mm
L. Machine width	3 045 mm
M. Bucket width	3 200 mm
N. Steering angle	37°
Engine	
Model	Weichai WD12G310E221
Type	Watercooled, 4 stroke, 6 cylinders in line, direct injection, turbo charged
Rated power (SAE J1349)	226 kW @ 2 100 rpm
Maximum torque	1 350 Nm
Cylinder bore stroke	126 / 155 mm

Description	Specification		
Transmission			
Type	Countershaft, electro-hydraulic shift		
Number of gears	4 forward, 4 reverse		
Maximum travel speed	Forward	36 km/h	
	Reverse	24.8 km/h	
Drive type	4 wheel drive		
Tyre dimension	26.5 / 26.7 - 29		
Tyre pressure	Front	50 psi	
	Rear	39 psi	
Service brake type	Dry disc brake		
Parking brake	Pressure release type clamp plate brake		
Service fill capacities			
Fuel	360 L		
Hydraulic oil	230 L		
Axles (main and final drives)	Front	44 L	
	Rear	37 L	
Engine	24 L		
Transmission	45 L		
Brake system	4 L		
Hydraulics			
Type	Single lever hydraulic pilot control		
Boom lift time	6.3 sec		
Total cycle time	11.7 sec		



**SDLG machines** are built to be like the people that own them: hardworking, genuine and reliable. Cost effective, robust machines with fuel efficient engines that are easy to operate and easy to maintain.

Everything about SDLG is designed to give you the confidence that you can complete the job to a high standard and on schedule. And when you need parts or service, you can trust your SDLG dealer to deliver on our promise.

When you buy SDLG, you're buying reliability: **Reliability in Action.**



[www.sdlg.com](http://www.sdlg.com)