

Reliability in Action

Wheeled Loader L956F



Courtesy of Machine.Market

Wheeled Loader L956F



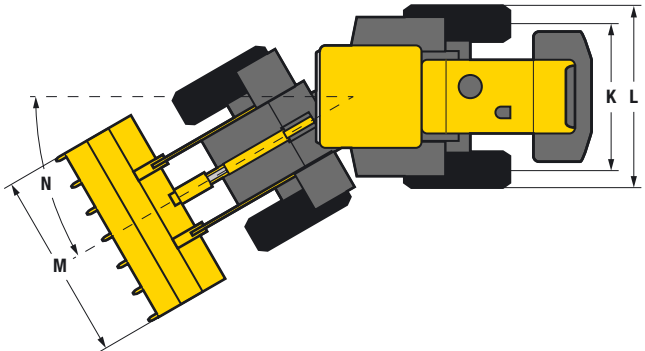
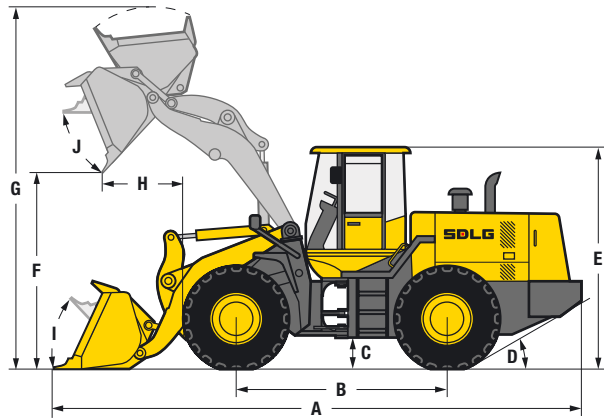
L956F

The new F-series wheeled loaders from SDLG offer high performance and reliability, backed up by a world-class support network.

The L956F comes with a modern design and many improvements, for a machine that really delivers. With its 2.8m³ bucket, this loader is engineered for high productivity and will give you an excellent return on your investment. All SDLG wheeled loaders are rigorously tested to ensure reliability in action.

- The design of the L956F ensures that service and maintenance is easily handled, with excellent accessibility throughout the machine.
- The single joystick guarantees precise, easy and comfortable operation of the loader arm and bucket, reducing operator fatigue.

- 1** High breakout force and a new 3.0m³ bucket design for improved efficiency and easy operation. A wide range of available attachments ensures the machine’s versatility.
- 2** A 162 kW, 6 cylinder Weichai engine matched to an updated SDLG transmission delivers maximum torque from the engine to the wheels.
- 3** Larger cab with 20 % more glazing for improved visibility, safety and efficiency. Superior air conditioning for greater operator comfort.
- 4** Optimised maintenance intervals now offer even better machine availability. The superb SDLG dealer network is there to support all your maintenance and repair needs.



Description	Specification
Operating weight	17 450 kg
Standard bucket capacity	3.0 m³
Lift capacity (rated load)	5 000 kg
Maximum breakout force	175 kN
Dimensions	
A. Overall length	8 180 mm
B. Wheel base	3 200 mm
C. Ground clearance	534 mm
D. Approach angle back	30°
E. Overall height	3 423 mm
F. Dump height	3 040 mm
G. Overall operating height	5 435 mm
H. Dump reach	1 095 mm
I. Roll back angle ground level	49°
J. Roll back level full height	45°
K. Track width	2 250 mm
L. Machine width	2 845 mm
M. Bucket width	3 024 mm
N. Steering angle	35°
Engine	
Model	Weichai WD10G220E23
Type	Watercooled, 4 stroke, 6 cylinders in line, direct injection, turbo charged
Rated power (SAE J1349)	162 kW @ 2 000 rpm
Maximum torque	980 Nm
Cylinder bore stroke	126 / 130 mm

Description	Specification
Transmission	
Type	SDLG Planetary Powershift
Number of gears	2 forward, 1 reverse
Maximum travel speed	Forward 38 km/h Reverse 17 km/h
Drive type	4 wheel drive
Tyre dimension	23.5 - 25
Tyre pressure	Front 55 - 58 psi Rear 46 - 49 psi
Service brake type	Air over hydraulic dry disc brake
Parking brake	Electric pneumatic drum brake
Service fill capacities	
Fuel	260 L
Hydraulic oil	240 L
Axles (main and final drives)	2 × 26 L
Engine	20 L
Transmission	45 L
Brake system	4 L
Hydraulics	
Type	Gear pump
Boom lift time	5.7 sec
Total cycle time	10 sec



SDLG machines are built to be like the people that own them: hardworking, genuine and reliable. Cost effective, robust machines with fuel efficient engines that are easy to operate and easy to maintain.

Everything about SDLG is designed to give you the confidence that you can complete the job to a high standard and on schedule. And when you need parts or service, you can trust your SDLG dealer to deliver on our promise.

When you buy SDLG, you're buying reliability: **Reliability in Action.**



www.sdlg.com