

TECHNICAL DATA

S/N	Item	Parameters
Bscic parameters	Standard bucket capacity (SAE)	0.9m³
	Working mass	21300kg
	Engine model	Cummins 6BTAA5.9-C150
	Rated power	112kW/1950rpm
Key indicators	System pressure/lifting pressure	32.1/35MPa
	System flow	2x206L/min
	Digging force of arm	103kN
	Digging force of bucket	147kN
	Max.drawbar pull	192kN
Dimensions	Traveling speed	3.3/5.5 km/h
	Overall dimensions	9570mmx2800mmx2945mm (to the top of cab)
	Max. excavating radius	9835mm
Operating range	Max. excavating depth	6610mm
	Max. excavating height	9640mm

EXCAVATOR ZE210E

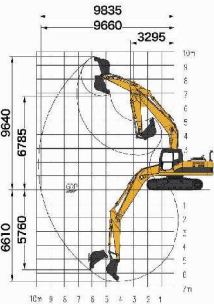
New high-rigidity cab and silicone oil damper with six supporting points, greatly reducing the cab vibration and making the operator more comfortable.

Intensified structural parts provided, fully making the complete machine more reliable.

Integrally-forged structure, ensuring higher strength and longer service life.

User-friendly design of body and structure, making maintenance more convenient and rapider.

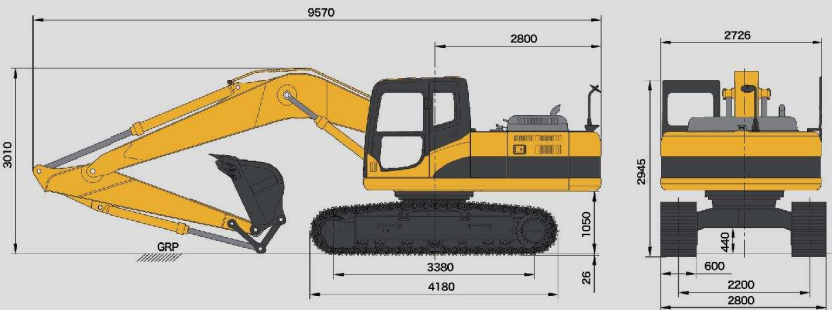
Cab structured with new reinforced beam, making the operator more comfortable with safer operation



EXCAVATOR



ZE210E



www.zoomlion.com